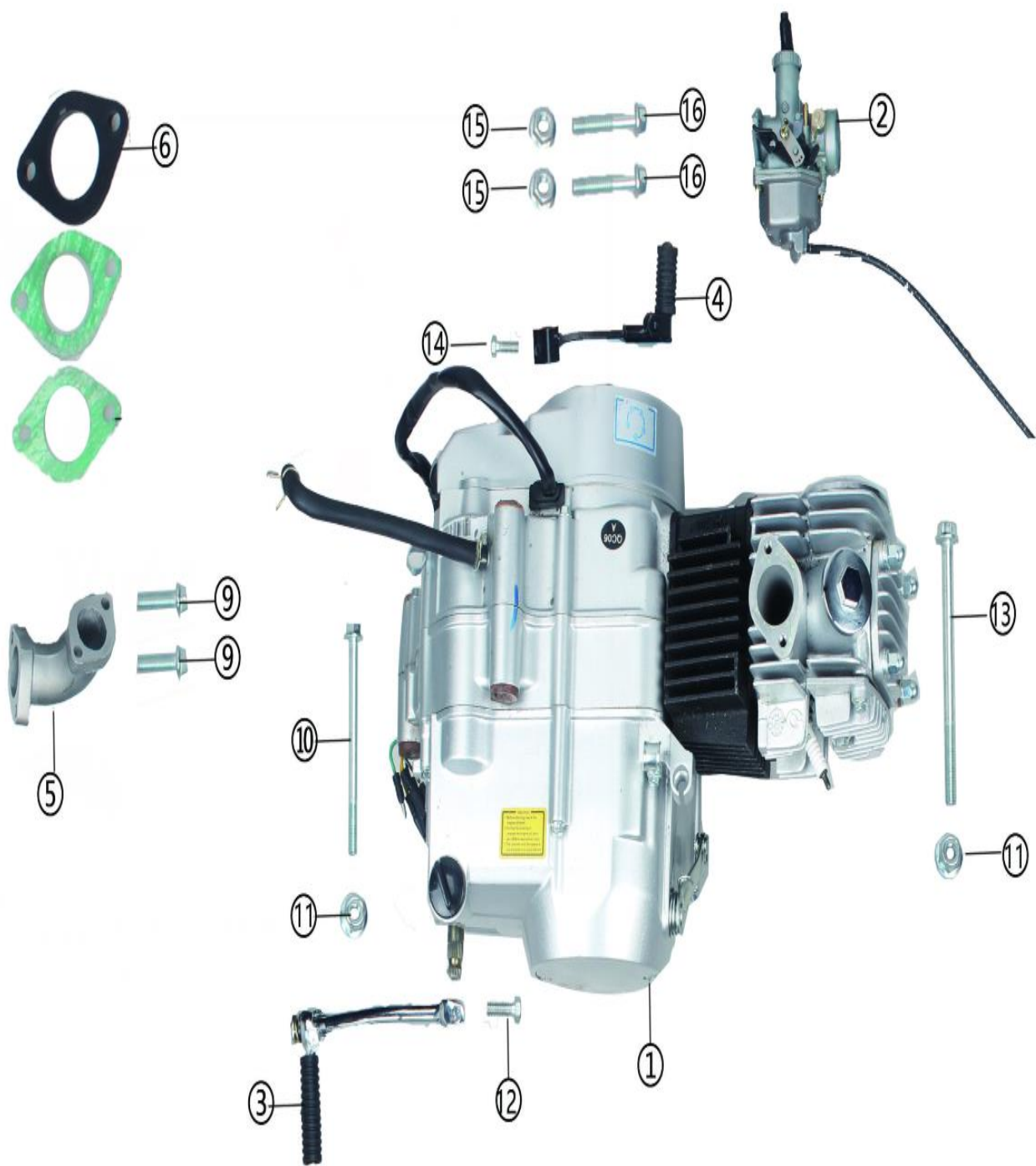


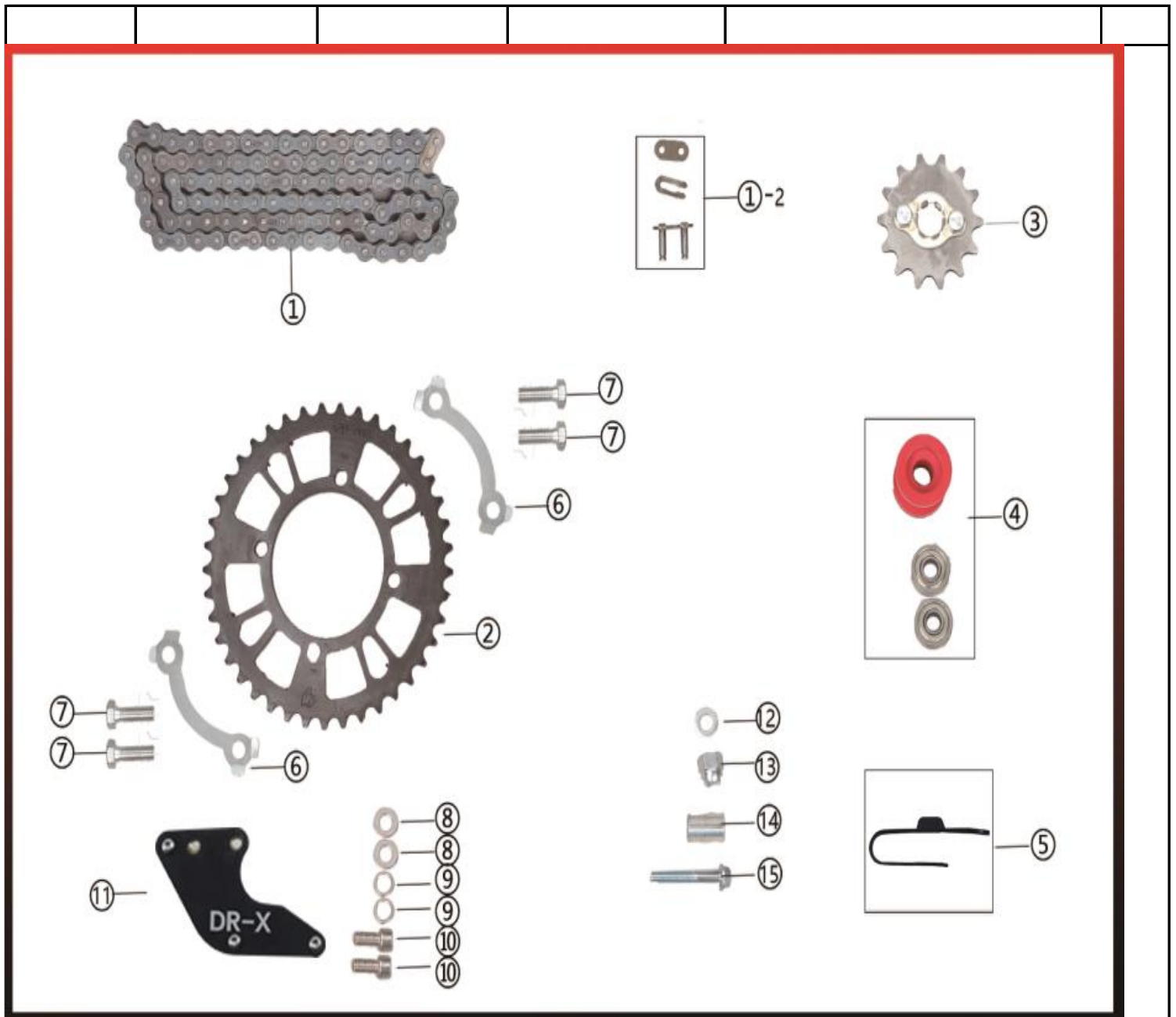
1、Suspension System

NO.	ICEBEAR PARTS NO.	FACTORY'S Part NO.	Description	Chinese name	QTY
①	PAD125-1-A-001	156010101L0	左前减震器	Up-side front suspenssion,Left	2
②	PAD125-1-A-002	156010101R0	右前减震器	Up-side front suspenssion,Right	2
③	PAD125-1-A-003	15601010200	后减震器	Rear shock	1
④	PAD125-1-A-004	GB5787M104501	六角法兰面螺栓	Rolt, flanged	1
⑤	PAD125-1-A-005	GB5787M10105501	六角法兰面螺栓	Rolt, flanged	1
⑥	PAD125-1-A-006	GBT6187M101201	六角法兰面锁紧螺母	Nut, flanged locking	2



2
N

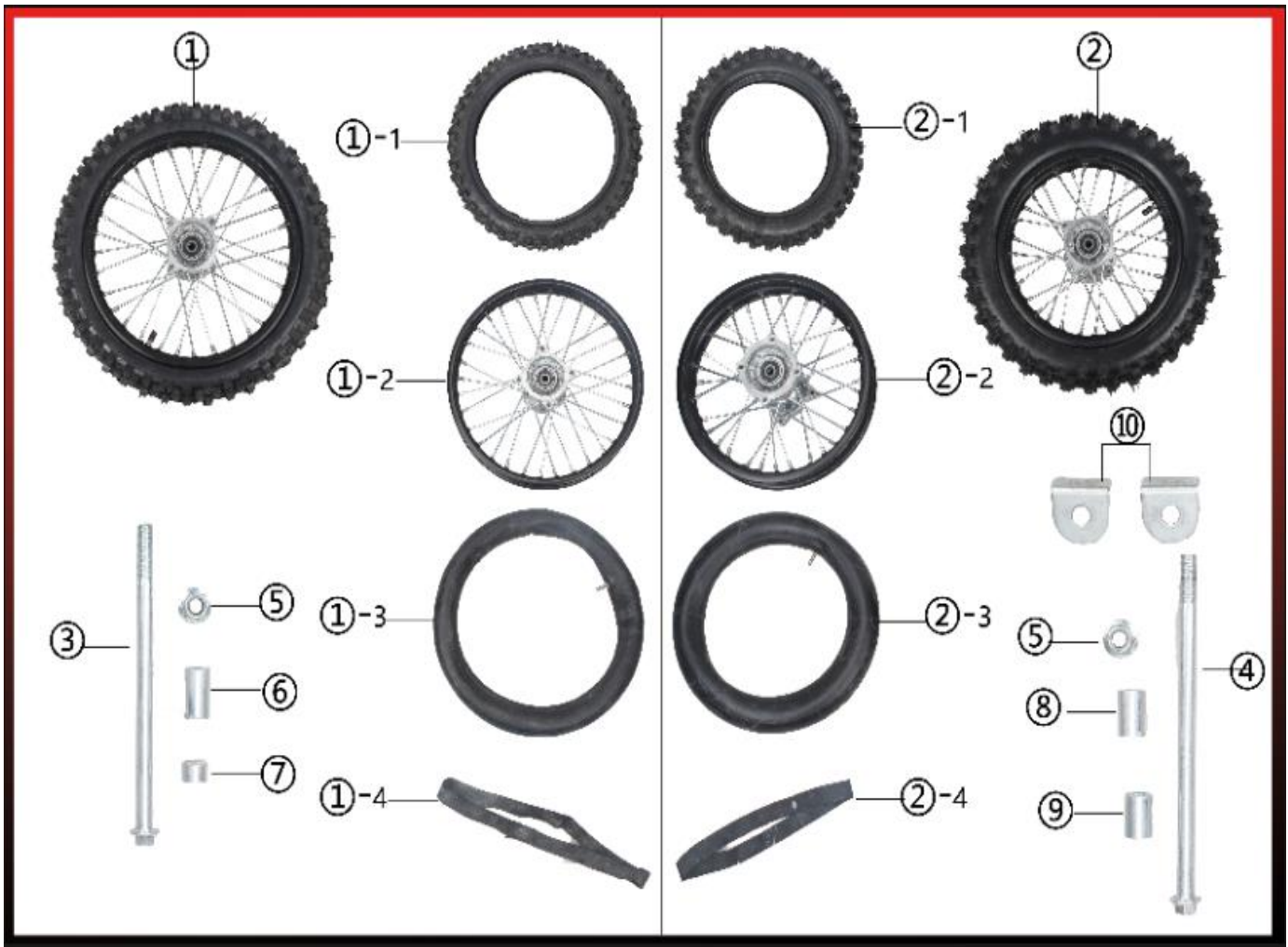
⑪	PAD125-1-B-009	GBT6187M801	六角法三面锁紧螺母	Nut, flanged locking	2
⑫	PAD125-1-B-010	GBT5782M62301	六角头螺栓	Bolt	1
⑬	PAD125-1-B-011	GB5787M811501	六角法兰面螺栓	Bolt flanged	1
⑭	PAD125-1-B-012	GBT5782M62001	六角头螺栓	Bolt	1
⑮	PAD125-1-B-013	GBT6177M601	六角法兰面自锁螺母	Nut, flanged locking	2
⑯	PAD125-1-B-014	GB5787M62801	六角法兰面螺栓	Bolt flanged	2



3、Transmission System

NO.	ICEBEAR PARTS NO.	FACTORY'S Part NO.	Description	Chinese name	QTY
①	PAD125-1-C-001	15603070000	链条总成	Chain assembly	1
①-2	PAD125-1-C-002	15603070200	连接片, 卡扣, 连接	Connctor	1
②	PAD125-1-C-003	15603010000	后链轮	Rear sprocket	1
③	PAD125-1-C-004	15603030000	小链轮组件	Minor spocket assembly	1
④	PAD125-1-C-005	15603040000	导链轮, 轴承	Chain roller assy	1
⑤	PAD125-1-C-006	15603040200	导链套	chain plate guide	1

⑥	PAD125-1-C-007	15603010100	链轮锁片	Spocket lock plates	2
⑦	PAD125-1-C-008	GBT5782M82501	六角头螺栓	Bolt	4
⑧	PAD125-1-C-009	GBT97.1801	平垫圈	Flat washer	2
⑨	PAD125-1-C-010	GBT93801	弹垫圈	Lock washer	2
⑩	PAD125-1-C-011	GBT70.1M82001	内六角螺栓	Bolt	2
⑪	PAD125-1-C-012	15603060000	挡链器	Chain guide	1
⑫	PAD125-1-C-013	15603080000	隔套	Spacer	1
⑬	PAD125-1-C-014	15603090000	球头螺母	Nut	1
⑭	PAD125-1-C-015	15603040100	导链轮衬套	Chain roller spacer	1
⑮	PAD125-1-C-016	GB5787M85501	六角法兰面螺栓	Bolt flanged	1



3、Transmission System Assembly

NO.	ICEBEAR PARTS NO.	FACTORY'S Part NO.	Description	Chinese name	QTY
①	PAD125-1-D-001	15603080000	前轮辋总成	Rim assy front	1
①-1	PAD125-1-D-002	15603080100	前轮外胎	Front tire	1
①-2	PAD125-1-D-003	15603080200	前轮辋	Front rim	1
①-3	PAD125-1-D-004	15603080300	前轮内胎	Front inner tube	1
①-4	PAD125-1-D-005	15603080400	衬带	Protector band	1

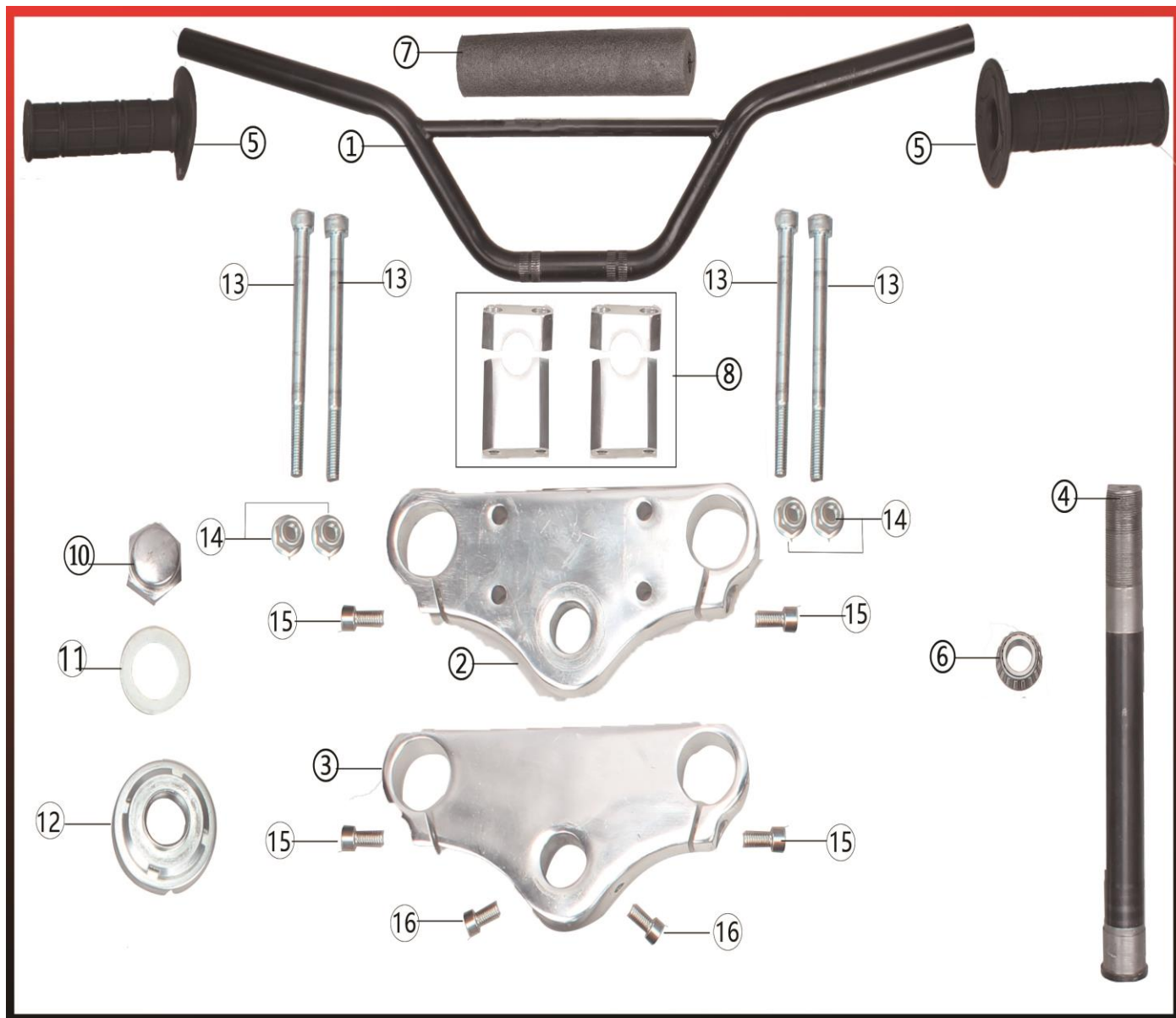
②	PAD125-1-D-006	15603090000	后轮辋总成	Rim assy. rear	1
②-1	PAD125-1-D-007	15603090100	后轮外胎	Rear tire	1
②-2	PAD125-1-D-008	15603090200	后轮辋	Rear rim	1
②-3	PAD125-1-D-009	15603090300	后轮内胎	Front inner tube	1
②-4	PAD125-1-D-010	15603090400	衬带	Protector band	1
③	PAD125-1-D-011	15603100000	前轮轴	Front axle	1
④	PAD125-1-D-012	15603110000	后轮轴	Rear axle	1
⑤	PAD125-1-D-013	GBT6187M1201	六角法兰面锁紧螺母	Nut flanged locking	1
⑥	PAD125-1-D-014	15603130000	前轮左轴套	Front axle spacer LH	1
⑦	PAD125-1-D-015	15603140000	前轮右轴套	Front axle spacer RH	1
⑧	PAD125-1-D-016	15603150000	后轮左轴套	Rear axle spacer LH	1
⑨	PAD125-1-D-017	15603160000	后轮右轴套	Rear axle spacer RH	1
⑩	PAD125-1-D-018	15603120000	调链片	Chain adjuster	2



4、 Fuel Supply System

NO.	ICEBEAR PARTS NO.	FACTORY'S Part NO.	Description	Chinese name	QTY
①	PAD125-1-E-001	15604010000	油箱	Fuel tank,Iron	1
②	PAD125-1-E-002	15604020000	油箱盖	Fuel tank cap	1
③	PAD125-1-E-003	15604030000	油箱开关带上下油管	Pet-cock fuel	1

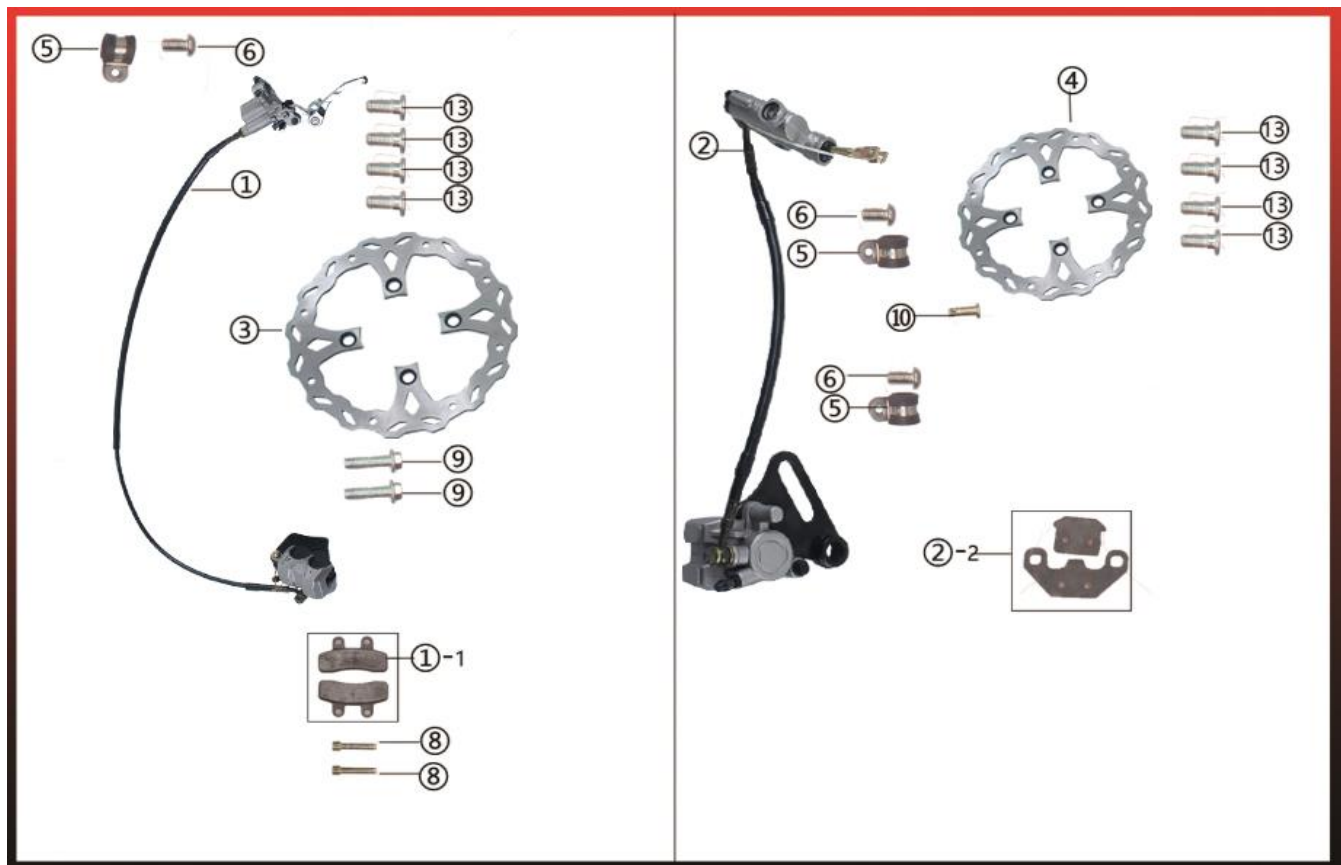
④	PAD125-1-E-004	15604040100	油滤带油管	Fuel hose	2
⑤	PAD125-1-E-005	GBT70.1M61601	内六角螺栓	Bolt	1
⑥	PAD125-1-E-006	GB5787M62001	六角法兰面螺栓	Bolt flanged	2
⑦	PAD125-1-E-007	15604010200	T型套	T-flanged spacer	2
⑧	PAD125-1-E-008	GBT70.1M61602	六角法兰面螺母	Nut	1



5、Steering System

NO.	ICEBEAR PARTS NO.	FACTORY'S Part NO.	Description	Chinese name	QTY
①	PAD125-1-F-001	15605080000	方向把	Handle bar	1
②	PAD125-1-F-002	15605010100	上连板	Top triple clamp	1

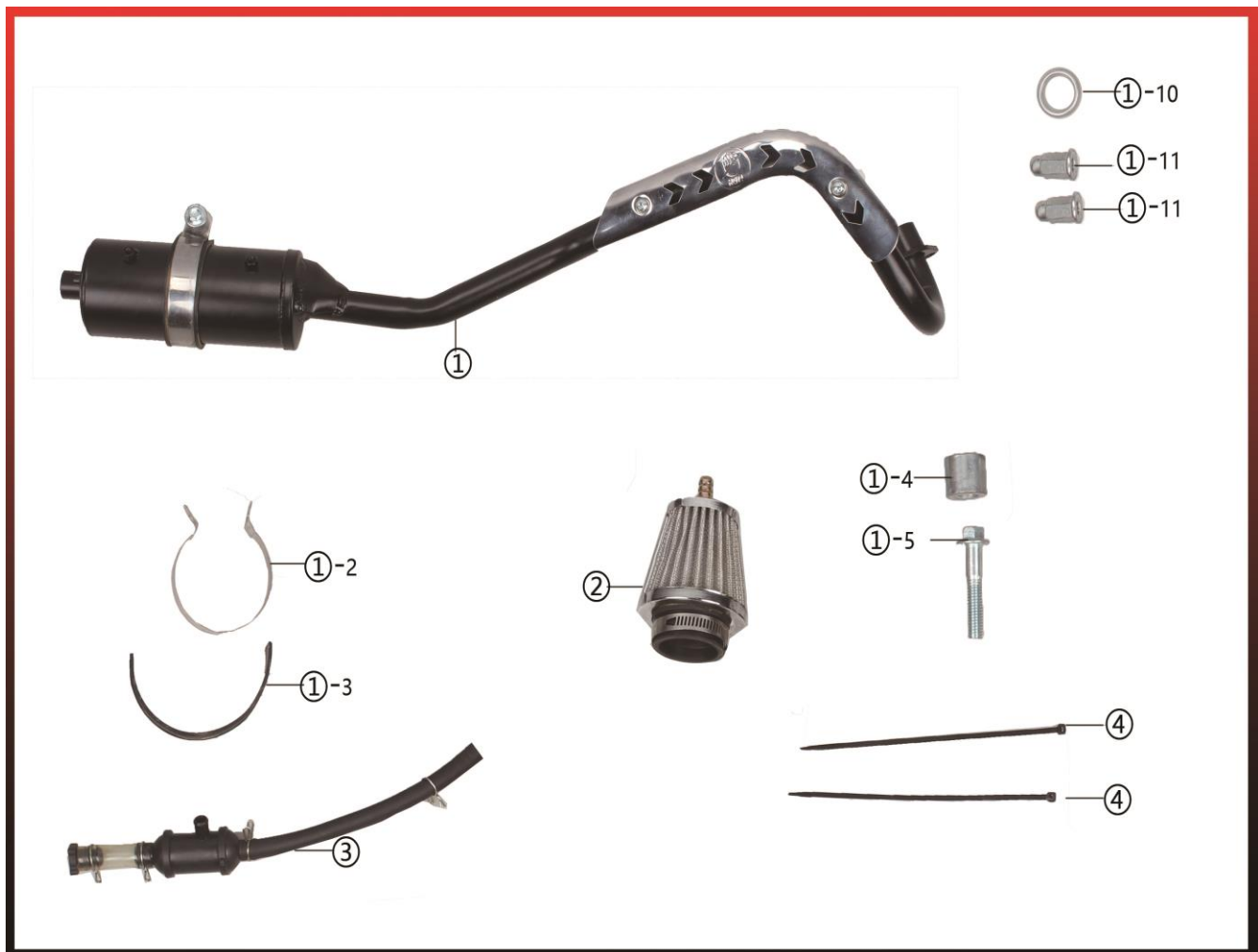
③	PAD125-1-F-003	15605010200	下联板	Bottom triple clamp	1
④	PAD125-1-F-004	15605050000	方向柱	Steering stem	1
⑤	PAD125-1-F-005	156051300L0	左右把套	left & right hand grip	1
⑥	PAD125-1-F-006	15605210100	滚针轴承总成	Top needle bearing assy	1
⑦	PAD125-1-F-007	15605020000	方向把护胸	Foam padding	1
⑧	PAD125-1-F-008	15605170100	联板上下压块	Top & Bottom handle bar riser	2
⑩	PAD125-1-F-009	15605180000	盖母	Steering stem top nut	1
⑪	PAD125-1-F-010	15605190000	大平垫	Flat washer	1
⑫	PAD125-1-F-011	15905200000	锁母	lock nut	1
⑬	PAD125-1-F-012	GBT70.1M810401	内六角螺栓	Bolt	4
⑭	PAD125-1-F-013	GBT6187M801	六角法兰面锁紧螺母	Nut flanged locking	4
⑮	PAD125-1-F-014	GBT70.1M81701	内六角螺栓	Bolt	4
⑯	PAD125-1-F-015	GBT70.1M81501	内六角螺栓	Bolt	2



6、Braking System

NO.	ICEBEAR PARTS NO.	FACTORY'S Part NO.	Description	Chinese name	QTY
①	PAD125-1-H-001	15606010000	前碟刹总成	Brake assy with brake front	1

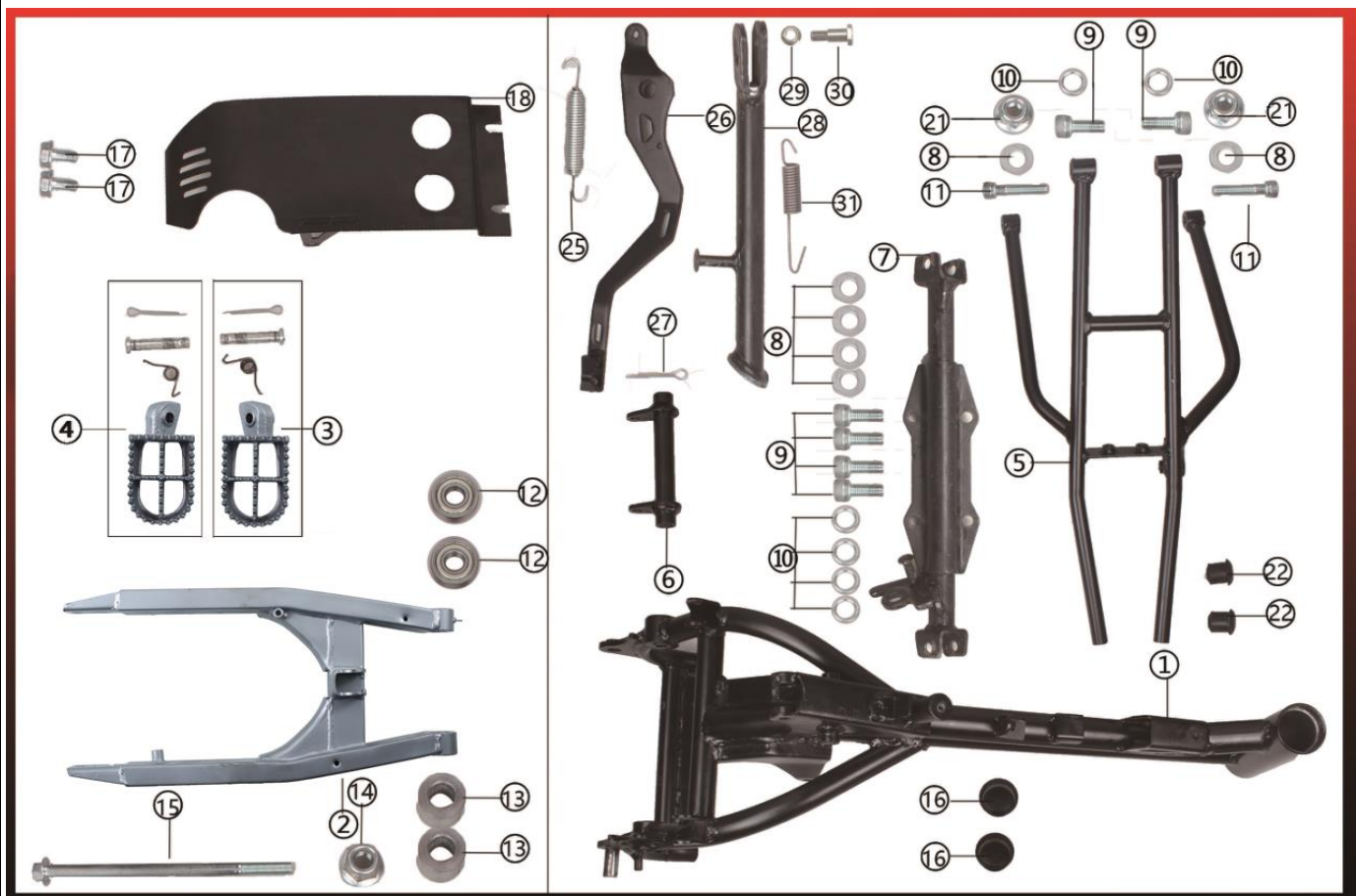
①-1	PAD125-1-H-002	15606010500	前碟刹蹄块总成	Brake pad assy front	1
②	PAD125-1-H-003	15606020000	后碟刹总成	Brake assy with brake rear	1
②-2	PAD125-1-H-004	15606020500	后碟刹蹄块总成	Brake pad assy rear	1
③	PAD125-1-H-005	15606010200	前碟刹盘	Front brake disc	1
④	PAD125-1-H-006	15606010300	后碟刹盘	Rear brake disc	1
⑤	PAD125-1-H-007	15606012700	油管卡	Clamp hose	3
⑥	PAD125-1-H-008	GBT70.1M61201	内六角盘头螺栓	Bolt	3
⑩	PAD125-1-H-009	15606040000	销轴	Pin rod	1
⑬	PAD125-1-H-010	15606070000	碟刹盘固定螺栓	Bolt	4



7、Intake & Exhaust System

NO.	ICEBEAR PARTS NO.	FACTORY'S Part NO.	Description	Chinese name	QTY
-----	-------------------	--------------------	-------------	--------------	-----

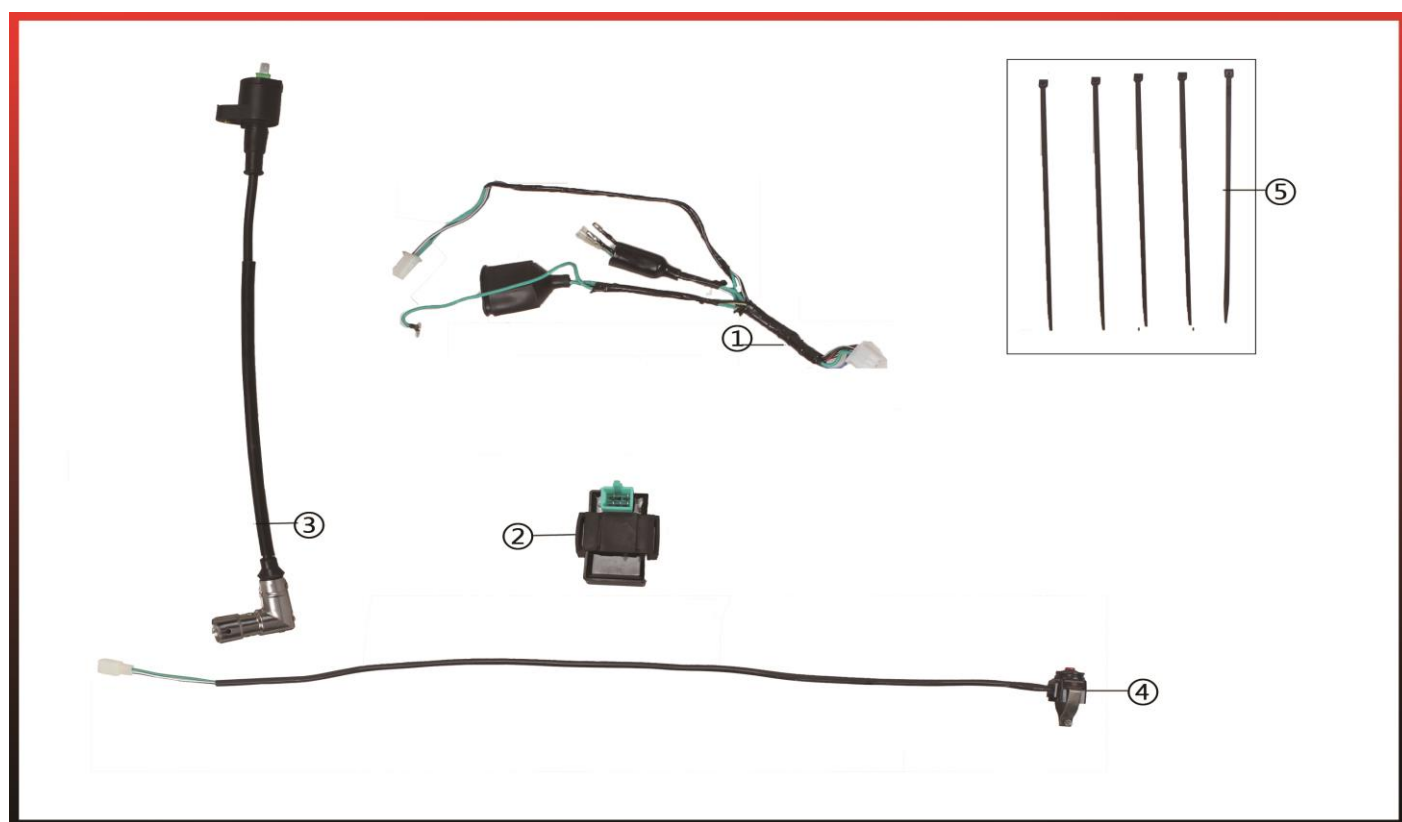
①	PAD125-1-I-001	15607010000	消音器总成	Exhaust assy	1
②	PAD125-1-I-002	15607020000	空滤器	Air filter	1
③	PAD125-1-I-003	15607020001	二次进气系统	secondary gulp valve	1
④	PAD125-1-I-004	15607100000	扎带	Strapping tape	2
①-2	PAD125-1-I-005	15607010800	消音器卡箍	Clamp	1
①-3	PAD125-1-I-006	15607010900	缓冲胶片	Breaker strip	1
①-4	PAD125-1-I-007	15607011000	隔套	Spacer	1
①-5	PAD125-1-I-008	GB5787M84001	六角法兰面螺栓	Bolt flanged	1
①-10	PAD125-1-I-009	15607011400	密封垫	Seal exhaust	1
①-11	PAD125-1-I-010	GBT923M601	高帽螺母	Muffler screws	2



8、Frame & Accessories

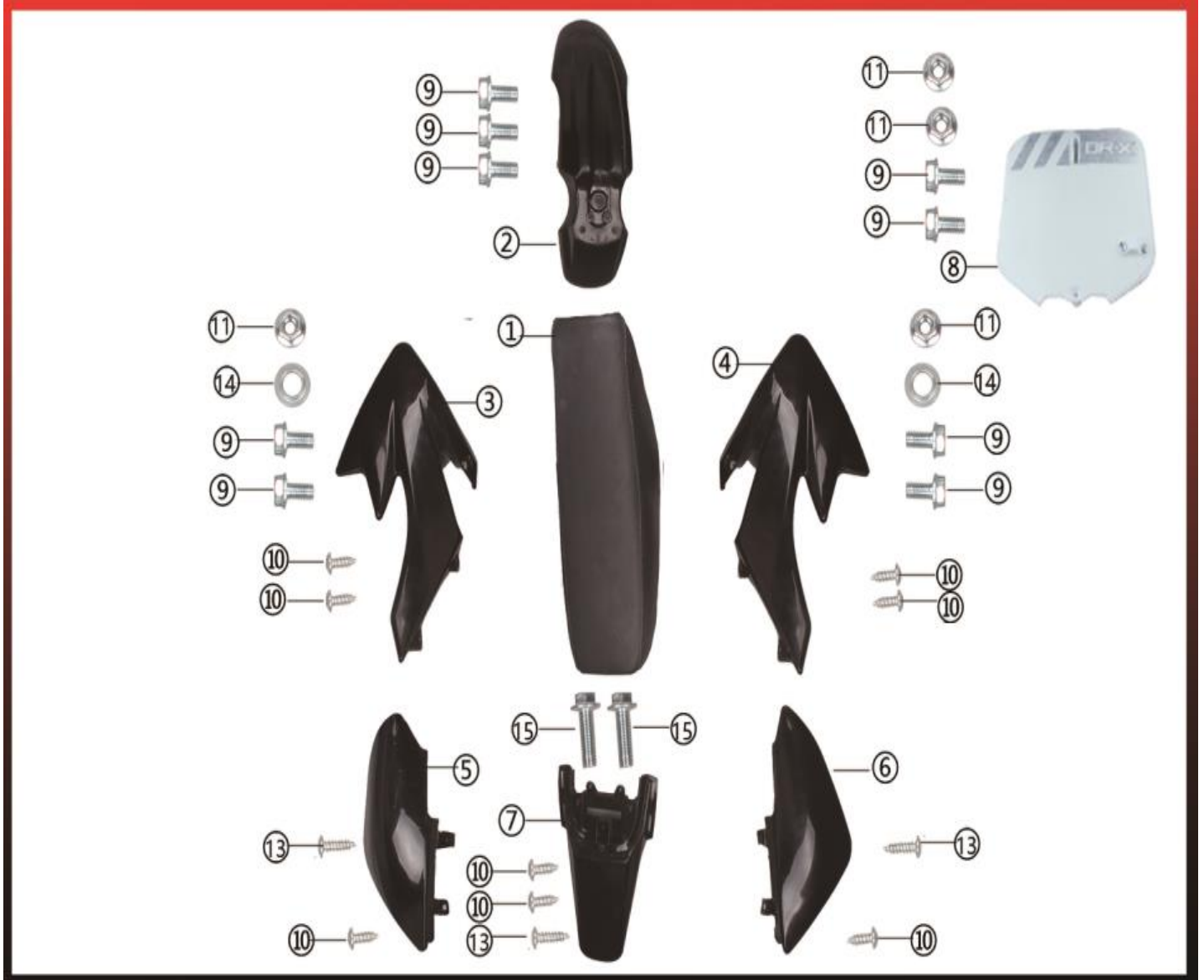
NO.	ICEBEAR PARTS NO.	FACTORY'S Part NO.	Description	Chinese name	QTY
①	PAD125-1-G-001	15608010000	主车架	Frame	1
②	PAD125-1-G-002	15608020000	后平叉	Swing arm	1

③	PAD125-1-G-003	156080300L0	左脚踏	Foot peg left	1
④	PAD125-1-G-004	156080300R0	右脚踏	Foot peg right	1
⑤	PAD125-1-G-005	15608050000	后浮梁	Tail bracket	1
⑥	PAD125-1-G-006	15608040000	发动机吊架	Engine mount bracket	1
⑦	PAD125-1-G-007	15608050000	搁脚架	Footrest support	1
⑧	PAD125-1-G-008	GBT97.1M801	平垫圈	Flat washer	6
⑨	PAD125-1-G-009	GBT70.1M84001	内六角螺栓	Bolt	2
⑩	PAD125-1-G-010	GBT93M801	弹垫圈	Lock washer	6
⑪	PAD125-1-G-011	GBT70.1M82001	内六角螺栓	Bolt	6
⑫	PAD125-1-G-012	15608080000	轴承	Bearing	2
⑬	PAD125-1-G-013	15608090000	隔套	Spacer	2
⑭	PAD125-1-G-014	GBT6187M1201	六角法兰面锁紧螺母	Nut flanged locking	1
⑮	PAD125-1-G-015	15608100000	平叉轴	Swingarm axle	1
⑯	PAD125-1-G-016	15608100100	平叉防尘盖	Swingarm dustproof	2
⑰	PAD125-1-G-017	GB578701	六角法兰面螺栓	Bolt flanged	2
⑱	PAD125-1-G-018	15608110000	发动机护板	Engine plate cover	1
㉑	PAD125-1-G-019	GBT6187M801	六角法兰面锁紧螺母	Nut flanged locking	2
㉒	PAD125-1-G-020	15608050100	后浮梁胶塞	Tail bracket rubber plug	2
㉕	PAD125-1-G-021	15608140000	刹车踏板回位簧	Main kick stand spring	1
㉖	PAD125-1-G-022	15608150000	刹车踏板	Brake pedal	1
㉗	PAD125-1-G-023	15608160000	开口销	Cotter pin	1
㉘	PAD125-1-G-024	15608170000	单撑	Single Stand	1



9、Electric System

NO.	ICEBEAR PARTS NO.	FACTORY'S Part NO.	Description	Chinese name	QTY
①	PAD125-1-K-001	15609010000	主电缆	Wiring harness	1
②	PAD125-1-K-002	15609020000	点火器	CDI assembly	1
③	PAD125-1-K-003	15609030000	点火线圈	Ignition coil assembly	1
④	PAD125-1-K-004	15609040000	熄火开关总成	Kill switch assembly	1
⑤	PAD125-1-K-005	15609050000	扎带	Strapping tape	5



10、Covering Parts

NO.	ICEBEAR PARTS NO.	FACTORY'S Part NO.	Description	Chinese name	QTY
①	PAD125-1-L-001	15610010000	坐垫	Seat	1

②	PAD125-1-L-002	15610020000	前泥板	Front fender	1
③	PAD125-1-L-003	15610030000	左前护板	Fairing fuel tank LH	1
④	PAD125-1-L-004	15610040000	右前护板	Fairing fuel tank RH	1
⑤	PAD125-1-L-005	15610050000	左后护板	Fairing fuel tank LH	1
⑥	PAD125-1-L-006	15610060000	右后护板	Fairing fuel tank RH	1
⑦	PAD125-1-L-007	15610070000	后护板	Rear fender	1
⑧	PAD125-1-L-008	15610080000	前面板	Number plate	1
⑨	PAD125-1-L-009	GB5787M61201	六角法兰面螺栓	Bolt flanged	9
⑩	PAD125-1-L-010	GBT845-19853801	十字盘头自攻螺钉	Bolt	8
⑪	PAD125-1-L-011	GBT6187M601	六角法兰面锁紧螺母	Nut flanged locking	4
⑬	PAD125-1-L-012	GBT845-198531201	十字盘头自攻螺钉	Bolt	2
⑭	PAD125-1-L-013	15610100000	T型套	T-flanged spacer	2



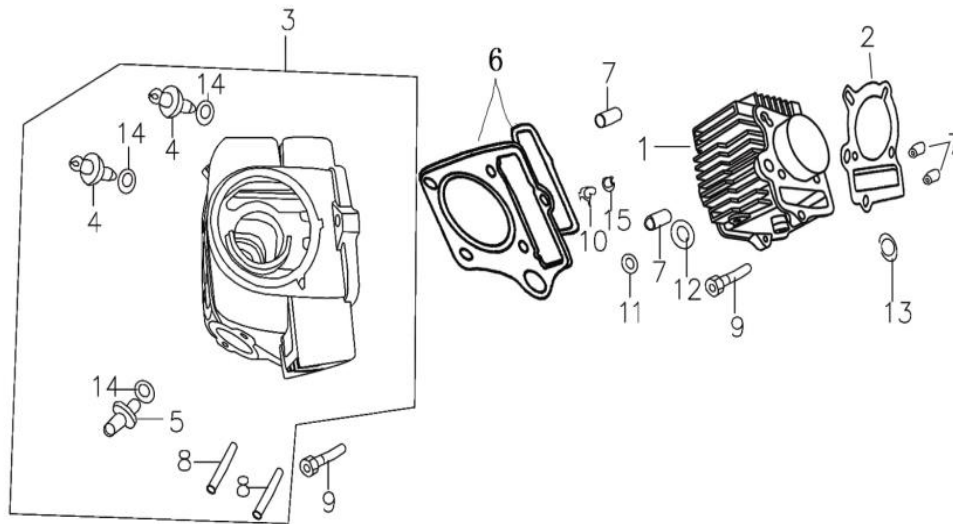
11、 Operation System

NO.	ICEBEAR PARTS NO.	FACTORY'S Part NO.	Description	Chinese name	QTY
①	PAD125-1-M-001	15611020000	离合器线	Clutch cable	1
②	PAD125-1-M-002	15611010000	油门线	Throttle cable	1
③	PAD125-1-M-003	15611010100	油门转把	Throttle base	1
④	PAD125-1-M-004	15611020100	离合手把	Clutch levers	1

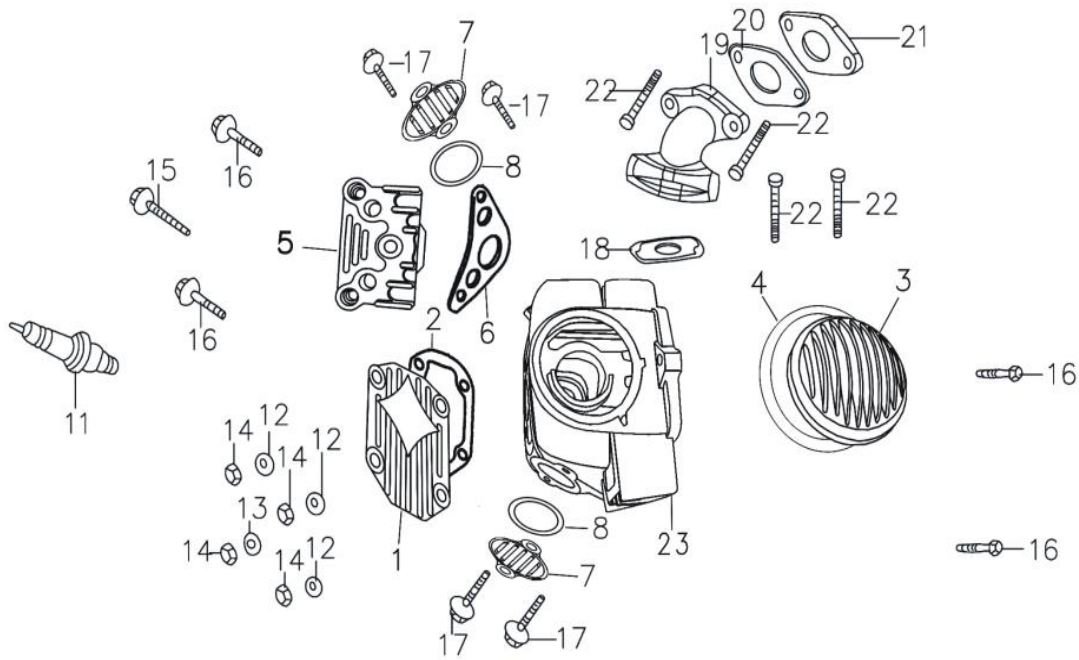


12、 Decals Kits

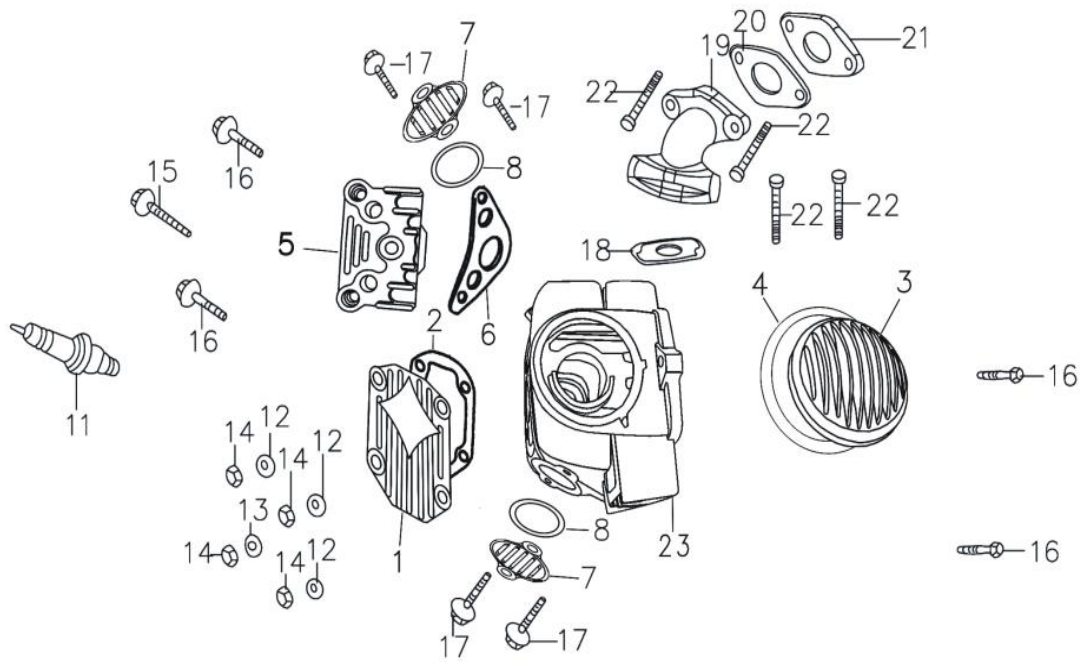
图号 Item No.	ERP 配件编号	中文名称 Chinese name	英文名称 English name	单车 数量 Unit
①	PAD125-1-N-001	SYC125 红色全套贴花	SYC-125 DR-X Red decals kits	1
②	PAD125-1-N-002	SYC125 绿色全套贴花	SYC-125 DR-X Green decals kits	1
③	PAD125-1-N-003	SYC125 蓝色全套贴花	SYC-125 DR-X Blue decals kits	1
④	PAD125-1-N-004	SYC125 黑色全套贴花	SYC-125 DR-X Black decals kits	1
E-1		气缸组件	CYLINDER ASSY	



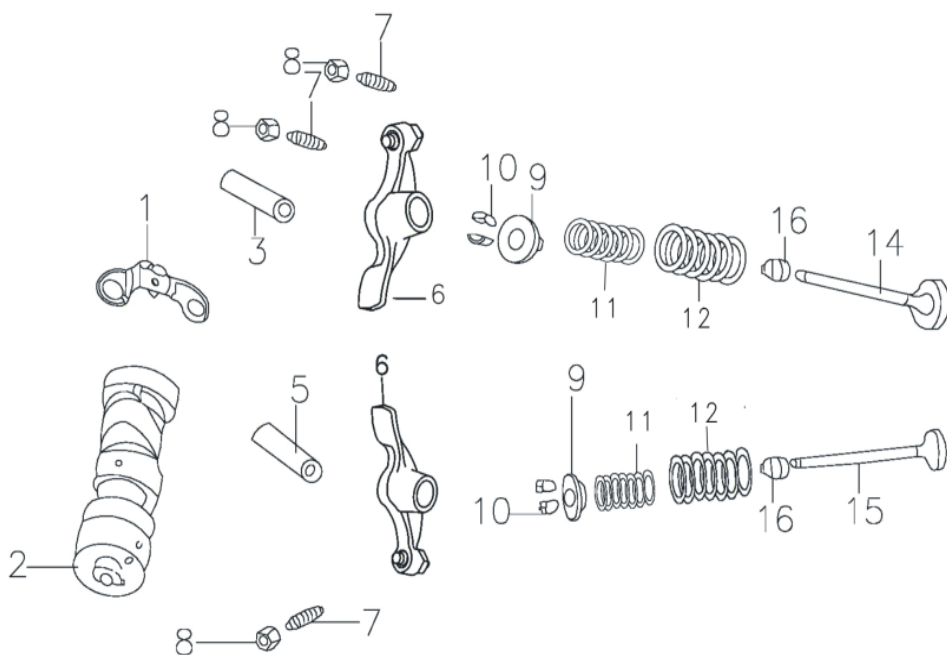
NO.	ICEBEAR PARTS NO.	FACTORY'S Part NO.	Description	Chinese name	QTY
1	PAD125-1-E-A-001	2067A038PW	气缸体/铸铁缸	CYLINDER BODY	1
2	PAD125-1-E-A-002	206B010	气缸体密封垫	CYLINDER BODY SEAL PACKING	1
3	PAD125-1-E-A-003	215A000	气缸头组件/带内部附	CYLINDER HEAD ASSY	1
	PAD125-1-E-A-004	215A000PW	气缸头组件/光缸头	CYLINDER HEAD ONLY	
6	PAD125-1-E-A-005	206B008	气缸头密封垫组件	CYLINDER HEAD SEAL GASKET	1
7	PAD125-1-E-A-006	97108012	定位销 8×12	ASSEMBLING PIN 8×12	4
12	PAD125-1-E-A-007	D00C031	矩形密封圈	RECTANGLE SEAL PING	1
13	PAD125-1-E-A-008	D00L033	矩形密封圈	RECTANGLE SEAL PING	1
E-2		气缸头	CYLINDER HEAD		



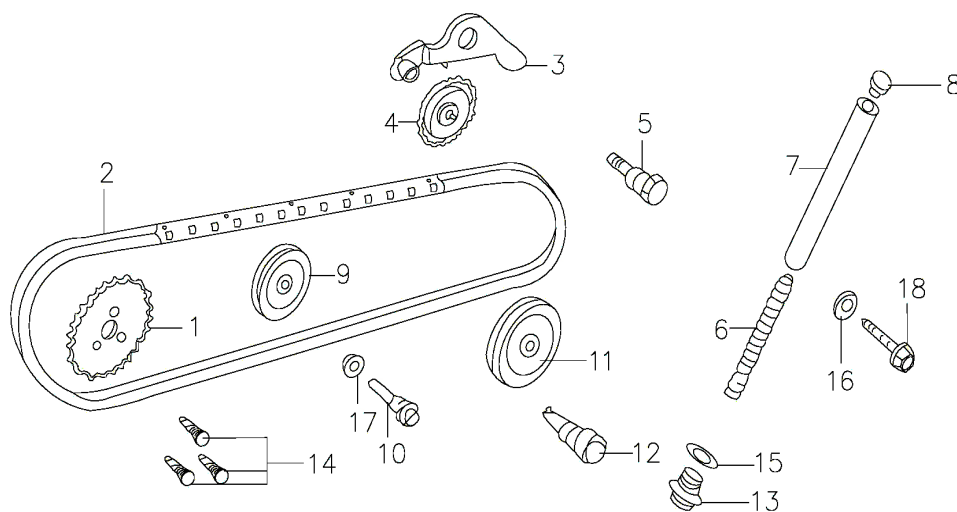
图号 Item No.	ERP 配件编号	中文名称 Chinese name	英文名称 English name	单车 数量 Unit
1	PAD125-1-E-B-001	206A036PW 气缸头盖	CYLINDER HEAD COVER	1
2	PAD125-1-E-B-002	206B009 气缸头盖密封垫	CYLINDER HEAD COVER SEAL PACKING	1
3	PAD125-1-E-B-003	E03A033PW 气缸头左盖/镀铬	CYLINDER HEAD LEFT COVER	1
4	PAD125-1-E-B-004	E03B006 气缸头左盖密封圈	CYLINDER HEAD LEFT COVER SEAL PACK	1
5	PAD125-1-E-B-005	E03A035PW 气缸头右盖	CYLINDER HEAD RIGHT COVER	1
6	PAD125-1-E-B-006	D00B007 气缸头右盖密封圈	CYLINDER HEAD RIGHT COVER SEAL RIN	1
7	PAD125-1-E-B-007	215A032PW 气门盖/镀铬	VALVE COVER	2
8	PAD125-1-E-B-008	D001C058 气门盖密封圈	SEAL FOR INTAKE VALVE	2
11	PAD125-1-E-B-009	D00D021 NGK普通火花塞不带电	NGK/SPARK PLUG	1
12	PAD125-1-E-B-010	E03L016 垫圈	CUSHION RING	3
13	PAD125-1-E-B-011	E03L156 垫圈	CUSHION RING	1
14	PAD125-1-E-B-012	923070000LBX 螺母	NUT	4
15	PAD125-1-E-B-013	GB578701 螺栓	BOLT	1
16	PAD125-1-E-B-014	GB7001 内六角螺栓	SCREW	4
E-2		气缸头 CYLINDER HEAD		



NO.	ICEBEAR PARTS NO.	FACTORY'S Part NO.	Description	Chinese name	QTY
17	PAD125-1-E-B-001	96006016LBX	带盘螺栓	PLATE BOLT	6
18	PAD125-1-E-B-002	D001B014	进气管密封垫	SEAL PACKING FOR THE INTAKE	1
19	PAD125-1-E-B-003	L00JQ214PW	进气管/YX02	INTAKE	1
20	PAD125-1-E-B-004	204B030	密封垫	SEAL PACKING	1
21	PAD125-1-E-B-005	204C039	隔热垫	CARBURETOR SEAL PACKING	1
22	PAD125-1-E-B-006	96006025LBX	带盘螺栓	PLATE BOLT	4
E-3		凸轮轴总成	CAMSHAFT ASSY		

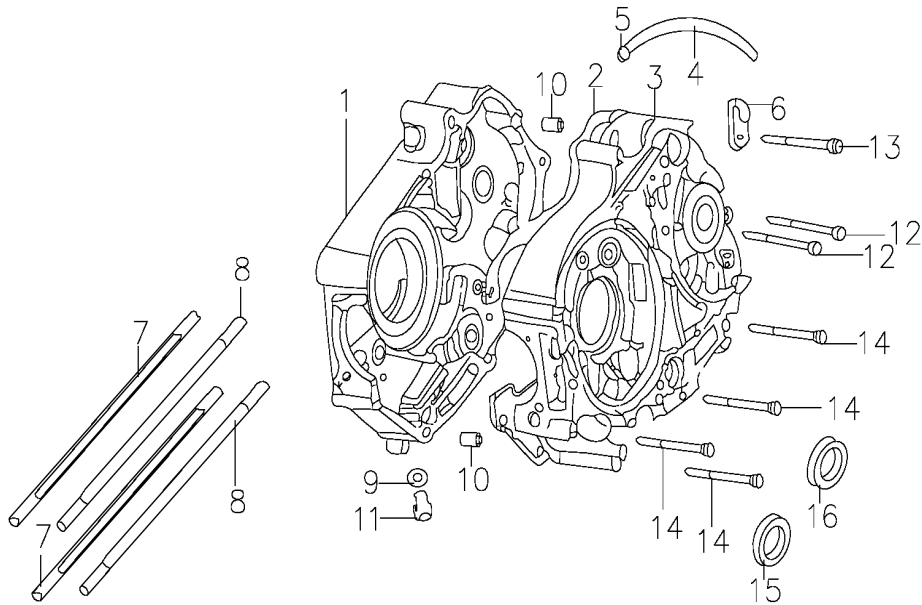


NO.	ICEBEAR PARTS NO.	FACTORY'S Part NO.	Description	Chinese name	QTY
1	PAD125-1-E-C-001	D00F013	单向器锁止板组合	ISOLATOR LOCKER ASSEMBLY	1
2	PAD125-1-E-C-002	D001F020	凸轮轴组件	CAMSHAFT SUBASSEMBLY	1
3	PAD125-1-E-C-003	D00F015	进气摇臂轴	AIR-IN ROCKERARM SHAFT	1
5	PAD125-1-E-C-004	D00F015	摇臂轴	ROCKERARM SHAFT	1
6	PAD125-1-E-C-005	D00F000	气门摇臂	ROCKER ARM, VALVE	2
9	PAD125-1-E-C-006	D00F034	气门内外弹簧座	UP SPRING SEAT	2
10	PAD125-1-E-C-007	D00F033	气门锁夹	AIR VALVE LOCKER	2
11	PAD125-1-E-C-008	D00H004	气门内弹簧	INNER SPRING, VALVE	2
12	PAD125-1-E-C-009	D00H003	气门外弹簧	OUTER SPRING, VALVE	2
14	PAD125-1-E-C-010	204F045	进气门	INDUCTION VALVE	1
15	PAD125-1-E-C-011	204F039	排气门	EXHAUST VALVE	1
16	PAD125-1-E-C-012	D00C043	油封	VALVE STEM SEAL	2
E-4		时规链	TIME CHAIN		



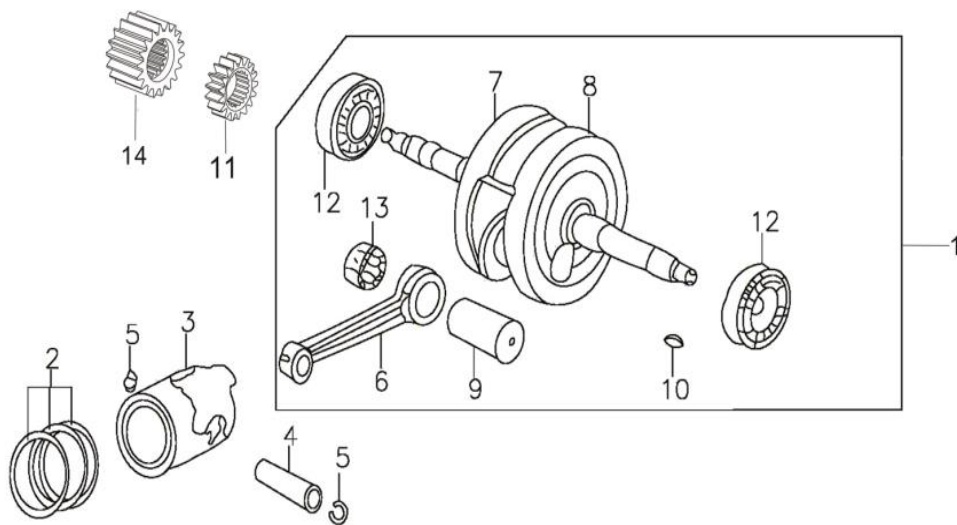
NO.	ICEBEAR PARTS NO.	FACTORY'S Part NO.	Description	Chinese name	QTY
1	PAD125-1-E-D-001	E03F011	正时从动链轮	TIMING DRIVEN SPROCKET	1
2	PAD125-1-E-D-002	E03F012	正时链条	TIMING CHAIN	1
3	PAD125-1-E-D-003	D00F043	链条张紧臂组件	CHAIN TENSION ARM SUBASSEMBLY	1
4	PAD125-1-E-D-004	D00C020	链条张紧滚轮组合	CHAIN TENSION CONTACT ROLLER ASSEMBLY	1
5	PAD125-1-E-D-005	D00F044	链条张紧臂芯轴	CHAIN TENSION ARM MANDREL	1
6	PAD125-1-E-D-006	D00H006	链条张紧杆弹簧	CHAIN TENSION STUD SPRING	1
7	PAD125-1-E-D-007	D00F042	链条张紧杆组件	CHAIN TENSION STUD SUBASSEMBLY	1
8	PAD125-1-E-D-008	D00C022	链条张紧杆头	CHAIN TENSION STUD HEAD	1

9	PAD125-1-E-D-009	E03C023	无芯导向轮	GUIDE WHEEL WITHOUT CORE	1
10	PAD125-1-E-D-010	D00F048	导向滚轮销	GUIDE ROLLER PIN	1
11	PAD125-1-E-D-011	E04C021	链条张紧滚轮 2	CHAIN TENSION CONTACT ROLLER II	1
12	PAD125-1-E-D-012	E04F041	链条张紧滚轮 2 销轴	CHAIN TENSION CONTACT ROLLER II PIN	1
13	PAD125-1-E-D-013	D00E025	密封螺栓	SEAL BOLT	1
14	PAD125-1-E-D-014	578305012	六角螺栓M5×12	BOLT M5×12	3
15	PAD125-1-E-D-015	D00L021	铝垫圈14	ALUMINIUM WASHER 14	1
16	PAD125-1-E-D-016	208-4-16	垫圈	WASHER	1
17	PAD125-1-E-D-017	D00L019	铝垫圈8	ALUMINIUM WASHER 8	1
18	PAD125-1-E-D-018	D00L020	螺栓	BOLT	1
E-5		左、右箱体	CRANKCASE		

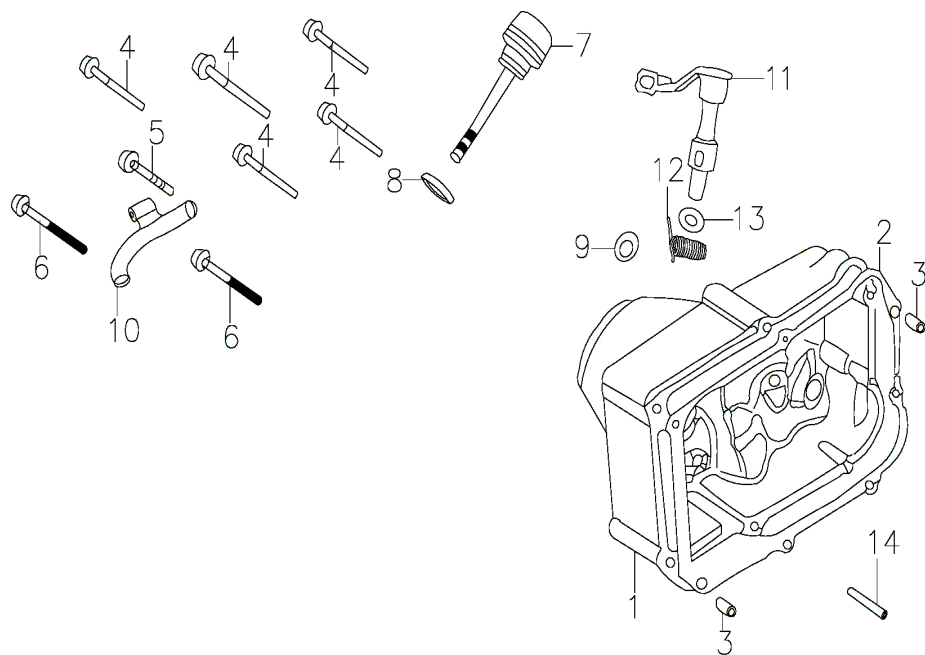


NO.	ICEBEAR PARTS NO.	FACTORY'S Part NO.	Description	Chinese name	QTY
1	PAD125-1-E-E-001	203A020PW	右曲轴箱体	RIGHT CRANKCASE BODY	1
2	PAD125-1-E-E-002	E04B005	曲轴箱密封垫	CRANKCASE SEALED PACKING	1
3	PAD125-1-E-E-003	203A010PW	左曲轴箱体	LEFT CRANKCASE BODY	1
4	PAD125-1-E-E-004	F00C024	通气管	BREATHING PIPE	1
7	PAD125-1-E-E-005	206M001	汽缸双头螺栓 A	CYLINDER TRAPPED STUD(A)	2
8	PAD125-1-E-E-006	206M002	汽缸双头螺栓 B	CYLINDER TRAPPED STUD (B)	2
11	PAD125-1-E-E-007	D00E026BX	放油螺栓	DISCHARGING OIL PLUG SCREW	1
15	PAD125-1-E-E-008	D001C008	油封	WASHER	1
16	PAD125-1-E-E-009	D00C026	油封	WASHER	1

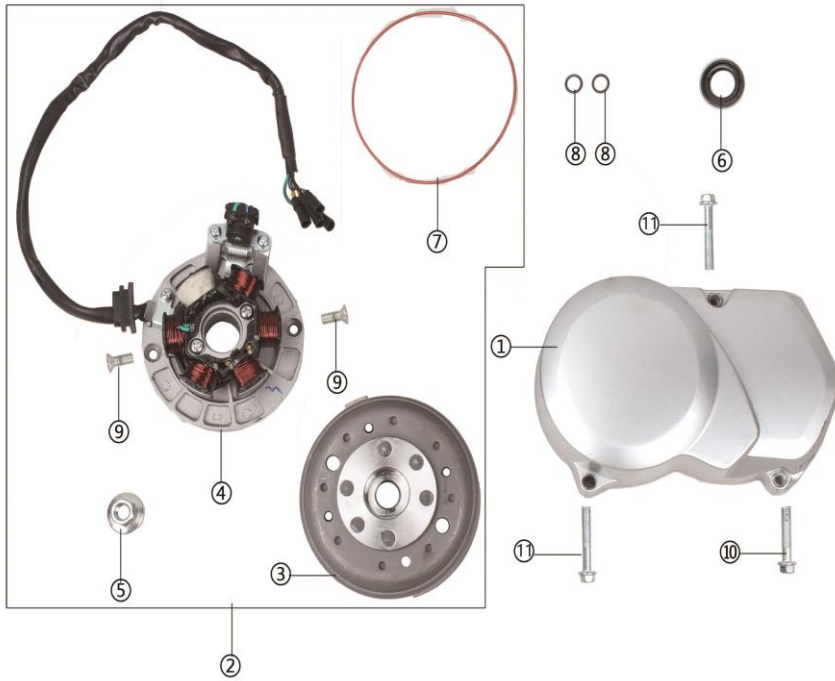
E-6		曲轴总成	CRANKSHAFT	
-----	--	------	------------	--



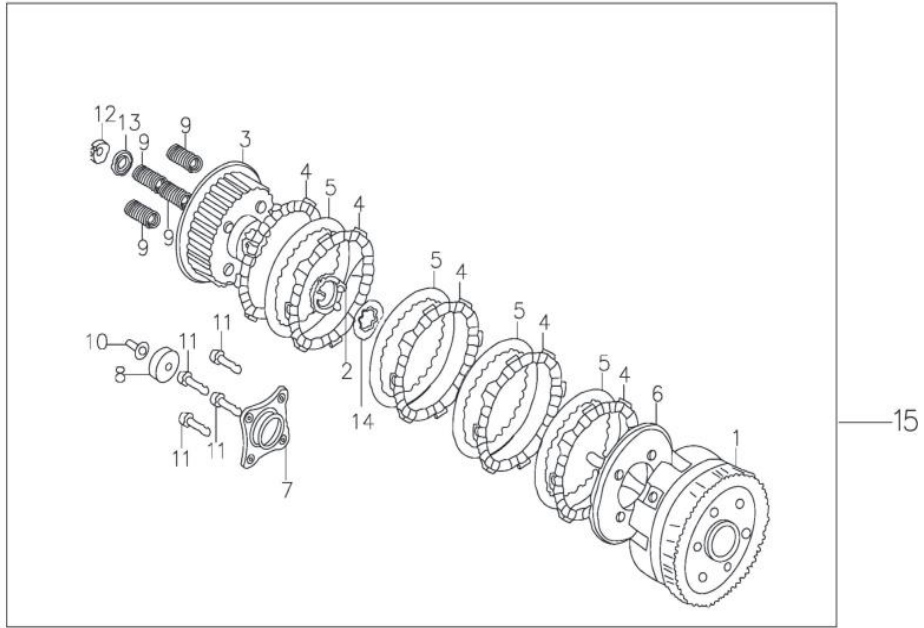
NO.	ICEBEAR PARTS NO.	FACTORY'S Part NO.	Description	Chinese name	QTY
1	PAD125-1-E-F-001	2154J000	曲柄连杆组件	CRANK CONNECTING ROD	1
2	PAD125-1-E-F-002	E001J013	活塞环组合	PISTON RING SET	1
3	PAD125-1-E-F-003	215J014	活塞	PISTON	1
4	PAD125-1-E-F-004	204J012	活塞销	PISTON PIN	1
5	PAD125-1-E-F-005	204J011	活塞销挡圈	PISTON PIN SHIELD RING	2
14	PAD125-1-E-F-006	A00K015	主动齿轮	PRIMARY DRIVER GEAR	1
E-7		右边盖	CRANKCASE COVER		



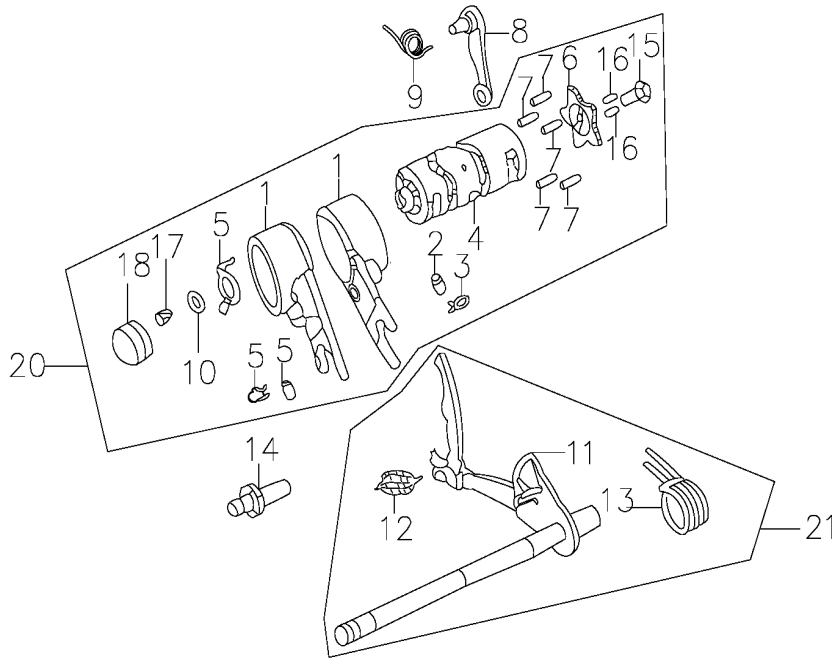
图号 Item No.	ERP 配件编号	中文名称 Chinese name	英文名称 English name	单 半 数量 Unit	
1	PAD125-1-E-G-001	D01A034PW	右曲轴箱盖	RIGHT CRANKCASE COVER	1
	PAD125-1-E-G-002	D01A034PW01	右大盖装饰盖/IRBIS	RIGHT COVER/IRBIS	1
2	PAD125-1-E-G-003	E04B002	密封垫	RIGHT CRANKCASE SEALED	1
3	PAD125-1-E-G-004	97108012	定位销	PITCHED PIN	2
7	PAD125-1-E-G-005	D00C038	机油标尺组合	OIL SCALE ASSEMBLY	1
8	PAD125-1-E-G-006	D00C060	O 型密封圈	O-SHAPED SEALED RING	1
9	PAD125-1-E-G-007	D00C016	油封	OIL SEAL	1
11	PAD125-1-E-G-008	E13G010BCR	离合器操纵杆	CLUTCH CONTROL LEVER	1
12	PAD125-1-E-G-009	E13H007	操纵杆复位弹簧	CONTROL LEVER RETURN SPRING	1
13	PAD125-1-E-G-010	F04C030	油封	OIL SEAL	1
14	PAD125-1-E-G-011	208-7-14	增油导管	OIL PIPE	1
E-8		左曲轴箱盖 磁电机	Left Crankcase Cover & Magneto		



NO.	ICEBEAR PARTS NO.	FACTORY'S Part NO.	Description	Chinese name	QTY
1	PAD125-1-E-H-001	A019A070PW	左边盖	LEFT CRANKCASE COVER	1
2	PAD125-1-E-H-002	A017D000	磁电机总成普70	MAGNETON	1
3	PAD125-1-E-H-003	A018D060	磁电机转子普70	FLYWHEEL	1
4	PAD125-1-E-H-004	A0229D070	磁电机定子普70	STATOR MODULE	1
5	PAD125-1-E-H-005	617710000BCR-1	六角螺母	HEX NUT	1
7	PAD125-1-E-H-006	D001C062	O型密封圈	O-SHAPED SEAL	1
9	PAD125-1-E-H-007	GB818	螺钉	BOLT	2
6	PAD125-1-E-H-008	D00C028	油封	OILE SEAL	1
8	PAD125-1-E-H-009	F002C048	O型密封圈	O-SHAPED SEAL	1
E-9		离合器组件	CLUTCH COMPONENT PART		

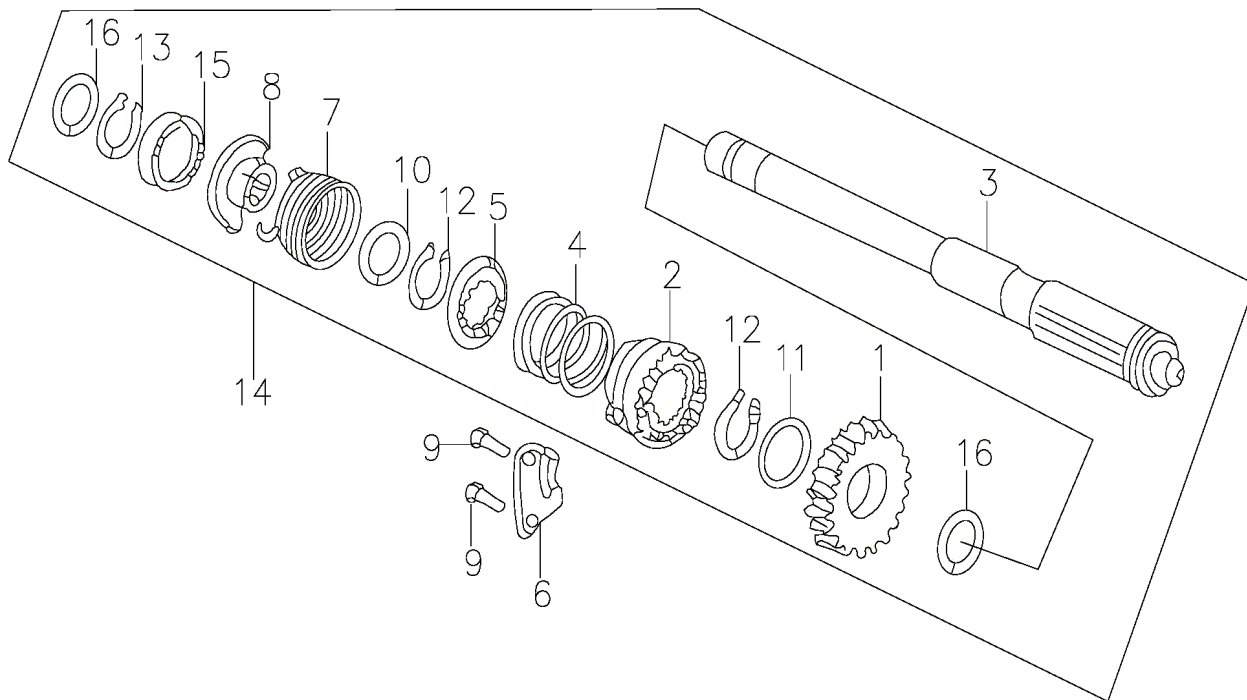


NO.	ICEBEAR PARTS NO.	FACTORY'S Part NO.	Description	Chinese name	QTY
14	PAD125-1-E-I-001	208-9-14	花键垫圈	SPLINE SHAFT WASHER	1
15	PAD125-1-E-I-002	200G060	离合器总成/手离合	CLUTCH ASSEMBLY	1
E-10		变速鼓组件	SHIFTING MOTIVATOR		

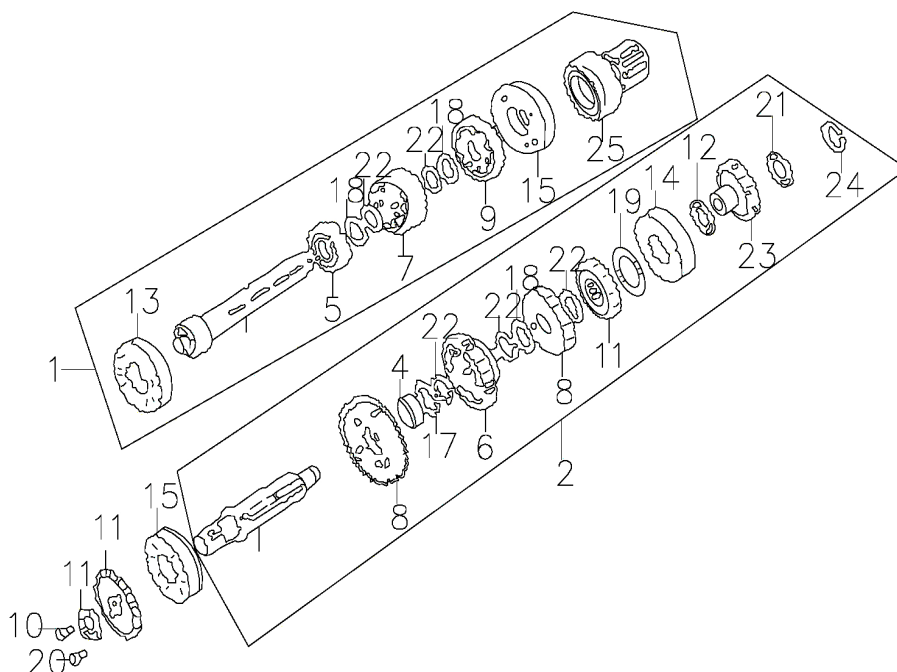


NO.	ICEBEAR PARTS NO.	FACTORY'S Part NO.	Description	Chinese name	QTY
8	PAD125-1-E-I-001	D05K070	变速鼓定位板组件	SPEED VARIATOR STRONGBACK SUBASS	1

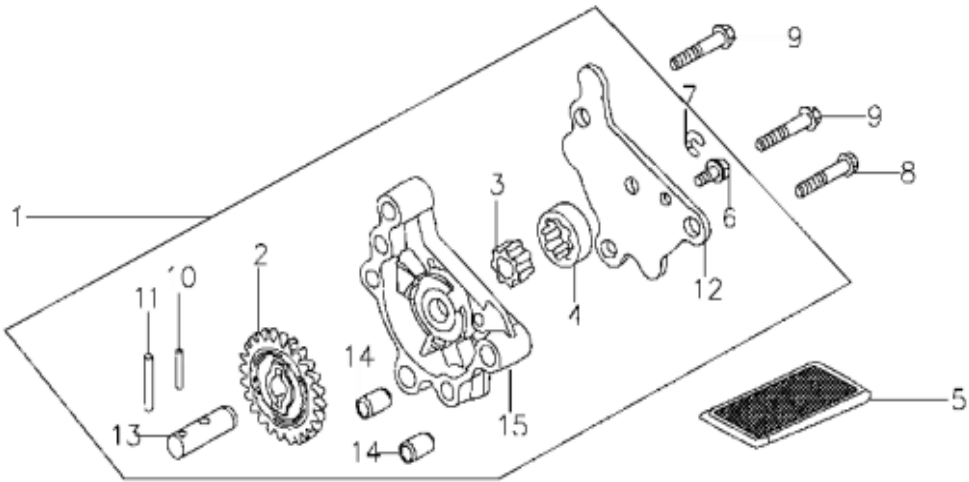
20	PAD125-1-E-I-002	A004K060	变速鼓组合	SHIFTING YOKE VARIATOR	1
21	PAD125-1-E-I-003	C03K000	换档臂组件	SHIFTING SUBASSEMBLY	1
E-11		起动轴组合	START ASSY		



图号 Item No.	ERP 配件编号	中文名称 Chinese name	英文名称 English name	单 数量 Unit	
14	PAD125-1-E-J-001	208-11-3	起动轴总成	Starting shaft assembly	1
E-12		主、副轴组件	SLOWING DOWN SUBASSEMBLY		



NO.	ICEBEAR PARTS NO.	FACTORY'S Part NO.	Description	Chinese name	QTY
1	PAD125-1-E-K-001	E05K030	传动主轴 (不含轴承)	TRANSMISSION MAIN SHAFT	1
2	PAD125-1-E-K-002	A001K040	传动副轴 (不含轴承)	TRANSMISSION COUNTER SHAFT	1
12	PAD125-1-E-K-003	208-12-12	主动链轮卡圈	SRIVE SPROCKET CLOSING RING	1
E-13					



NO.	ICEBEAR PARTS NO.	FACTORY'S Part NO.	Description	Chinese name	QTY
1	PAD125-1-E-L-001	2001E000/	机油泵部件	OIL PUMP COMPONENTS	1

单价

58.5

91

0.68

0.79

0.39

680
61
13
12
8
0.8
0.12
2.8
0.8
0.5
3.2
0.12
0.1
0.5

18
0.3
11.83
5
3.5

0.65
0.273
0.053
0.053
0.25
7.8

0.26

0.42

115
53.3
61.1
7.8
1.3

122.2

58.5

63.7

7.8

1.3

3.77

4.16

0.39

1.95

1.69

1.69

1.69

2.5

58.5

5.5

3.2

2.6

14.3

39

39
15.6
2.6

1.6
6.5
2.6
0.33
2.6
1.43
0.24
0.24
0.24

74.1

4.5
65
4.5
19.5
19.5
1.56
0.2
0.4
0.325

36.4

9.1

0.1

3

0.8

0.8

0.4

0.5

0.13

90

55.9

10.4
20.5
9
15
0.052
0.403
0.052
0.234
1.95
0.6
0.39
4.16
0.39
0.208
19.5
0.052
0.26
1.6
15
1.2

6.76
8.58
11.7
3.8
0.08

32.5

6.5
6.5
6.5
5
5
5.2
5.2
0.1
0.065
0.091
0.065
0.39

4
3.5
1
9.1

45

0.5

75

0.5

4.50
0.50
5.80
0.50
5.80
0.50
2.50
1.00
9.40
0.50
0.80
0.60
0.50

0.50
0.30
9.30
0.50
1.00
0.35

2.00
20.00
1.00
1.00
4.50

0.60
0.50
0.80
7.00
7.00
2.50

5.00
14.50
3.00
3.00
2.00
1.00
3.00
1.00
3.00

3.00

3.00

3.00

0.90

0.30

55.00

3.50

65.00

0.80

2.00

3.00

75.00

12.50

14.00

1.60

0.25

50.00

7.50

2.50

0.50

0.50

3.00

1.50

2.50

25.00

35.00

35.00

0.70

2.50

0.50

3.00

0.50

25.00

15

25

25.00

35.00

12.00