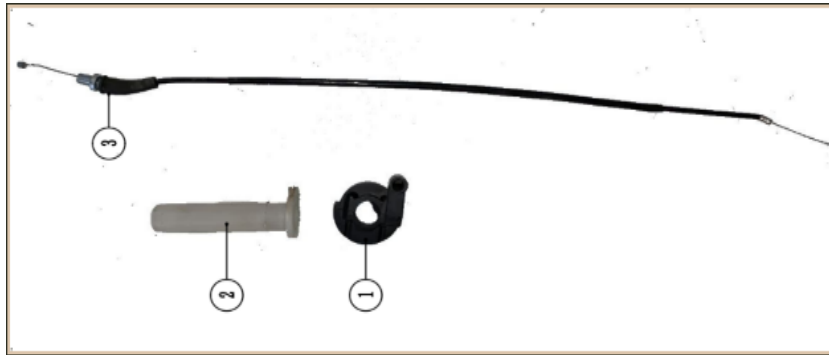


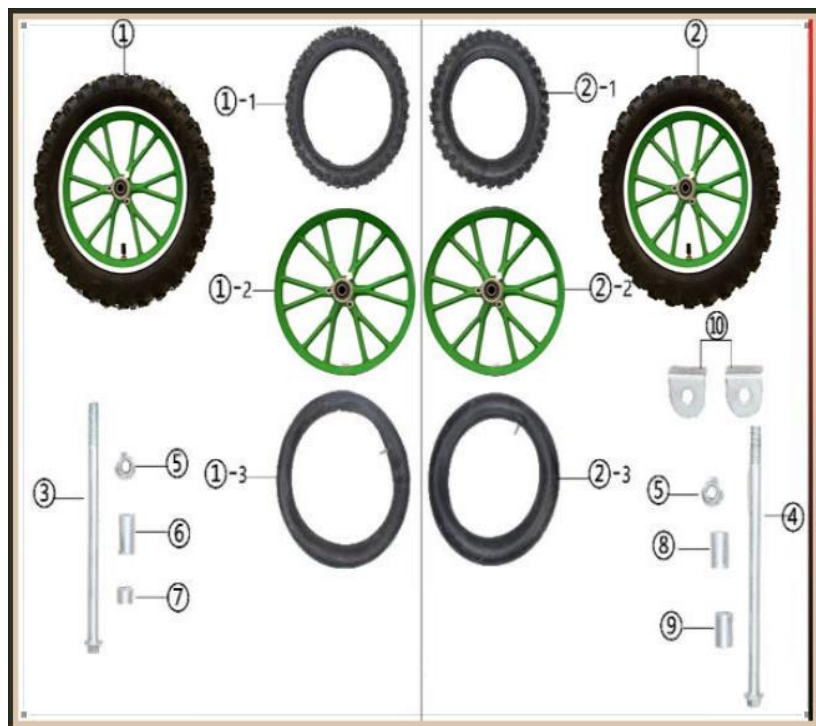
NO.	ICEBEAR PART NO.	FACTORY PART NO.	CHINESE NAME	English Name	QTY
1	PAD60-1-A-001	09050100	前泥板	Front fender	1
2	PAD60-1-A-002	16140000	座垫	Seat	1
3	PAD60-1-A-003	09050200	后尾板	Rear fender	1
4	PAD60-1-A-004	09050300	左护板	Fairing Kit Left	1
5	PAD60-1-A-005	09050400	右护板	Fairing Kit Right	1
6	PAD60-1-A-006	09050500	前面板	Number plate	1
7	PAD60-1-A-007	GB5787-6x12-2	六角法兰螺栓	Bolt flanged	3
8	PAD60-1-A-008	GB70.2-6x10-S	内六角小盘头螺栓	Hexagon socket head bolt	6
9	PAD60-1-A-009	GB70.2-6x12-S	内六角小盘头螺栓	Hexagon socket head bolt	2
10	PAD60-1-A-010	GB77.1-6-2	六角法兰螺母	Hex flange nut	3
11	PAD60-1-A-011	GB845-4x12-2	自攻钉	Self-tapping screw	4
12	PAD60-1-A-012	GB5787-6x12-2	六角法兰螺栓	Bolt flanged	1
13	PAD60-1-A-013	GB70.2-6x12-S	内六角小盘头螺栓 不锈钢	Hexagon socket head bolt	1
14	PAD60-1-A-014	10003700	面板支架	Panel bracket	1
15	PAD60-1-A-015	GB77.1-10-2	六角法兰螺母	Hex flange nut	1
16	PAD60-1-A-016	09000700	链条护罩	Chain Protector	1



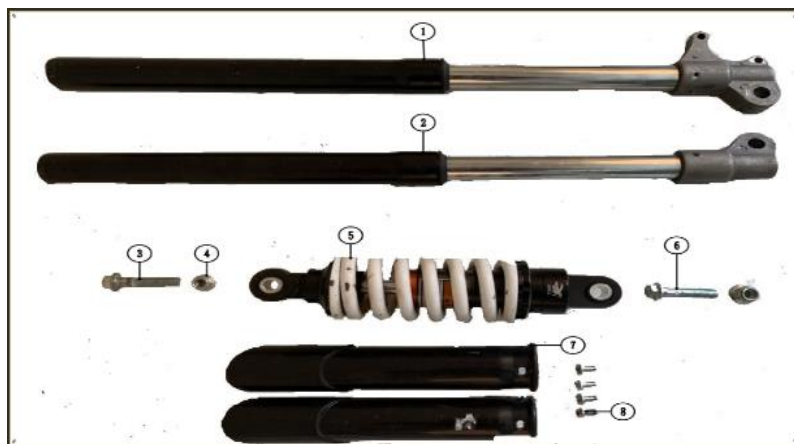
NO.	ICEBEAR PART NO.	FACTORY PART NO.	CHINESE NAME	English Name	QTY
1	PAD60-1-B-001	14060000	油箱	Fuel tank	1
2	PAD60-1-B-002	14002300	油箱盖	Fuel tank cap	1
3	PAD60-1-B-003	12002202	内六角大盘头螺栓	Hexagon socket head bolt	1
4	PAD60-1-B-004	14001206	通气阀	Vent valve	1
5	PAD60-1-B-005	14000900	油箱开关	Pet-cock fuel	1
6	PAD60-1-B-006	GB70. 1-6x12-S	内六角圆柱头螺栓	Hexagon socket head bolt	1
7	PAD60-1-B-007	GB77. 1-6-2	六角法兰螺母	Hex flange nut	1
8	PAD60-1-B-008	14001801	油管	Fuel hose	1
9	PAD60-1-B-009	14001801	油管	Fuel hose	1
10	PAD60-1-B-010	12001100	油管卡	Fuel hose clip	2



NO.	ICEBEAR PART NO.	FACTORY PART NO.	CHINESE NAME	English Name	QTY
1	PAD60-1-C-001	23000400	越野油门座	Throttle base	1
2	PAD60-1-C-002	23000102	白色把芯	Throttle inner	1
3	PAD60-1-C-003	20040000	油门线	Throttle cable	1



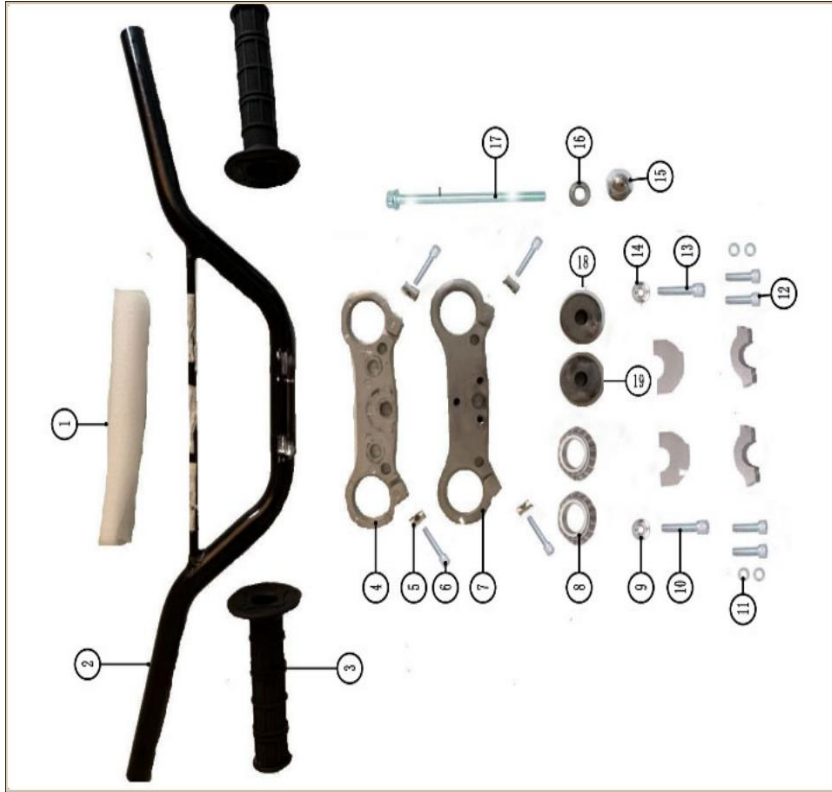
NO.	ICEBEAR PART NO.	FACTORY PART NO.	CHINESE NAME	English Name	QTY
1	PAD60-1-D-001	04070000	前轮辋总成	Rim assy front	1
1--1	PAD60-1-D-002	22030000	前轮外胎	Front tire	1
1--2	PAD60-1-D-003	04070100	前轮辋	Front rim	1
1--3	PAD60-1-D-004	22001100	前轮内胎	Front inner tube	1
2	PAD60-1-D-005	04080000	后轮辋总成	Rim assy. rear	1
2--1	PAD60-1-D-006	22040000	后轮外胎	Rear tire	1
2--2	PAD60-1-D-007	04080100	后轮辋	Rear rim	1
2--3	PAD60-1-D-008	22001100	后轮内胎	Front inner tube	1
3	PAD60-1-D-009	GB5787-12x170-2	前轮轴	Front axle	1
4	PAD60-1-D-010	GB5787-12x180-2	后轮轴	Rear axle	1
5	PAD60-1-D-011	GB6183-12-2	六角法兰螺母	Hex flange nut	2
6	PAD60-1-D-012	12002800	前左隔套	Front axle spacer LH	1
7	PAD60-1-D-013	12002900	前右隔套	Front axle spacer RH	1
8	PAD60-1-D-014	12003000	后左隔套	Rear axle spacer LH	1
9	PAD60-1-D-015	12002900	后右隔套	Rear axle spacer RH	1
10	PAD60-1-D-016	02002400	千斤片	Chain adjuster	2



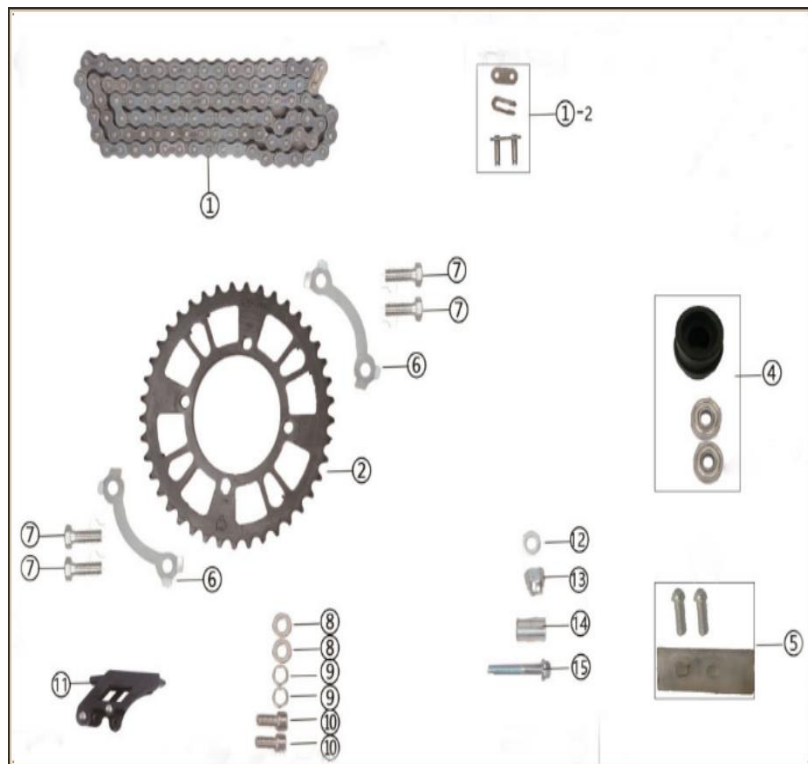
NO.	ICEBEAR PART NO.	FACTORY PART NO.	CHINESE NAME	English Name	QTY
①	PAD60-1-E-001	19160100	左前减震器	Up-side front suspenssion.Left	1
②	PAD60-1-E-002	19160200	右前减震器	Up-side front suspenssion.Right	1
③	PAD60-1-E-003	GB5787-10x40-2	六角法兰面螺栓	Rolt, flanged	1
④	PAD60-1-E-004	GB6183-10-2	六角法兰面锁紧螺母	Nut, flanged locking	2
⑤	PAD60-1-E-005	19040001	后减震	Rear shock	1
⑥	PAD60-1-E-006	GB5787-10x55-2	六角法兰面螺栓	Bolt, flanged	1
⑦	PAD60-1-E-007	19000301	前减震左右护板	Front suspension L/R protector	1
⑧	PAD60-1-E-008	GB818-5x12-2	护板螺丝	Front suspension protector bolt	4



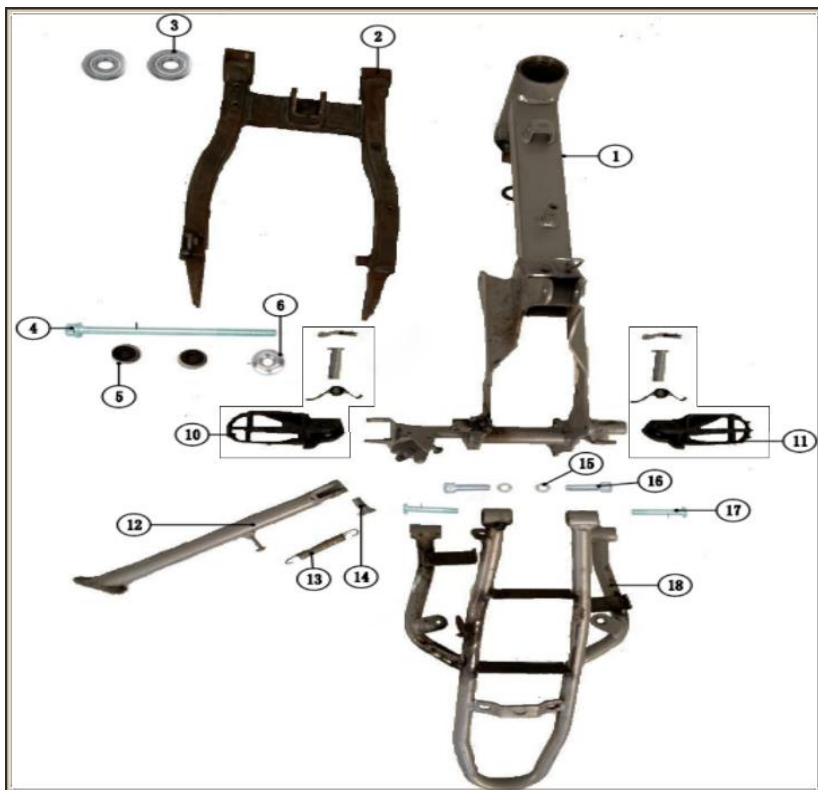
NO.	ICEBEAR PART NO.	FACTORY PART NO.	CHINESE NAME	English Name	QTY
1	PAD60-1-F-001	21300000	消音器前管	Exhaust pipe	1
2	PAD60-1-F-002	GB70.1-6x20-2	内六角圆柱头螺栓	Hexagon socket head bolt	2
3	PAD60-1-F-003	21310000	消音器	Muffler	1
4	PAD60-1-F-004	GB5787-8x25-2	六角法兰螺栓	Bolt, flanged	1
5	PAD60-1-F-005	12003100	消音器隔套	Muffler spacer	1
6	PAD60-1-F-006	GB6183-8-2	防松螺母	Nut, flanged locking	1



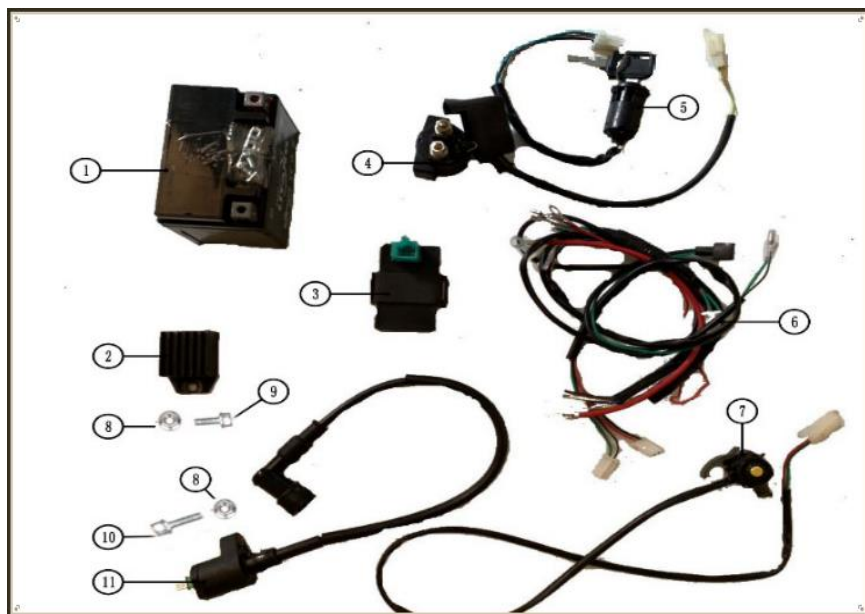
NO.	ICEBEAR PART NO.	FACTORY PART NO.	CHINESE NAME	English Name	QTY
1	PAD60-1-G-001	18000600	圆形护胸	Foam padding	1
2	PAD60-1-G-002	18080000	方向把	Handle bar	1
3	PAD60-1-G-003	23030001	左右把套	left & right hand grip	1
4	PAD60-1-G-004	01080100	上联板	Top triple clamp	1
5	PAD60-1-G-005	12003200	固定螺母	Fixing nut	4
6	PAD60-1-G-006	12003300	联板锁螺栓	Fixing bolt	4
7	PAD60-1-G-007	01080200	下联板	Bottom triple clamp	1
8	PAD60-1-G-008	29110000	滚针轴承总成	Top needle bearing assy	1
9	PAD60-1-G-009	GB6183-8-2	防松螺母	Nut, flanged locking	1
10	PAD60-1-G-010	GB70.1-8x35-2	内六角圆柱头螺栓	Hexagon socket head bolt	1
11	PAD60-1-G-011	GB93-8x13x2-2	弹垫	Spring gasket	4
12	PAD60-1-G-012	GB70.1-8x25-2	内六角圆柱头螺栓	Hexagon socket head bolt	4
13	PAD60-1-G-013	GB70.1-8x35-2	内六角圆柱头螺栓	Hexagon socket head bolt	1
14	PAD60-1-G-014	GB6183-8-2	防松螺母	Nut, flanged locking	1
15	PAD60-1-G-015	12000800	盖母	Cap nut	1
16	PAD60-1-G-016	GB97.1-10-2	大垫片	Gasket	1
17	PAD60-1-G-017	GB5787-10x185-2	六角法兰螺栓	Bolt, flanged	1
18	PAD60-1-G-018	12003400	上隔套	Top Spacer	1
19	PAD60-1-G-019	12003500	上隔套	Small Spacer	1
20	PAD60-1-G-020	01080300	上压块	Bottom handle bar riser	2
21	PAD60-1-G-021	01080400	下压块	Top handle bar riser	2



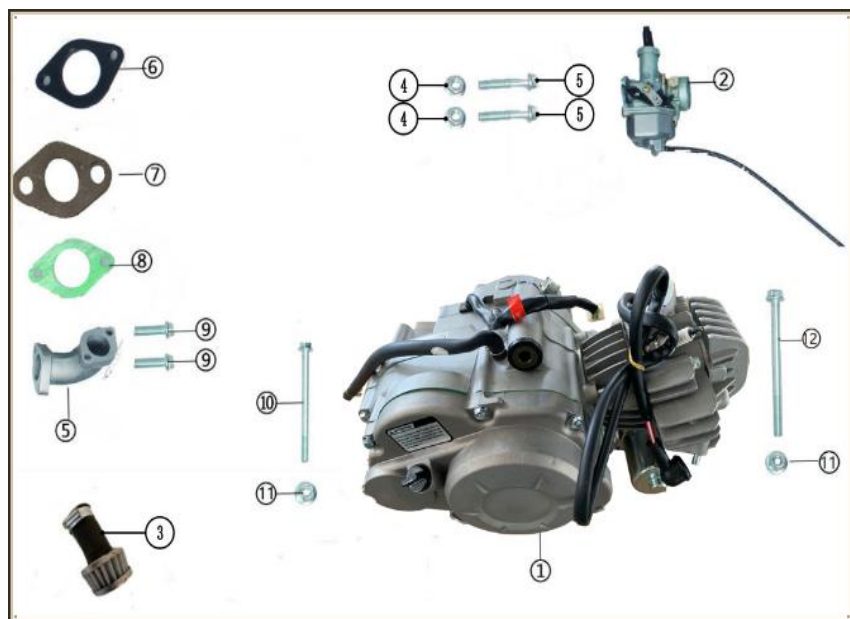
NO.	ICEBEAR PART NO.	FACTORY PART NO.	CHINESE NAME	English Name	QTY
1	PAD60-1-H-001	06030000	链条总成	Chain assembly	1
1--2	PAD60-1-H-002	06000100	链条接头	Chain Connctor	1
2	PAD60-1-H-003	32020300	后链轮	Rear sprocket	1
4	PAD60-1-H-004	02002400	导链轮	Chain roller	1
5	PAD60-1-H-005	02002200	导链片	chain plate guide	1
6	PAD60-1-H-006	32000100	锁片	Spocket lock plates	2
7	PAD60-1-H-007	GB5782-8x25-2	六角头台阶螺栓	Bolt flanged	4
8	PAD60-1-H-008	GB97.1-8x16x1-2	平垫圈	Flat washer	2
9	PAD60-1-H-009	GB93-8x13x2-2	弹垫圈	Lock washer	2
10	PAD60-1-H-010	GB70.1-8x20-2	内六角圆柱头螺栓	Hexagon socket head bolt	2
11	PAD60-1-H-011	02001800	挡链器	Chain guide	1
12	PAD60-1-H-012	GB97.1-8.5x16x3-2	垫片	Gasket	1
13	PAD60-1-H-013	GB923-8x15-S	球头螺母	Nut	1
14	PAD60-1-H-014	02002500	导链轮衬套	Chain roller spacer	1
15	PAD60-1-H-015	GB5787-8x55-2	六角法兰面螺栓	Bolt flanged	1



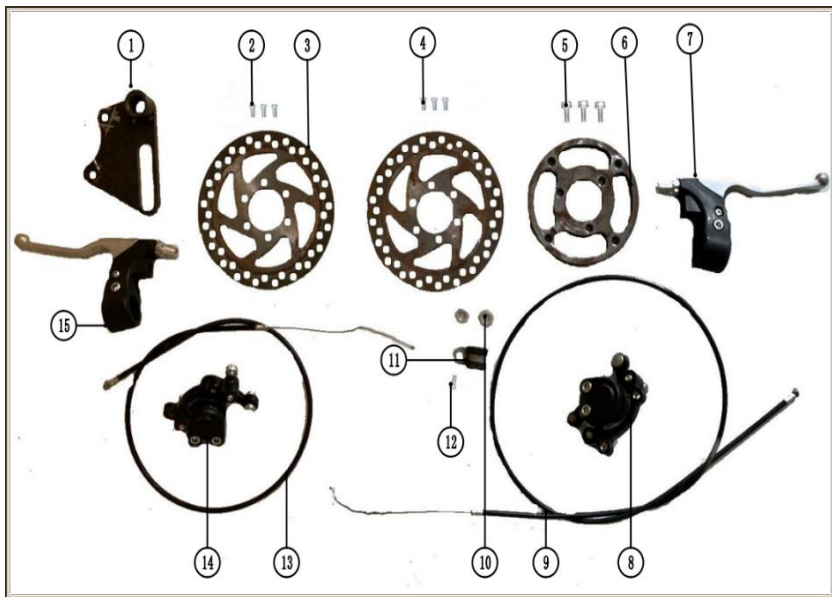
NO.	ICEBEAR PART NO.	FACTORY PART NO.	CHINESE NAME	English Name	QTY
1	PAD60-1-I-001	10040000	主车架	Frame	1
2	PAD60-1-I-002	02030000	后平叉总成	Swing arm	1
3	PAD60-1-I-003	29070000	后平叉轴承	Swing arm bearing	2
4	PAD60-1-I-004	GB5787-12x170-2	平叉轴	Swingarm axle	1
5	PAD60-1-I-005	12003400	后平叉隔套	Swing arm spacer	2
6	PAD60-1-I-006	29070000	六角法兰面锁紧螺母	Nut flanged locking	1
10	PAD60-1-I-007	11090201	左脚踏	Foot peg left	1
11	PAD60-1-I-008	11090101	右脚踏	Foot peg right	1
12	PAD60-1-I-009	10040100	单撑	Single Stand	1
13	PAD60-1-I-010	06080000	单撑弹簧	Single Stand Spring	1
14	PAD60-1-I-011	GB5782-10x12-2	六角头台阶螺栓	Bolt flanged	1
15	PAD60-1-I-012	GB93-8x13x2-2	弹垫圈	Lock washer	2
16	PAD60-1-I-013	GB70.1-8x20-2	内六角圆柱头螺栓	Hexagon socket head bolt	2
17	PAD60-1-I-014	GB5787-8x40-2	六角法兰面螺栓	Bolt flanged	2
18	PAD60-1-I-015	10040200	后附梁	Tail bracket	1



NO.	ICEBEAR PART NO.	FACTORY PART NO.	CHINESE NAME	English Name	QTY
1	PAD60-1-J-001	07004000	电池	Battery	1
2	PAD60-1-J-002	07000500	整流器	Rectifier	1
3	PAD60-1-J-003	07050000	点火器	CDI assembly	1
4	PAD60-1-J-004	07070000	继电器	Relay	1
5	PAD60-1-J-005	07001700	电门锁	Electric lock	1
6	PAD60-1-J-006	07180000	主线缆	Wiring harness	1
7	PAD60-1-J-007	07001300	圆点启动开关	Dot start switch	1
8	PAD60-1-J-008	GB77. 1-6-2	六角法兰螺母	Nut flanged	2
9	PAD60-1-J-009	GB5787-6x16-2	六角法兰面螺栓	Bolt flanged	1
10	PAD60-1-J-010	GB5787-6x25-2	六角法兰面螺栓	Bolt flanged	1
11	PAD60-1-J-011	07120000	高压包	Ignition coil assembly	1

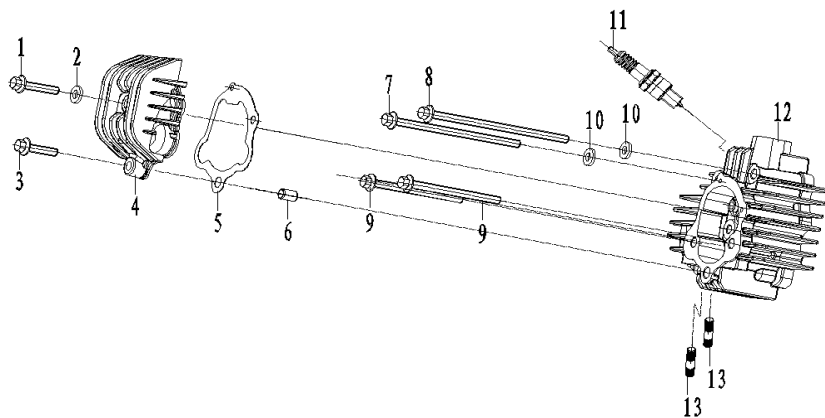


NO.	ICEBEAR PART NO.	FACTORY PART NO.	CHINESE NAME	English Name	QTY
1	PAD60-1-K-001	05230000	发动机总成	Engine assembly	1
2	PAD60-1-K-002	17150000	化油器	Carburetor	1
3	PAD60-1-K-003	17001900	空滤器	Air filiter	1
4	PAD60-1-K-004	GB77. 1-6-2	六角法兰螺母	Nut flanged	2
5	PAD60-1-K-005	GB5787-6x30-2	六角法兰面螺栓	Bolt flanged	2
6	PAD60-1-K-006	5003600	胶木垫	Bakelite mat gasket	1
7	PAD60-1-K-007	5002400	纸垫	Top Gasket	1
8	PAD60-1-K-008	5002400	纸垫	Bottom Gasket	1
9	PAD60-1-K-009	GB5787-6x28-2	六角法兰面螺栓	Bolt flanged	2
10	PAD60-1-K-010	GB5787-8x115-2	六角法兰面螺栓	Bolt flanged	1
11	PAD60-1-K-011	GB6183-8-2	六角法兰螺母	Nut flanged	2
12	PAD60-1-K-012	GB5787-8x105-2	六角法兰面螺栓	Bolt flanged	1



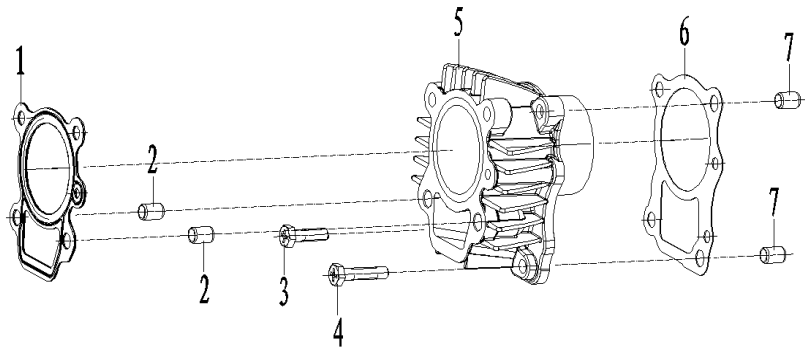
NO.	ICEBEAR PART NO.	FACTORY PART NO.	CHINESE NAME	English Name	QTY
1	PAD60-1-L-001	08001500	后刹支架	Rear brake bracket	1
2	PAD60-1-L-002	GB70.2-6x12-S	内六角小盘头螺栓	Hexagon socket head bolt	3
3	PAD60-1-L-003	27060000	前圆盘	Front brake disc	2
4	PAD60-1-L-004	GB70.2-6x12-S	后圆盘	Rear brake disc	3
5	PAD60-1-L-005	GB5787-8x25-2	六角法兰螺栓	Bolt flanged	4
6	PAD60-1-L-006	32000500	后链轮转换片	Rear sprocket Conversion plate	1
7	PAD60-1-L-007	24090100	右小把	Right lever	1
8	PAD60-1-L-008	08070000	后碟刹总成	Rear Brake assy	1
9	PAD60-1-L-009	20050000	后碟刹拉线	Rear Brake cable	1
10	PAD60-1-L-010	10003800	后刹支架隔套	Rear brake bracket spacer	2
11	PAD60-1-L-011	25000900	后刹油管卡	Hose Clip	1
12	PAD60-1-L-012	GB70.2-6x12-S	内六角小盘头螺栓	Hexagon socket head bolt	1
13	PAD60-1-L-013	20060000	前碟刹拉线	Front Brake cable	1
14	PAD60-1-L-014	08080000	前碟刹总成	Front Brake assy	1
15	PAD60-1-L-015	24090200	左小把	Left lever	1

气缸头部件
CYLINDER HEAD
ASSY



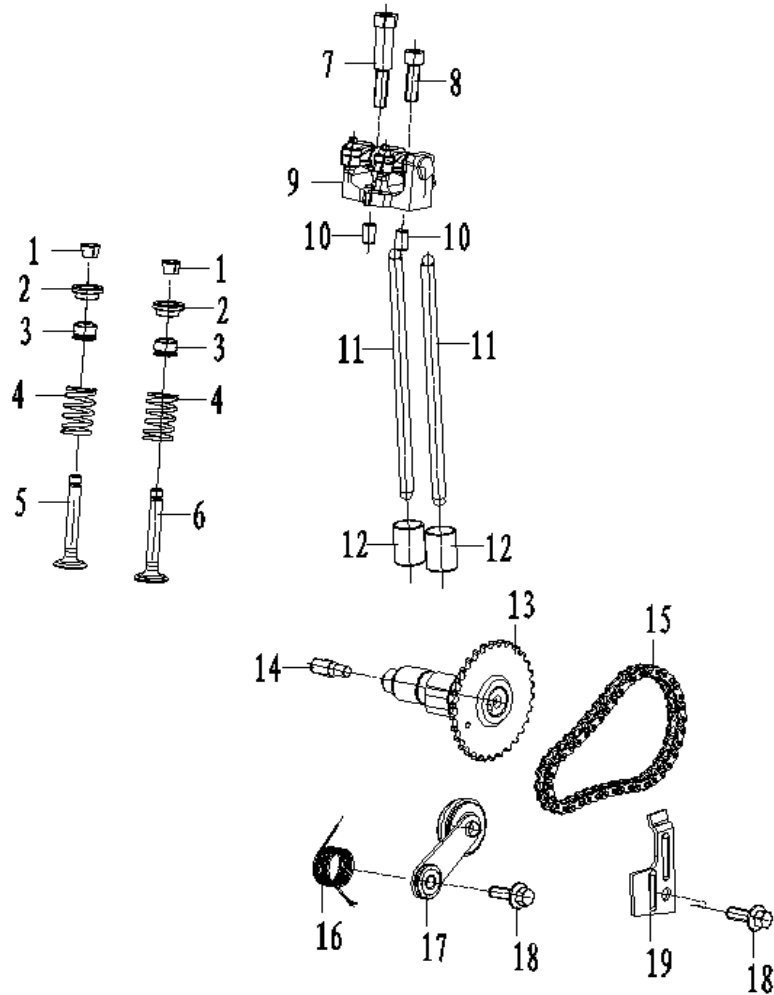
NO.	ICEBEAR PART NO.	FACTORY PART NO.	CHINESE NAME	English Name	QTY
1	PAD60-1-M-001	100011534-0002	GB16674小盘螺栓M6×25(兰白锌)	Bolt, M6×25	1
2	PAD60-1-M-002	100106565	平垫圈(φ6.2×2×φ13)	Washer, φ6.2×2×φ13	1
3	PAD60-1-M-003	100011536-0002	GB16674小盘螺栓M6×30(兰白锌)	Bolt, M6×30	1
4	PAD60-1-M-004	100055330-0001	ZL60缸头上盖(抛丸钝化)	Upper Cover Cylinder Head	1
5	PAD60-1-M-005	100055320	ZL60气缸头上盖密封垫	Gasket Cylinder Head Upper Cover	1
6	PAD60-1-M-006	100100867	定位销φ8×12×φ6.3	Dowel Pin, φ8×12×φ6.3	1
7	PAD60-1-M-007	100033090-0004	GB16674小盘螺栓M6×105(兰白锌)	Bolt, M6×105	1
8	PAD60-1-M-008	100011546-0001	GB16674小盘螺栓M6×115(兰白锌)	Bolt, M6×115	1
9	PAD60-1-M-009	100011544-0001	GB16674小盘螺栓M6×75(兰白锌)	Bolt, M6×75	2
10	PAD60-1-M-010	100106337	平垫圈(φ6.2×2×φ13_兰白锌)	Washer, φ6.2×2×φ13	2
11	PAD60-1-M-011	100104126	C100火花塞部件(A7TC)	Spark Plug	1
12	PAD60-1-M-012	100054810-0001	ZL60气缸头组合(抛丸钝化)	Cylinder Head Assy	1
13	PAD60-1-M-013	100069658-0001	ZL60排气口双头螺栓M6×25(兰白锌)	Stud	2

气缸体部件
CYLINDER
ASSEMBLY



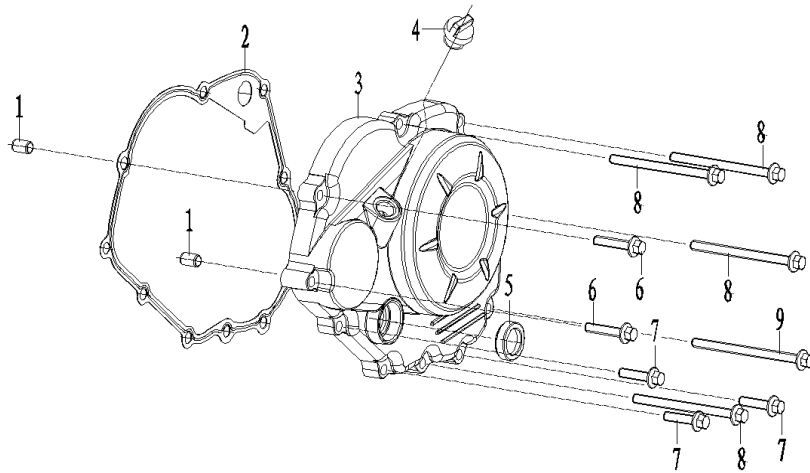
NO.	ICEBEAR PART NO.	FACTORY PART NO.	CHINESE NAME	English Name	QTY
1	PAD60-1-N-001	100055314	ZL60气缸头密封垫组合	Gasket Assy Cylinder Head	1
2	PAD60-1-N-002	100100867	定位销 $\phi 8 \times 12 \times \phi 6.3$	Dowel Pin, $\phi 8 \times 12 \times \phi 6.3$	2
3	PAD60-1-N-003	100100382-0007	70缸体箱体连接螺栓 $M6 \times 23$ (兰白锌)	Bolt, $M6 \times 23$	1
4	PAD60-1-N-004	100204662-0007	C110-B缸体箱体连接螺栓 $M6 \times 30$ (兰白锌)	Bolt, $M6 \times 30$	1
5	PAD60-1-N-005	100054691-0001	ZL60气缸体部件 (无缸标_抛丸钝化)	Cylinder Block Assembly	1
6	PAD60-1-N-006	100055318	ZL60气缸体密封垫	Gasket Cylinder Block	1
7	PAD60-1-N-007	100101211	定位销 $\phi 8 \times 14 \times \phi 7$	Dowel Pin, $\phi 8 \times 14 \times \phi 7$	2

配气机构 VALVE
MECHANISM



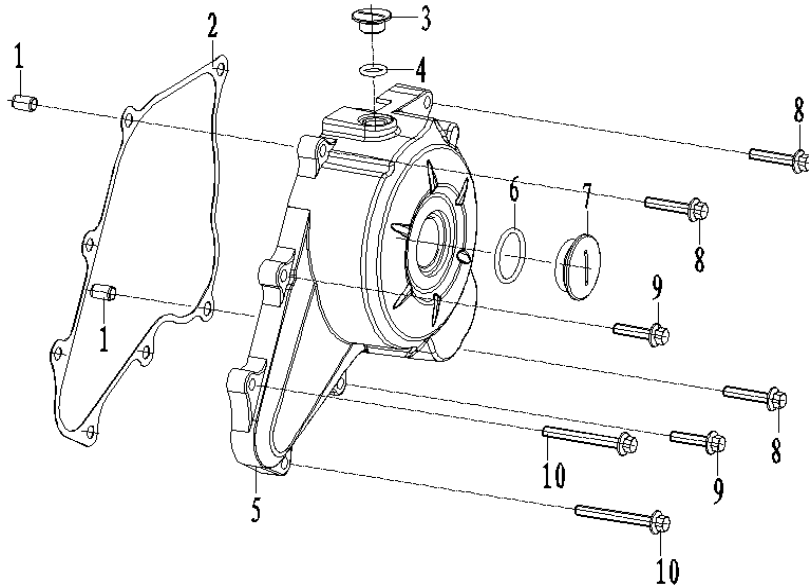
NO.	ICEBEAR PART NO.	FACTORY PART NO.	CHINESE NAME	English Name	QTY
1	PAD60-1-0-001	100050896	CG125D气门锁夹(改进型)	Valve Locker	4
2	PAD60-1-0-002	100052724	ZL60气门弹簧座(上)	SpRing, Seat	2
3	PAD60-1-0-003	100105336	CG125D挡油罩组合	Seal Valve Stem	2
4	PAD60-1-0-004	100052645	ZL60气门弹簧	Valve Outer Spring	2
5	PAD60-1-0-005	100052722	ZL60进气门	Intake Valve	1
6	PAD60-1-0-006	100052723	ZL60排气门	Exhaust Valve	1
7	PAD60-1-0-007	100053225	ZL60摇臂安装螺栓(一)	Rocker Install Bolt	1
8	PAD60-1-0-008	100053226	ZL60摇臂安装螺栓(二)	Rocker Install Bolt	1
9	PAD60-1-0-009	100053855	ZL60气门摇臂组合(整体式)	Rocker Arm Assembly Valve	1
10	PAD60-1-0-010	100100911	圆柱销 $\phi 6 \times 10$	Pin, $\phi 6 \times 10$	2
11	PAD60-1-0-011	100051399	ZL60推杆组合	Push Lever Comp	2
12	PAD60-1-0-012	100051398	ZL60推杆座套	Handspike Socket Sleeve	2
13	PAD60-1-0-013	100051397	ZL60凸轮轴组件(含正时从动链轮)	Gamp Shaft Comp	1
14	PAD60-1-0-014	100051400	ZL60凸轮轴螺钉	Camshaft Bolt	1
15	PAD60-1-0-015	100055331	ZL60正时链条组合(42)	Sproket Chain	1
16	PAD60-1-0-016	100051403	ZL60链条张紧臂弹簧	Spring	1
17	PAD60-1-0-017	100051402	ZL60链条张紧臂组合	Chain Adjusting Set	1
18	PAD60-1-0-018	100055589-0006	GB16674小盘螺栓M6×16(兰白锌)	Bolt, M6×16	2
19	PAD60-1-0-019	100051008	ZL60正时从动链轮压板	Chain Wheel Platen	1

右曲轴箱盖
RIGHT CRANKCASE
COVER

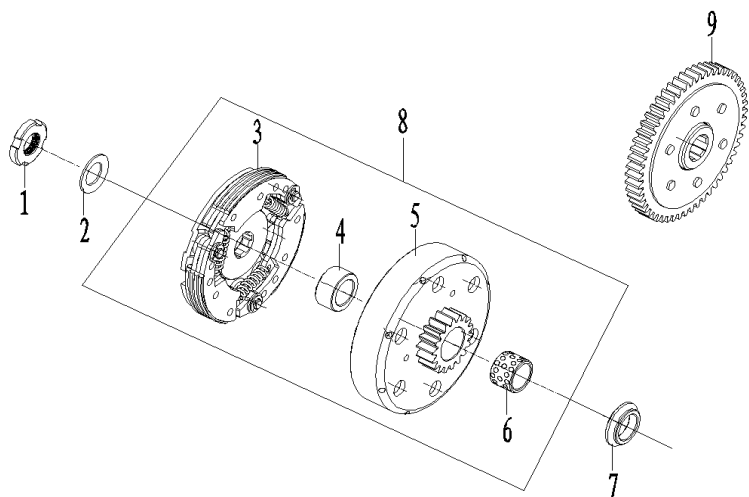


NO.	ICEBEAR PART NO.	FACTORY PART NO.	CHINESE NAME	English Name	QTY
1	PAD60-1-P-001	100100867	定位销 $\phi 8 \times 12 \times \phi 6.3$	Dowel Pin, $\phi 8 \times 12 \times \phi 6.3$	2
2	PAD60-1-P-002	100055317	ZL60右曲轴箱盖密封垫	Gasket R. Crankcase Cover	1
3	PAD60-1-P-003	100102326-0003	ZL60右盖组合 (普通款_白板 8801)	Cover Comp Right Crankcase	1
4	PAD60-1-P-004	100051009	ZL60机油塞组合	Oil Plug Assy	1
5	PAD60-1-P-005	100101319	CG125D机油观察窗	Oil Lelve Sight Window	1
6	PAD60-1-P-006	100011536-0002	GB16674小盘螺栓M6×30(兰白 锌)	Bolt, M6×30	2
7	PAD60-1-P-007	100011534-0002	GB16674小盘螺栓M6×25(兰白 锌)	Bolt, M6×25	3
8	PAD60-1-P-008	100031960-0007	GB16674小盘螺栓M6×80(兰白 锌)	Bolt, M6×80	4
9	PAD60-1-P-009	100033088-0005	GB16674小盘螺栓M6×85(兰白 锌)	Bolt, M6×85	1

左曲轴箱盖 LEFT
CRANKCASE COVER



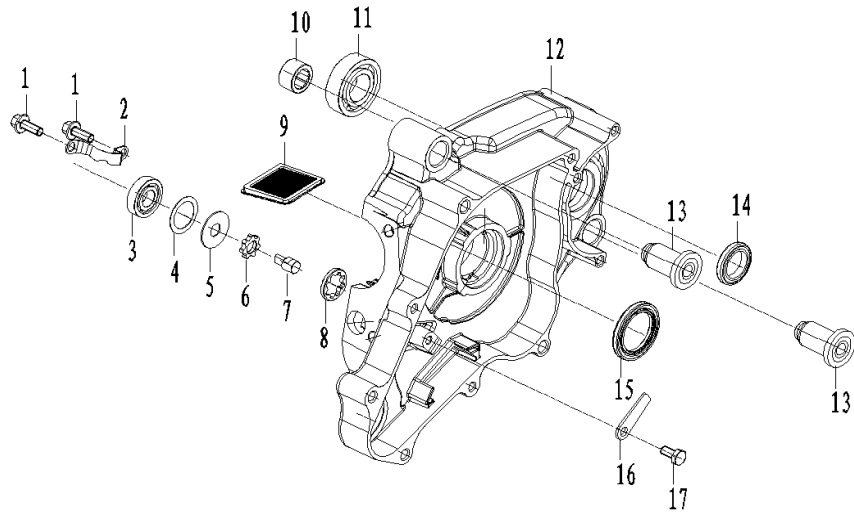
NO.	ICEBEAR PART NO.	FACTORY PART NO.	CHINESE NAME	English Name	QTY
1	PAD60-1-Q-001	100100867	定位销 $\phi 8 \times 12 \times \phi 6.3$	Dowel Pin, $\phi 8 \times 12 \times \phi 6.3$	2
2	PAD60-1-Q-002	100055319	ZL60左曲轴箱前盖密封垫	Gasket L. Crankcase Cover	1
3	PAD60-1-Q-003	100103059-0026	C100小视孔盖 (8801)	Cap Small View Hole	1
4	PAD60-1-Q-004	100010074	O型圈 ($\phi 13.2 \times 2.65$ _丁腈胶)	O-Ring, $\phi 13.2 \times 2.65$	1
5	PAD60-1-Q-005	100063724-0003	ZL60左后盖 (8801)	Back Part L. Crankcase Cover	1
6	PAD60-1-Q-006	100107731	O型圈 ($\phi 27.4 \times 2.65$ _丁腈胶)	O-Ring, $\phi 27.4 \times 2.65$	1
7	PAD60-1-Q-007	100103062-0025	C100大视孔盖 (8801)	Cap Big View Hole	1
8	PAD60-1-Q-008	100011536-0002	GB16674小盘螺栓M6 \times 30(兰白锌)	Bolt, M6 \times 30	3
9	PAD60-1-Q-009	100011534-0002	GB16674小盘螺栓M6 \times 25(兰白锌)	Bolt, M6 \times 25	2
10	PAD60-1-Q-010	100011540-0007	GB16674小盘螺栓M6 \times 50(兰白锌)	Bolt, M6 \times 50	2



离合器总成
CLUTCH ASSY

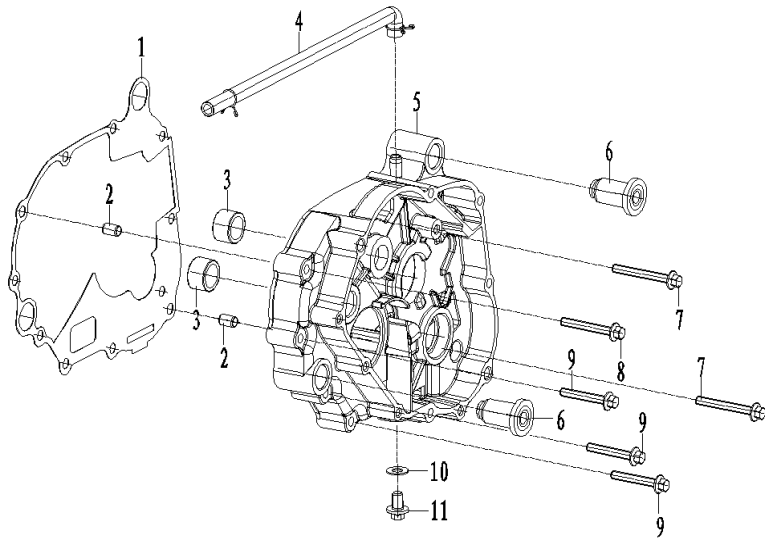
NO.	ICEBEAR PART NO.	FACTORY PART NO.	CHINESE NAME	English Name	QTY
1	PAD60-1-P-001	100100528	C100初级离合器圆螺母	Lock Nut Primary Clutch	1
2	PAD60-1-P-002	100103344	C100主离合器碟形垫圈	Dish Washer, Clutch	1
3	PAD60-1-P-003	100050969	ZL60初级离合器主动盘组合	Driving Plate Group	1
4	PAD60-1-P-004	100050964	ZL60离合器主动盘轴套	Shaft Sleeve	1
5	PAD60-1-P-005	100050966	ZL60离合器外罩组合	Outer Cover Assemble	1
6	PAD60-1-P-006	100050965	ZL60离合器轴套	Shaft Sleeve	1
7	PAD60-1-P-007	100050948	A08离合器座圈衬套	Bush	1
8	PAD60-1-P-008	100050963	ZL60离合器总成	Clutch Assemble	1
9	PAD60-1-P-009	100304539	ZL60从动齿组合	Driven Gear Comp	1

左曲轴箱 LEFT
CRANKCASE



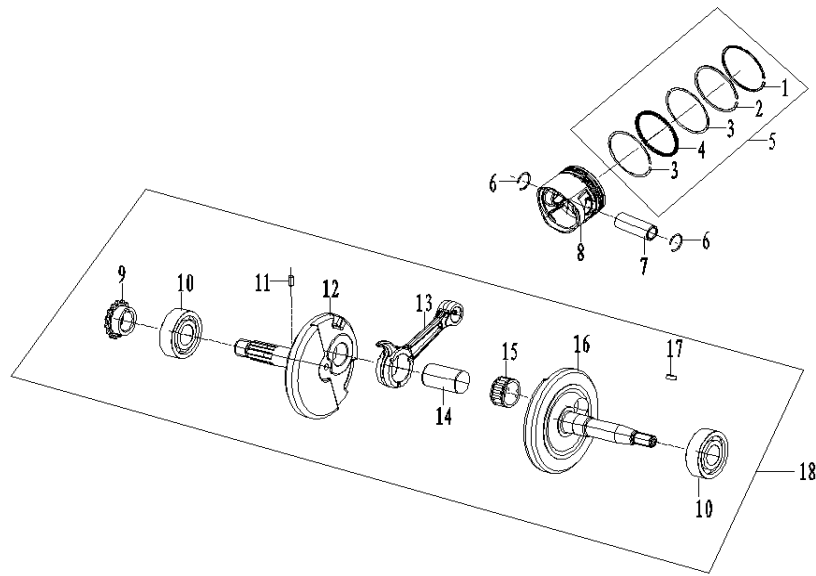
NO.	ICEBEAR PART NO.	FACTORY PART NO.	CHINESE NAME	English Name	QTY
1	PAD60-1-Q-001	100055589-0006	GB16674小盘螺栓M6×16(兰白锌)	Bolt, M6×16	2
2	PAD60-1-Q-002	100051010	ZL60轴承固定板	BeaRing, Dead Plate	1
3	PAD60-1-Q-003	100010688	轴承(16001)	Bearing, 16001	1
4	PAD60-1-Q-004	100106385	平垫圈(φ9.5×1×φ26.5)	Washer, φ9.5×1×φ26.5	1
5	PAD60-1-Q-005	100106522	平垫圈(φ20×0.5×φ27_工具钢)	Washer, φ20×0.5×φ27	1
6	PAD60-1-Q-006	100051395	ZL60机油泵内转子	Inner Rotor Oil Pump	1
7	PAD60-1-Q-007	100050604	ZL60机油泵油泵轴	Shaft Oil Pump	1
8	PAD60-1-Q-008	100051396	ZL60机油泵外转子	Outer Rotor Oil Pump	1
9	PAD60-1-Q-009	100104941	70机油过滤网组合	Strainer Oil Filter	1
10	PAD60-1-Q-010	100101061	轴承(HK15×21×12 滚针)	Needle BeRing, (Hk15×21×12)	1
11	PAD60-1-Q-011	100010670	轴承(6004)	Bearing, 6004	1
12	PAD60-1-Q-012	100102293-0012	ZL60左曲轴箱组合(大挂_抛丸钝化)	Left Crankcase Block	1
13	PAD60-1-Q-013	100050603	ZL60挂机减震套	Absorber Sleeve	2
14	PAD60-1-Q-014	100104684	C135曲轴油封(20×30×5_氢化丁腈)	Oil Seal 20×30×5	1
15	PAD60-1-Q-015	100104774	C100定子盘油封(30×42×4.5 丁腈胶)	Oil Seal 30×42×4.5	1
16	PAD60-1-Q-016	100011171-0002	GB5783螺栓M6×12(兰白锌)	Bolt, M6×12	1
17	PAD60-1-Q-017	100103247	C100启动链轮定位板	Plate Start Clutch	1

右曲轴箱 RIGHT
CRANKCASE

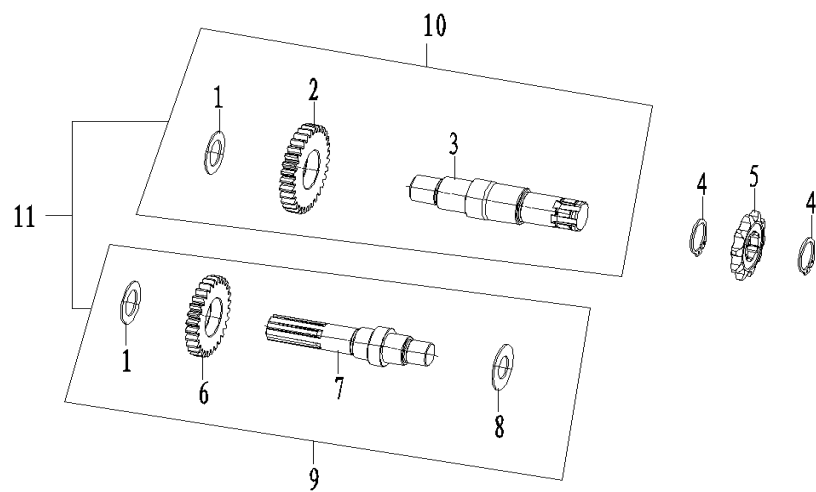


NO.	ICEBEAR PART NO.	FACTORY PART NO.	CHINESE NAME	English Name	QTY
1	PAD60-1-R-001	100055315	ZL60曲轴箱密封垫	Gasket Crankcase	1
2	PAD60-1-R-002	100100867	定位销 $\phi 8 \times 12 \times \phi 6.3$	Dowel Pin, $\phi 8 \times 12 \times \phi 6.3$	2
3	PAD60-1-R-003	100304622	轴承 (HK17 \times 23 \times 14 滚针)	Needle Bearing, (K25 \times 29 \times 13)	2
4	PAD60-1-R-004	100102973	C100通气管组件 (2#_复合层材料_ $\phi 10.5$ 卡簧2个)	Pipe Assy	1
5	PAD60-1-R-005	100102312-0012	ZL60右曲轴箱组合 (大挂_抛丸钝化)	Right Crankcase Block	1
6	PAD60-1-R-006	100050603	ZL60挂机减震套	Absorber Sleeve	2
7	PAD60-1-R-007	100011540-0007	GB16674小盘螺栓 M6 \times 50 (兰白锌)	Bolt, M6 \times 50	2
8	PAD60-1-R-008	100011539-0001	GB16674小盘螺栓 M6 \times 45 (兰白锌)	Bolt, M6 \times 45	1
9	PAD60-1-R-009	100011538-0003	GB16674小盘螺栓 M6 \times 40 (兰白锌)	Bolt, M6 \times 40	3
10	PAD60-1-R-010	100106543	平垫圈 ($\phi 8 \times 1 \times \phi 16$)	Washer, $\phi 8 \times 1 \times \phi 16$	1
11	PAD60-1-R-011	100100454-0007	CG125D-E右盖油道螺栓 M8 \times 12 \times 1 (兰白锌)	Bolt, M8 \times 12 \times 1	1

曲轴连杆部件/活
塞 CRANKSHAFT
CONNECTING-ROD
ASSY/PISTON

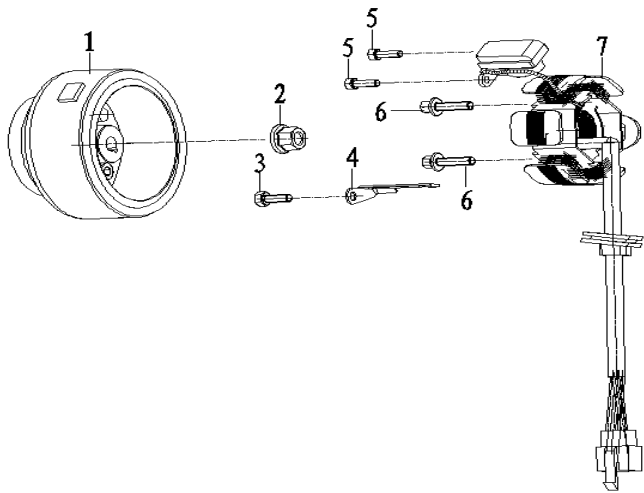


NO.	ICEBEAR PART NO.	FACTORY PART NO.	CHINESE NAME	English Name	QTY
1	PAD60-1-S-001	100052237	ZL60活塞环 (一)	Piston Ring, 1	1
2	PAD60-1-S-002	100052238	ZL60活塞环 (二)	Piston Ring, 2	1
3	PAD60-1-S-003	100052236	ZL60活塞衬环	Piston Ring	2
4	PAD60-1-S-004	100052235	ZL60活塞油环	Oil Ring, Assy	1
5	PAD60-1-S-005	100050605	ZL60活塞环总 成	Piston Ring, Comp	1
6	PAD60-1-S-006	100100580	70活塞销挡圈	Check Ring Piston Pin	2
7	PAD60-1-S-007	100050607	ZL60活塞销	Pin, Piston	1
8	PAD60-1-S-008	100050606	ZL60活塞	Piston	1
9	PAD60-1-S-009	100051573	ZL60正时主动 链轮	Hub Dump Chain Sprocket	1
10	PAD60-1-S-010	100100986	轴承 (6203 NTN)	BearRing, (6203)	2
11	PAD60-1-S-011	100100896	圆柱销 $\phi 4 \times$ 7.7	Pin, $\phi 4 \times 7.7$	1
12	PAD60-1-S-012	100051567	ZL60曲轴左曲 柄	Left Crank	1
13	PAD60-1-S-013	100051569	ZL60曲轴连杆	Connecting Rod	1
14	PAD60-1-S-014	100051568	ZL60曲轴曲柄 销	Pin, Piston	1
15	PAD60-1-S-015	100052644	轴承 (23.8×19 ×11.8 滚针)	Quill Roller	1
16	PAD60-1-S-016	100051570	ZL60曲轴右曲 柄	Right Crank	1
17	PAD60-1-S-017	100051578	ZL60半圆键	Woodruff Key	1
18	PAD60-1-S-018	100051394	ZL60曲轴连杆 部件	Crankshaft Connecting-Rod Assy	1



主副轴组合
TRANSMISSION
MAIN, COUNTER
SHAFT

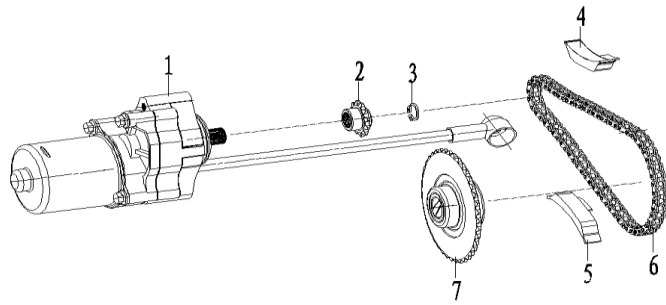
NO.	ICEBEAR PART NO.	FACTORY PART NO.	CHINESE NAME	English Name	QTY
1	PAD60-1-T-001	100056487	平垫圈(φ 17.1 × 1 × φ 28)	Flat Washer, φ 17.1 × 1 × φ 28	2
2	PAD60-1-T-002	100056379	ZL60副轴齿轮	Countershaft Gear	1
3	PAD60-1-T-003	100056380	ZL60副轴芯轴	Countershaft Dabber	1
4	PAD60-1-T-004	100033013	GB894. 2挡圈20	Retaining Ring, 20	2
5	PAD60-1-T-005	100055325	ZL60主动链轮(420.10)	Drive Sprocket	1
6	PAD60-1-T-006	100056383	ZL60主轴齿轮	Principal Axis Gear	1
7	PAD60-1-T-007	100056382	ZL60主轴芯轴	Principal Axis Dabber	1
8	PAD60-1-T-008	100106419	平垫圈(φ 15.2 × 1 × φ 30_弹簧钢)	Washer, φ 15.2 × 1 × φ 30	1
9	PAD60-1-T-009	100056381	ZL60主轴组合	Principal Axis Combination	1
10	PAD60-1-T-010	100056384	ZL60副轴组合	Countershaft Group	1
11	PAD60-1-T-011	100055326	ZL60主副轴组合	Transmission Main Counter	1



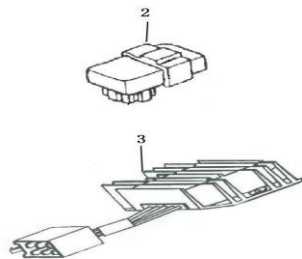
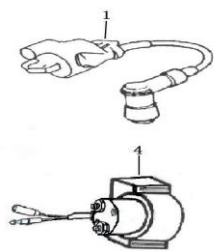
磁电机总成
MAGNETO COMP

NO.	ICEBEAR PART NO.	FACTORY PART NO.	CHINESE NAME	English Name	QTY
1	PAD60-1-U-001	100055323	ZL60磁电机转子组合(12V6极低磁钢)	Rotor Assy Magneto	1
2	PAD60-1-U-002	100033064-0001	GB6177.1螺母 M10×1.25(彩锌) ML35 P	Nut, M10×1.25	1
3	PAD60-1-U-003	100011171-0002	GB5783螺栓M6×12(兰白锌)	Bolt, M6×12	1
4	PAD60-1-U-004	100206187	BK70磁电机线夹	Fixing Plate Magneto Cable	1
5	PAD60-1-U-005	100011168-0003	GB5783螺栓M5×12(兰白锌)	Bolt, M5×12	2
6	PAD60-1-U-006	100011531-0007	GB16674小盘螺栓M6×18(兰白锌)	Bolt, M6×18	2
7	PAD60-1-U-007	100055324-0001	ZL60磁电机定子组合(12V6极_全波交流_接口A90 L:340)	Stator Assy Magneto	1

电启动机构
ELECTRIC
STARTING
MECHANISM



NO.	ICEBEAR PART NO.	FACTORY PART NO.	CHINESE NAME	English Name	QTY
1	PAD60-1-V-001	100055322-0001	ZL60启动电机 (单线_圆形 600 8801)	Starting Motor Assy	1
2	PAD60-1-V-002	100055321	ZL60启动电机 小链轮	Gasket Cylinder Head Upper	1
3	PAD60-1-V-003	100033003	GB894.1挡圈 11(轴径11_内 径10.2)	Retaining Ring, 11	1
4	PAD60-1-V-004	100202750	BK70链条导板 组合	Assembly Guide Plate	1
5	PAD60-1-V-005	100202742	BK70链条护板 组合	Assembly Chain Protect Plate	1
6	PAD60-1-V-006	100055327	ZL60启动链条 组合(70节)	Starting Motor Drive Chain	1
7	PAD60-1-V-007	100051401	ZL60启动大链 轮组件(含油封 15×30×5)	Start Chain Wheel Assembly	1



电器件
ELECTRIC

NO.	ICEBEAR PART NO.	FACTORY PART NO.	CHINESE NAME	English Name	QTY
1	PAD60-1-W-001	100204256-0001	高压包 (MG01A L:500)	Ignition Coil	1
2	PAD60-1-W-002	100204310	点火器 (MD100)	C. D. I	1
3	PAD60-1-W-003	100205417	整流调压器 (MT12V8- ZS05I)	Rectifier	1
4	PAD60-1-W-004	100205381	继电器 (MQJ10- ZS01A)	Relay	1