

NO.	ICEBEAR PARTS NO.	Description	Chinese name	QTY
FIG.1 AIR CLEANER				
1	PBZ125-2-A-001	AIR CLEANER ASSY(125CC)	空气滤清器总成	1
2	PBZ125-2-A-002	BOLT	螺栓	1

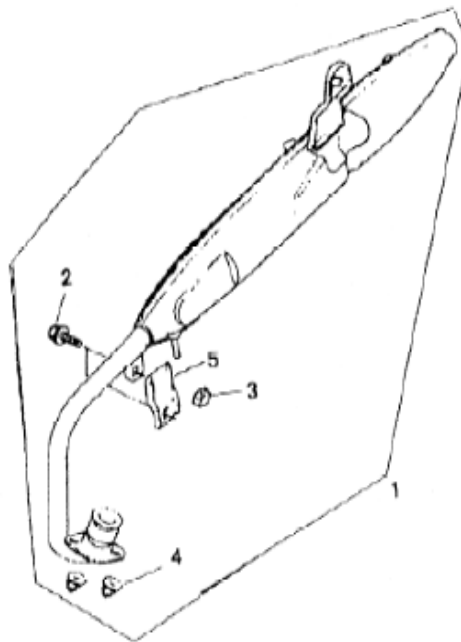


FIG.2 MUFFLER ASSY				
1	PBZ125-2-B-001	MUFFLER ASSY(125CC)	消声器组件	1
2	PBZ125-2-B-002	BOLT	螺栓	1
3	PBZ125-2-B-003	NUT	螺母	1
4	PBZ125-2-B-004	NUT	螺母	2
5	PBZ125-2-B-005	JOINT PLATE	消音器连接板	1

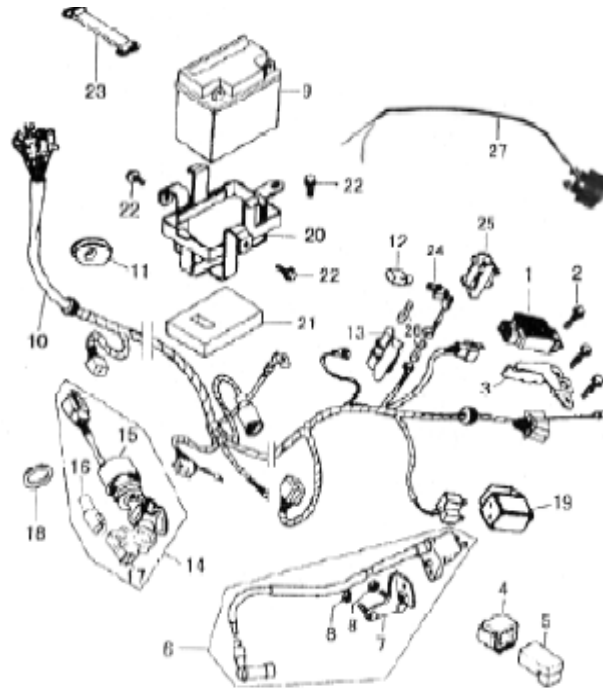


FIG.3 ELECTRICAL

1	PBZ125-2-C-001	RECTIFIER ASSY	稳压整流器总成	1
2	PBZ125-2-C-002	BOLT	螺栓	1
3	PBZ125-2-C-003	BRACKET RECTIFIER	稳压器支架	1
4	PBZ125-2-C-004	HOLDER CDI UNIT	CDI悬挂套	1
5	PBZ125-2-C-005	CDI UNIT	CDI元件	1
6	PBZ125-2-C-006	IGNITION COIL ASSY	点火线圈总成	1
7	PBZ125-2-C-007	IGNITION COIL HOLDER	点火线圈支架	1
8	PBZ125-2-C-008	NUT	螺母	1
9	PBZ125-2-C-009	BATTERY	蓄电池	1
10	PBZ125-2-C-010	WIRE HARNESS ASSY	导线束总成	1
11	PBZ125-2-C-011	CLAMP	导线束夹	1
12	PBZ125-2-C-012	RUBBER	橡胶套	1
13	PBZ125-2-C-013	FUSE BOX	保险丝盒	1
14	PBZ125-2-C-014	LOCK ASSY	套锁	1
15	PBZ125-2-C-015	MAIN SWITCH	电锁开关	1
16	PBZ125-2-C-016	LOCK STEERING	车头锁	1
17	PBZ125-2-C-017	SEAT LOCK	坐垫锁	1
18	PBZ125-2-C-018	WASHER	大垫圈	1
19	PBZ125-2-C-019	RELAY TURN SIGNAL	闪光器	1
20	PBZ125-2-C-020	HOLDER BATTERY	蓄电池支架	1
22	PBZ125-2-C-021	BOLT	螺栓	3
23	PBZ125-2-C-022	BAND BATTERY	蓄电池橡胶带	1
27	PBZ125-2-C-023	RELAY ASSY,ELEC.START MODEL	启动继电器	1

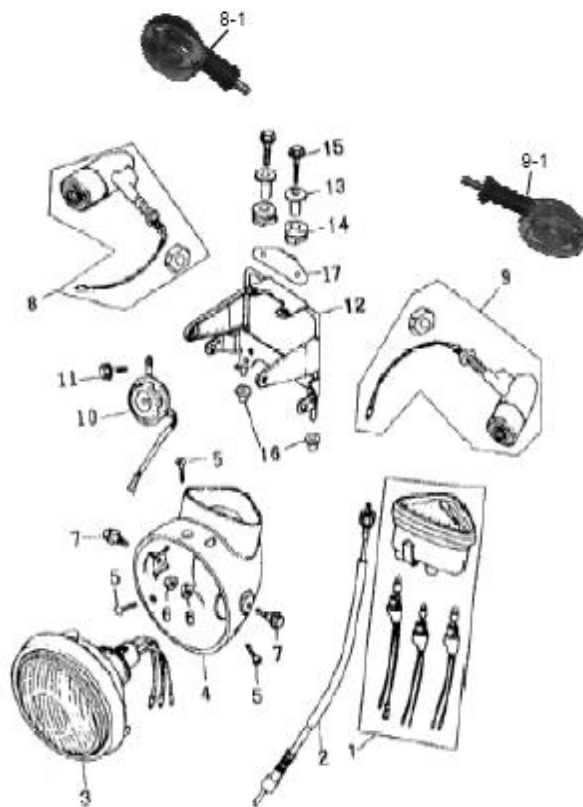


FIG.4 SPEEDOMETER

1	PBZ125-2-D-001	SPEEDOMETER(125CC)	车速里程表	1
2	PBZ125-2-D-002	CABLE SPEEDOMETER	速度表软轴	1
3	PBZ125-2-D-003	HEAD LAMP ASSY	前大灯总成	1
4	PBZ125-2-D-004	HOUSING HEAD ASSY	前大灯灯罩	1
5	PBZ125-2-D-005	SCREW	十字槽半沉头螺钉	3
6	PBZ125-2-D-006	NUT	螺母	2
7	PBZ125-2-D-007	BOLT	螺栓	2
8	PBZ125-2-D-008	LAMP ASSY TURN SIGNAL RH	右转向灯总成	2
9	PBZ125-2-D-009	LAMP ASSY TURN SIGNAL LH	左转向灯总成	2
10	PBZ125-2-D-010	HORN ASSY	喇叭	1
11	PBZ125-2-D-011	BOLT	螺栓	1
12	PBZ125-2-D-012	BRACKET COMP HEAD LAMP	前大灯支架组件	1
13	PBZ125-2-D-013	SPACER	衬套	2
14	PBZ125-2-D-014	RUBBER	胶套	2
15	PBZ125-2-D-015	BOLT ASSY	组合螺栓	2
16	PBZ125-2-D-016	RUBBER	橡胶套	2
17	PBZ125-2-D-017	EMBLEM	商标装饰牌	1



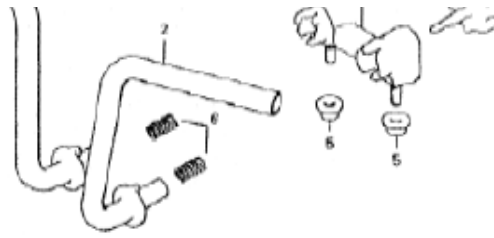


FIG.5 GRIP

1	PBZ125-2-E-001	HANDLE BAR RH	右方向把手组件	1
2	PBZ125-2-E-002	HANDLE BAR LH	左方向把手组件	1
3	PBZ125-2-E-003	HANDLE BAR SEAT ASSY	方向把座组件	1
4	PBZ125-2-E-004	HANDLE BAR LEVER LOCK	方向把锁紧手柄	2
5	PBZ125-2-E-005	NUT	螺母	2
6	PBZ125-2-E-006	SPRING	弹簧	2

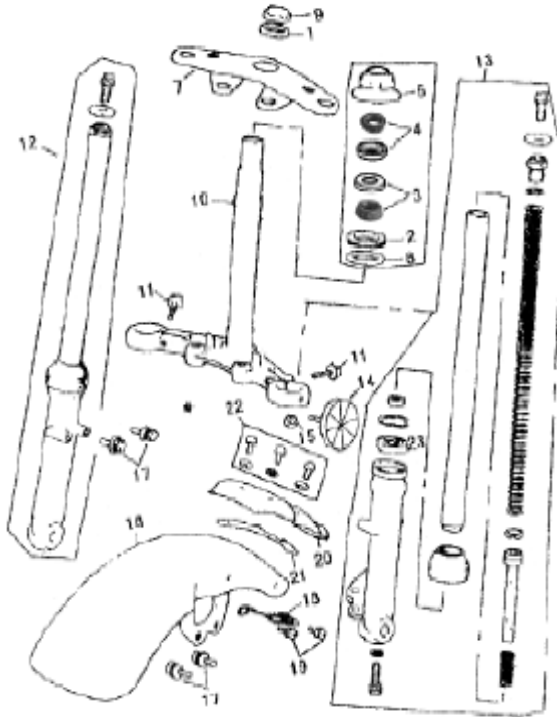


FIG.6 FRONT FORK

1	PBZ125-2-F-001	WASHER	垫圈	1
2	PBZ125-2-F-002	SEAL	密封圈	1
3	PBZ125-2-F-003	LOWER BEARING	下轴承	1
4	PBZ125-2-F-004	UPPER BEARING	上轴承	1
5	PBZ125-2-F-005	DUST SEAL	上部转向防尘圈	1
6	PBZ125-2-F-006	STEERING NUT	转向轴螺母	1
7	PBZ125-2-F-007	STEERING HEAD	上联板组件	1
8	PBZ125-2-F-008	GASKET	垫片	1

9	PBZ125-2-F-009	STEERING NUT	方向柱螺母	1
10	PBZ125-2-F-010	STEERING STEM	下联板组件	1
11	PBZ125-2-F-011	BOLT	螺栓	2
12	PBZ125-2-F-012	SHOCK ABSORBER FRONT RH	前右减震器组件	1
13	PBZ125-2-F-013	SHOCK ABSORBER FRONT LH	前左减震器组件	1
14	PBZ125-2-F-014	REFLECTOR	边缘反射镜	2
15	PBZ125-2-F-015	NUT	螺母	2
16	PBZ125-2-F-016	FRONT FENDER CHROME	前挡泥板 镀铬	1
17	PBZ125-2-F-017	BOLT	螺栓	4
18	PBZ125-2-F-018	CABLE CLIP	钢索夹	1
19	PBZ125-2-F-019	SCREW ASSY	螺钉组合件	3
20	PBZ125-2-F-020	REAR PART FRONT FENDER CHROME	前挡泥板后部 镀铬	1
21	PBZ125-2-F-021	DAMPER	衬板	1
22	PBZ125-2-F-022	SCREW ASSY	螺钉组合件	3
23	PBZ125-2-F-023	OIL SEAL	油封	2

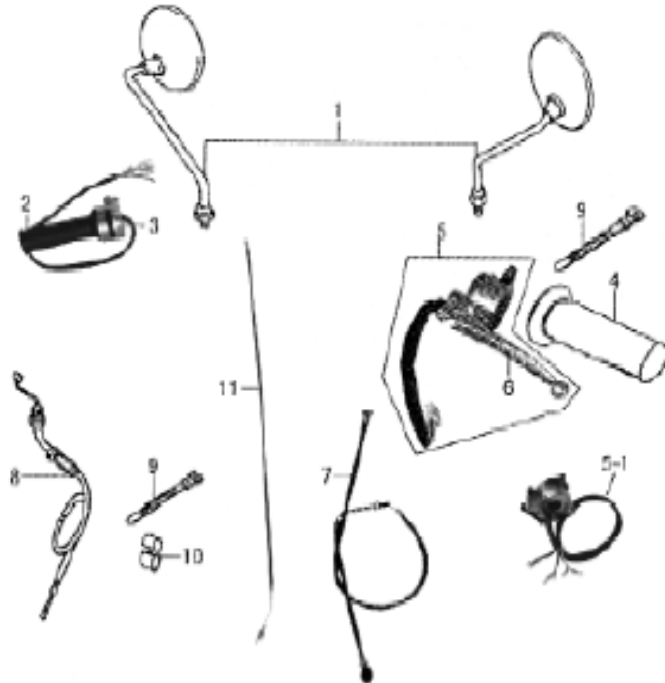


FIG.7 HANDLE SWITCH				
1	PBZ125-2G-001	REARVIEW MIRROR	后视镜组件	1
2	PBZ125-2G-002	GRIP THROTTLE	油门手把	1
3	PBZ125-2G-003	RIGHT HANDLE SWITCH ASSY	右把手开关组	1
4	PBZ125-2G-004	GRIP LH	左手把	1
5	PBZ125-2G-005	LEFT HANDLE SWITCH ASSY (MANU)	离合器及左开关组件	1
5-1	PBZ125-2G-006	LEFT HANDLE SWITCH ASSY (SENI-A)	风门及左开关组件	1
6	PBZ125-2G-007	HAND GRIP CLUTCH (MANUAL CLUT)	离合器手柄	1
7	PBZ125-2G-008	CLUTCH THROTTLE ASSY (MANUAL)	离合器钢索组件	1
8	PBZ125-2G-009	CABLE THROTTLE	油门钢索组件	1
9	PBZ125-2G-010	BAND	导线束固定带	4
10	PBZ125-2G-011	CLIP	线夹	1
11	PBZ125-2G-012	CABLE CHOKE	风门线	1

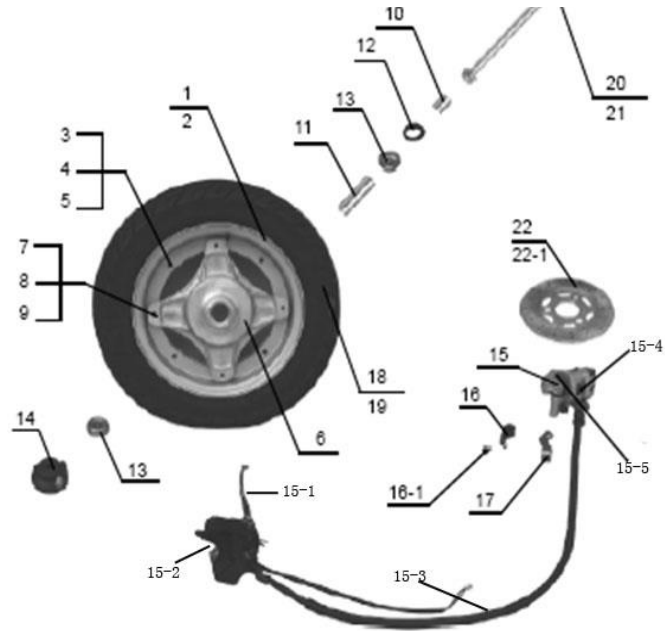


FIG.8 FORNT WHEEL

1	PBZ125-2-H-001	RIM RH	右轮圈	1
2	PBZ125-2-H-002	RIM RH	轮辋 (右)	1
3	PBZ125-2-H-003	BOLT	螺栓	4
4	PBZ125-2-H-004	WASHER	垫圈	4
5	PBZ125-2-H-005	NUT	螺母	4
6	PBZ125-2-H-006	DRUM FRONT HUB	前轮鼓	1
7	PBZ125-2-H-007	BOLT	螺栓	4
8	PBZ125-2-H-008	SPRING WASHER	弹簧垫圈	4
9	PBZ125-2-H-009	NUT	螺母	4
10	PBZ125-2-H-010	FRONT WHEEL (L) BUSH	前轮左衬套	1
11	PBZ125-2-H-011	BUSHING	前轮轴承衬套	1
12	PBZ125-2-H-012	OIL SEAL	前轮密封圈	1
13	PBZ125-2-H-013	BEARING	前轮轴承	2
14	PBZ125-2-H-014	GEAR BOX ASSY,SPEEDOMETER	变速器总成	1
15	PBZ125-2-H-015	FRONT BRAKE ASSY	前液压制动器总成	1
15-1	PBZ125-2-H-016	Master cylinder	碟刹上泵	1
15-2	PBZ125-2-H-017	brake lever	碟刹手柄	1
15-3	PBZ125-2-H-018	Brake Line	碟刹油管	1
15-4	PBZ125-2-H-019	Brake Caliper	碟刹下泵	1
15-5	PBZ125-2-H-020	Brake Pad	摩擦片	2
16	PBZ125-2-H-021	CLIP	油管夹	1
16-1	PBZ125-2-H-022	BOLT	螺栓	1
17	PBZ125-2-H-023	CLIP	油管固定夹	1
18	PBZ125-2-H-024	TIRE	前轮外胎	1
19	PBZ125-2-H-025	TUBE INNER	前轮内胎	1
20	PBZ125-2-H-026	AXLE FRONT WHEEL	前轮轴	1
21	PBZ125-2-H-027	SELF-LOCKING NUT	自锁螺母	1
22	PBZ125-2-H-028	BRAKE DISC	前刹车盘	1
22-1	PBZ125-2-H-029	BOLT	前刹车安装螺栓	3

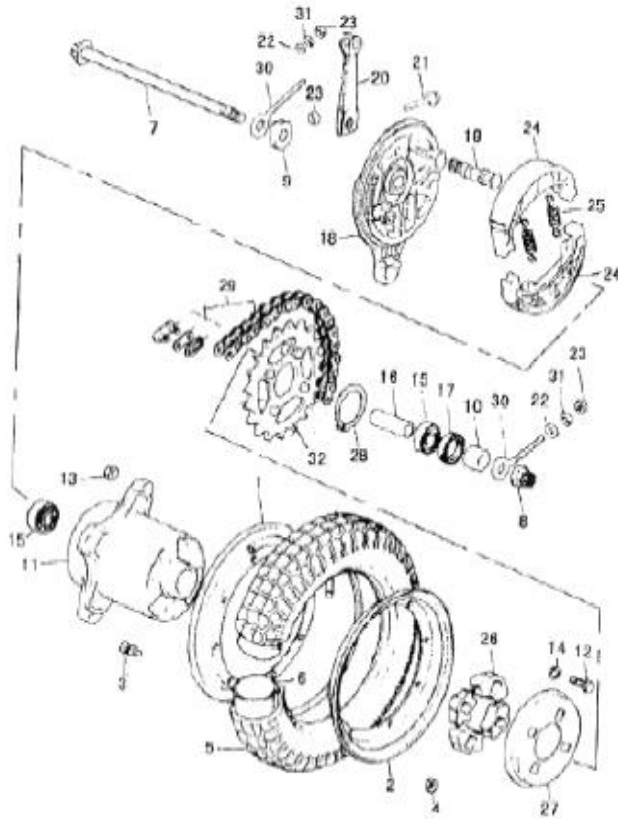


FIG.9 REAR WHEEL

1	PBZ125-2-I-001	RIM LH	左轮圈	1
2	PBZ125-2-I-002	RIM LH	轮辋 (左)	1
3	PBZ125-2-I-003	BOLT	螺栓	4
4	PBZ125-2-I-004	NUT	螺母	4
5	PBZ125-2-I-005	TIRE	外胎	1
6	PBZ125-2-I-006	TUBE INNER	内胎	1
7	PBZ125-2-I-007	AXLE REAR	后轮轴	1
8	PBZ125-2-I-008	NUT	螺母	1
9	PBZ125-2-I-009	PUSH RING	压圈	1
10	PBZ125-2-I-010	PUSH RING	压圈	1
11	PBZ125-2-I-011	DRUM REAR HUB	后制动鼓	1
12	PBZ125-2-I-012	BOLT	螺栓	1
13	PBZ125-2-I-013	NUT	螺母	4
14	PBZ125-2-I-014	LOCK WASHER	轻型弹簧垫圈	4
15	PBZ125-2-I-015	BEARING	轴承	2
16	PBZ125-2-I-016	BUSHING	衬管	1
17	PBZ125-2-I-017	OIL SEAL	密封皮碗	1
18	PBZ125-2-I-018	PANEL REAR HUB	后制动鼓盖	1
19	PBZ125-2-I-019	CAM BRAKE	后制动凸轮轴	1

20	PBZ125-2-I-020	LEVEL BRAKE CAM	后制动摇臂	1
21	PBZ125-2-I-021	BOLT	螺栓	1
22	PBZ125-2-I-022	WASHER	垫圈	2
23	PBZ125-2-I-023	NUT	螺母	1
24	PBZ125-2-I-024	SHOE BRAKE	制动块组件	2
25	PBZ125-2-I-025	SPRING	制动弹簧	2
26	PBZ125-2-I-026	CUSHION	橡胶块	4
27	PBZ125-2-I-027	DUST SEAL	防尘盖	1
28	PBZ125-2-I-028	THRUST WASHER	挡圈	1
29	PBZ125-2-I-029	CHAIN 86 JOINTS	链条	1
30	PBZ125-2-I-030	ADJUSTER CHAIN	轮距调整接头	1
31	PBZ125-2-I-031	SPRING WASHER	轻型弹簧垫圈	2
32-1	PBZ125-2-I-032	SPROCKET REAR (Z=36)	大链轮	1

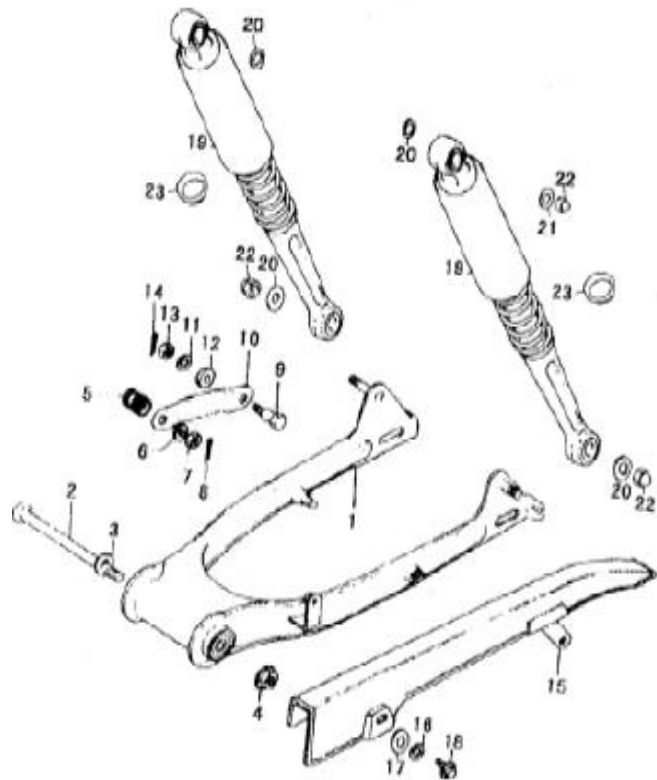


FIG.10 SWINGING ARM				
1	PBZ125-2-J-001	SWING ARM COMP	后叉组件	1
2	PBZ125-2-J-002	SHAFT PIVOT	后叉轴	1
3	PBZ125-2-J-003	WASHER	垫圈	1
4	PBZ125-2-J-004	NUT	螺母	3
5	PBZ125-2-J-005	SPRING	弹簧	1
6	PBZ125-2-J-006	WASHER	垫圈	1
7	PBZ125-2-J-007	NUT	螺母	1
8	PBZ125-2-J-008	COTTER PIN	开口销	1
9	PBZ125-2-J-009	BOLT	螺栓	1
10	PBZ125-2-J-010	LINKING PLATE	连接板	1
11	PBZ125-2-J-011	SPRING WASHER	弹簧垫圈	1
12	PBZ125-2-J-012	WASHER	垫圈	1
13	PBZ125-2-J-013	NUT	螺母	1
14	PBZ125-2-J-014	COTTER PIN	开口销	1

15	PBZ125-2-J-015	CHAIN CASE	后链罩	1
16	PBZ125-2-J-016	DAMPER	减震垫	1
17	PBZ125-2-J-017	WASHER	垫圈	1
18	PBZ125-2-J-018	BOLT	螺栓	1
19	PBZ125-2-J-019	SHOCK ABSORBER ASSY,REAR	后减震总成(加粗可调节)	2
20	PBZ125-2-J-020	WASHER	垫圈	4
21	PBZ125-2-J-021	WASHER	垫圈	1
22	PBZ125-2-J-022	NUT	螺母	4
23	PBZ125-2-J-023	OIL SEAL	后减油封	2

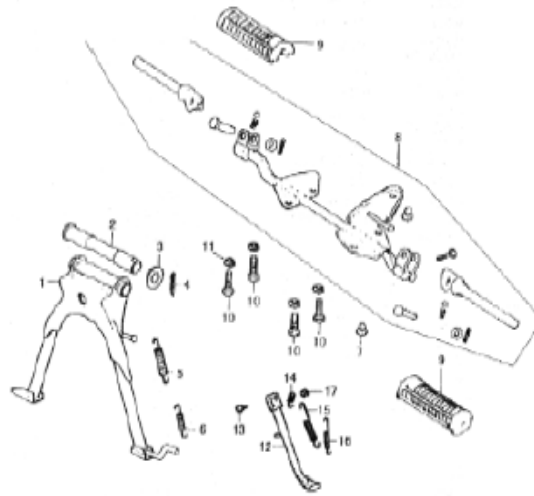


FIG.11 STAND				
1	PBZ125-2-K-001	STAND CENTER	中撑组件	1
2	PBZ125-2-K-002	SHAFT CENTER STAND	中撑轴	1
3	PBZ125-2-K-003	WASHER	垫圈	2
4	PBZ125-2-K-004	COTTER PIN	开口销	1
5	PBZ125-2-K-005	SPRING CENTER STAND	中撑弹簧	1
6	PBZ125-2-K-006	INNER SPRING	中撑内弹簧	1
7	PBZ125-2-K-007	CUSHION STAND CENTER	中撑缓冲垫	1
8	PBZ125-2-K-008	FOOTREST HOLDER ASSY	前脚踏支架组件	1
9	PBZ125-2-K-009	RUBBER FOOTREST	前脚踏皮	2
10	PBZ125-2-K-010	BOLT	螺栓	4
11	PBZ125-2-K-011	SPRING WASHER	弹簧垫圈	4
12	PBZ125-2-K-012	STAND PROP	单撑组件	1
13	PBZ125-2-K-013	BOLT	螺栓	1
14	PBZ125-2-K-014	HOOK	挂片	1
15	PBZ125-2-K-015	SPRING	拉簧I	1
16	PBZ125-2-K-016	SPRING	拉簧II	1
17	PBZ125-2-K-017	NUT	螺母	1

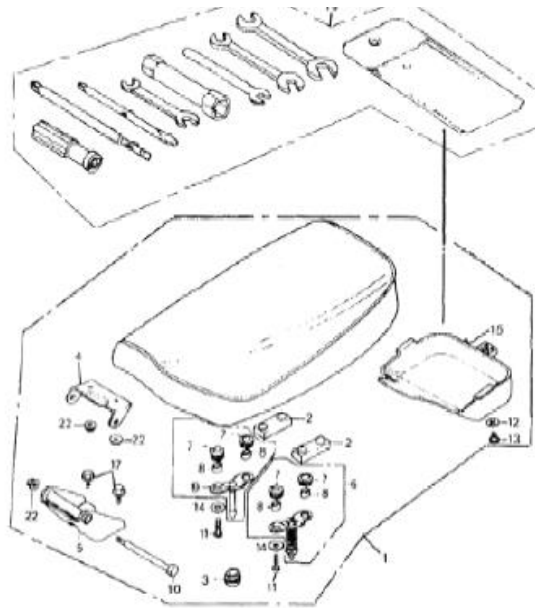


FIG.12 SEAT

1	PBZ125-2-L-001	SEAT ASSY	鞍座总成	1
11	PBZ125-2-L-002	BOLT	螺栓	4
12	PBZ125-2-L-003	CLAMP	弹簧卡	1
13	PBZ125-2-L-004	SCREW	螺钉	1
14	PBZ125-2-L-005	WASHER	大垫圈	4
15	PBZ125-2-L-006	HOLDER TOOL	工具箱	1
16	PBZ125-2-L-007	TOOL SET	工具总成	1
17	PBZ125-2-L-008	BOLT	螺柱	2

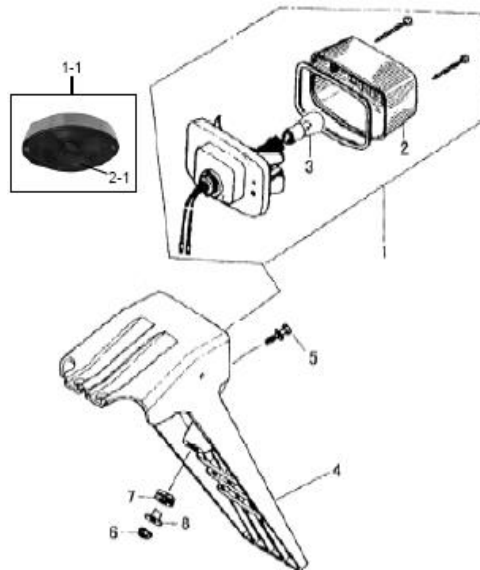


FIG.13 LAMP

1-1	PBZ125-2-M-001	TAIL LAMP	尾灯总成	1
3	PBZ125-2-M-002	BULB	尾(刹车)灯泡	1
4	PBZ125-2-M-003	FENDER REAR CHROME	后挡泥板 镀铬	1
5	PBZ125-2-M-004	BOLT	螺栓	1

6	PBZ125-2-M-005	NUT	螺母	1
7	PBZ125-2-M-006	RING RUBBER	橡胶垫	1
8	PBZ125-2-M-007	SPACER	衬套	1

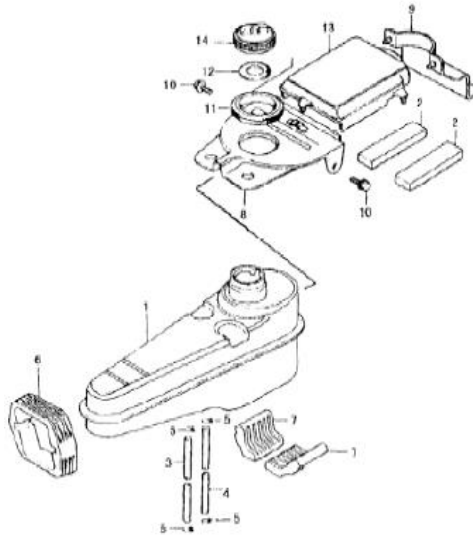
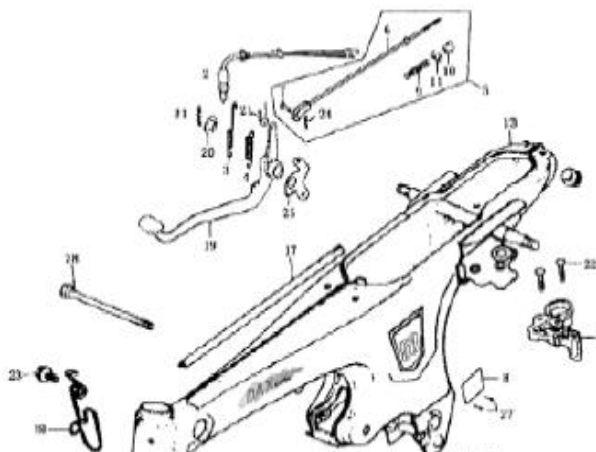


FIG.14 FUEL TANK				
1	PBZ125-2-N-001	FUEL TANK ASSY	油箱组件	1
3	PBZ125-2-N-002	HOSE 1	燃油管1	1
4	PBZ125-2-N-003	HOSE 2	燃油管2	1
5	PBZ125-2-N-004	CLIP	紧圈	4
6	PBZ125-2-N-005	RUBBER PAD	油箱前部缓冲胶圈	1
7	PBZ125-2-N-006	RUBBER PAD	油箱下部缓冲胶圈	2
8	PBZ125-2-N-007	FULE TANK COVER	油箱盖板	1
9	PBZ125-2-N-008	RUBBER	橡胶套	1
10	PBZ125-2-N-009	BOLT	螺栓	1
11	PBZ125-2-N-010	RUBBER RING	橡胶圈	1
12	PBZ125-2-N-011	SEAL RING	油箱盖密封垫	1
14	PBZ125-2-N-012	CAP FUEL TANK	油箱盖	1



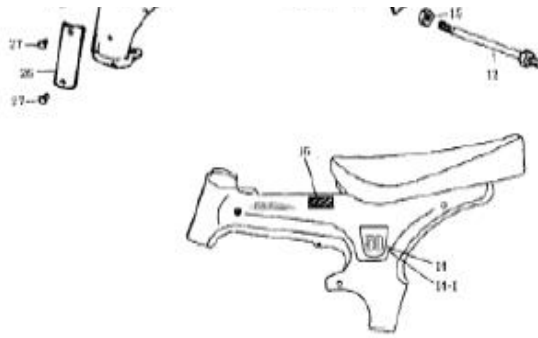


FIG. 15 FRAME-EMBLEM

1	PBZ125-2-O-001	SEAT LOCK	座垫锁	1
2	PBZ125-2-O-002	BRAKE SWITCH	后刹开关	1
3	PBZ125-2-O-003	BRAKE SWITCH SPRING	后刹车开关弹簧	1
4	PBZ125-2-O-004	BRAKE RETURN SPRING	后制动回位弹簧	1
5	PBZ125-2-O-005	ROD BRAKE ASSY	后制动拉杆组件	1
6	PBZ125-2-O-006	ROD BRAKE	后制动拉杆	1
8	PBZ125-2-O-007	ANTI-TEMPERING PLATE	防改装标牌	1
9	PBZ125-2-O-008	SPRING	后制动拉杆调节弹簧	1
10	PBZ125-2-O-009	COTTER PIN	开口销	1
12	PBZ125-2-O-010	BOLT	螺栓	1
13	PBZ125-2-O-011	FRAME COMP	车架组件	1
14	PBZ125-2-O-012	EMBLEM (125CC)	车身贴花	2
15	PBZ125-2-O-013	NUT	螺母	2
16	PBZ125-2-O-014	WARNING EMBLEM	警告贴花	1
17	PBZ125-2-O-015	DECORATIION SET	装饰条	1
18	PBZ125-2-O-016	CLAMP	导线束夹	1
19	PBZ125-2-O-017	PEDAL BRAKE	制动脚踏组件	1
20	PBZ125-2-O-018	WASHER	垫圈	1
21	PBZ125-2-O-019	COTTER PIN	开口销	1
22	PBZ125-2-O-020	SCREW	螺钉	2
23	PBZ125-2-O-021	BOLT	螺栓	1
24	PBZ125-2-O-022	COTTER PIN	开口销	1
27	PBZ125-2-O-023	RIVET	铆钉	1
28	PBZ125-2-O-024	BOLT	螺栓	1

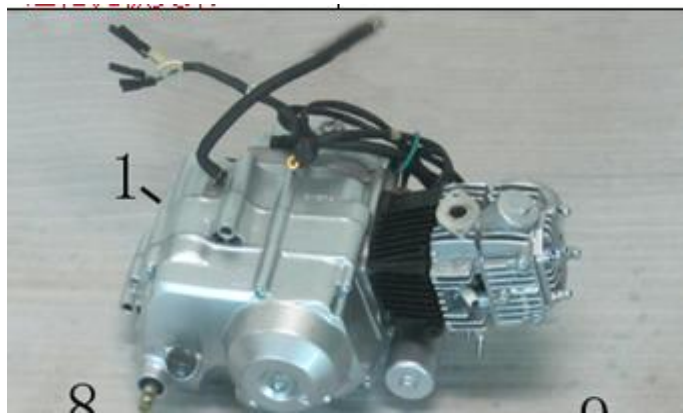


FIG.16 ENGINE

1	PBZ125-2-P-001	ENGINE	发动机	1
---	----------------	--------	-----	---

