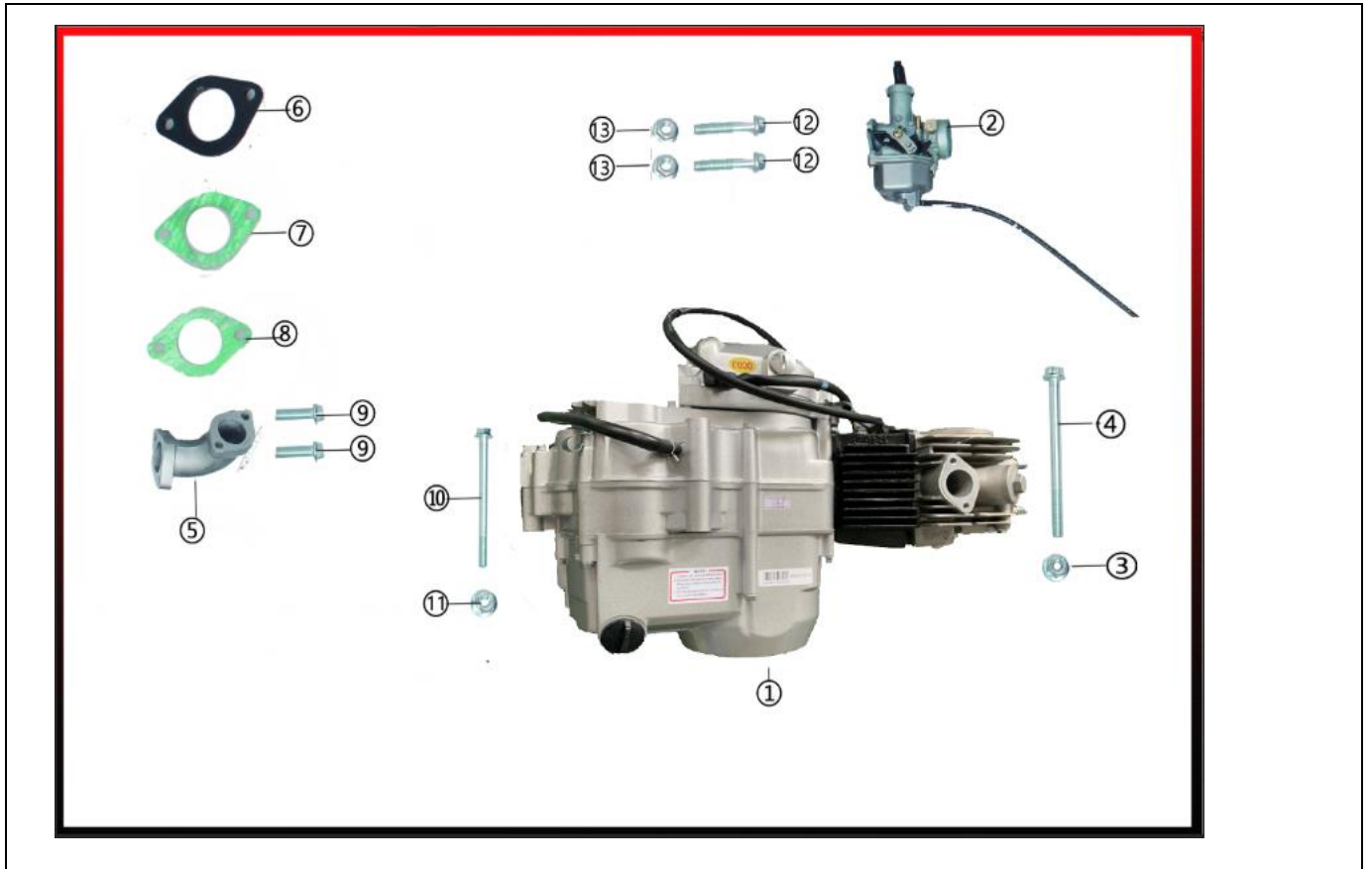
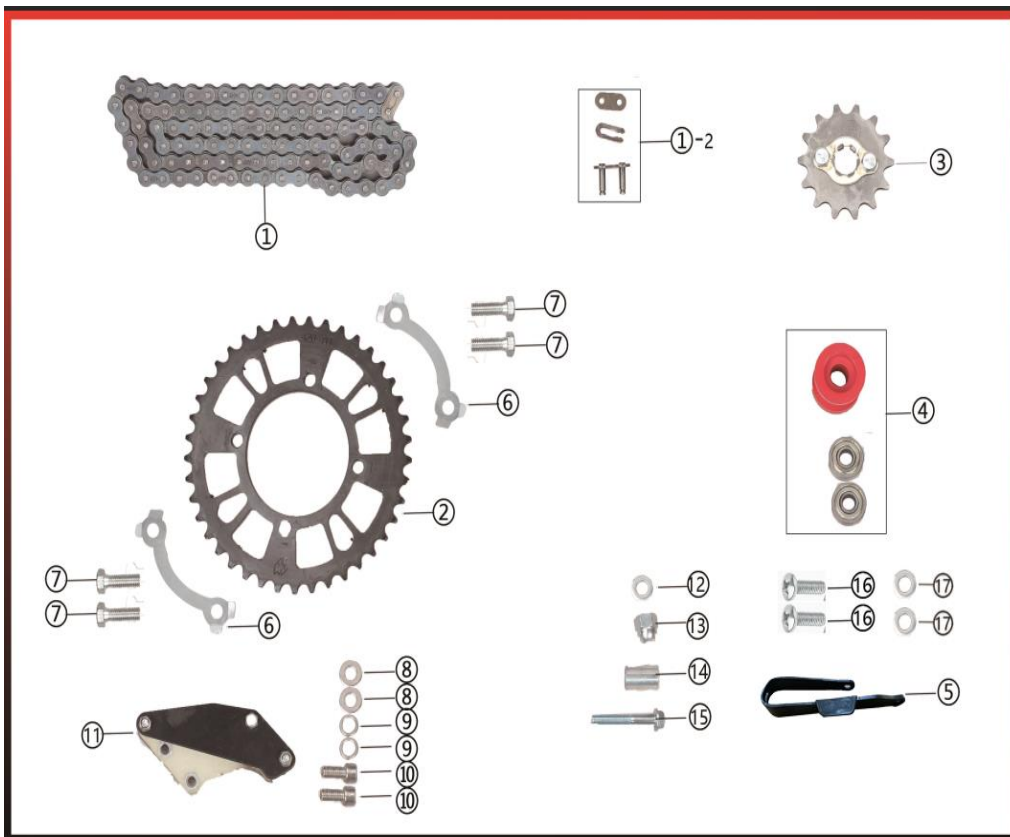




1、Suspension System					
NO.	ICEBEAR PART NO.	FACTORY PART NO.	CHINESE NAME	English Name	QTY
①	PAD125-1F-A-001	156010101L0	左前减震器	Up-side front suspenssion, Left	2
②	PAD125-1F-A-002	156010101R0	右前减震器	Up-side front suspenssion, Right	2
③	PAD125-1F-A-003	15601010200	后减震器	Rear shock	1
④	PAD125-1F-A-004	GB5787M104501	六角法兰面螺栓	Rolt, flanged	1
⑤	PAD125-1F-A-005	GB5787M10105501	六角法兰面螺栓	Rolt, flanged	1
⑥	PAD125-1F-A-006	GBT6187M101201	六角法兰面锁紧螺母	Nut, flanged locking	2

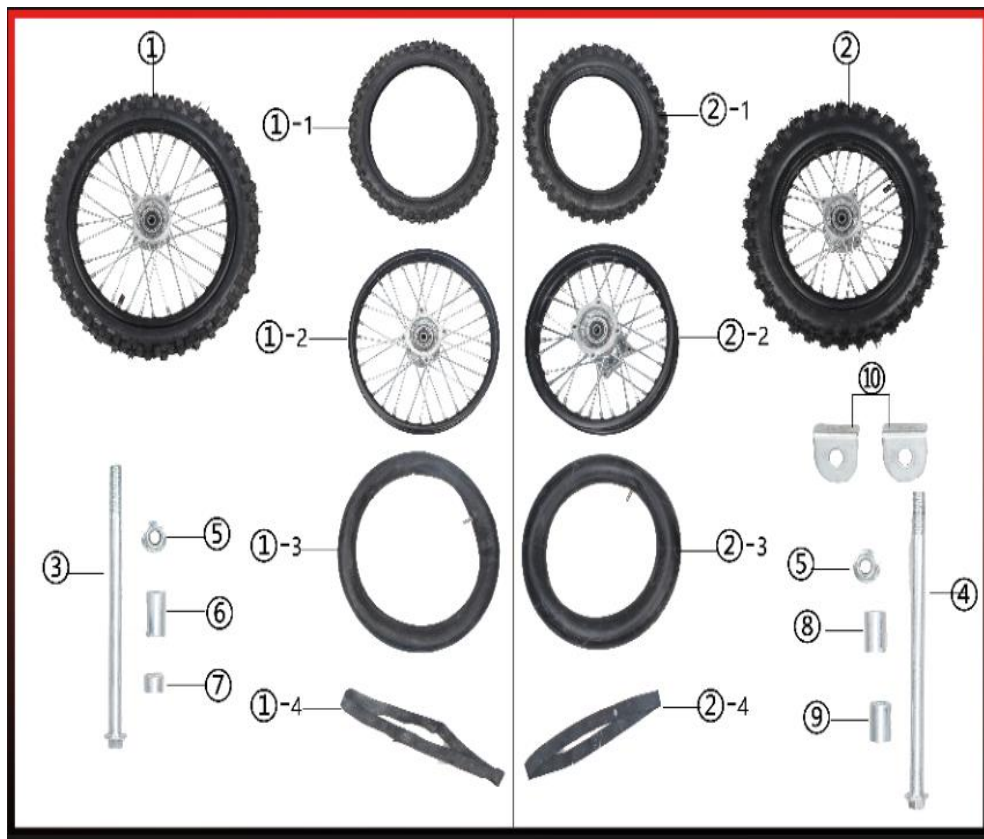


2、Engine System					
NO.	ICEBEAR PART NO.	FACTORY PART NO.	CHINESE NAME	English Name	QTY
①	PAD125-1F-B-001	15602010000	发动机总成	Engine assembly	1
②	PAD125-1F-B-002	15602020000	化油器	Carburetor	1
③	PAD125-1F-B-003	GBT6187M801	六角法兰面锁紧螺母	Nut, flanged locking	1
④	PAD125-1F-B-004	GB5787M811501	六角法兰面螺栓	Bolt flanged	1
⑤	PAD125-1F-B-005	15602010500	进气管	intake manifold	1
⑥	PAD125-1F-B-006	15602050000	隔热垫		1
⑦	PAD125-1F-B-007	15602050000	上密封纸垫	Insulation mat, Upper&Down seal	1
⑧	PAD125-1F-B-008	15602050000	下密封纸垫		1
⑨	PAD125-1F-B-009	GB5787M62001	六角法兰面螺栓	Bolt flanged	2
⑩	PAD125-1F-B-010	GB5787M810501	六角法兰面螺栓	Bolt flanged	1
⑪	PAD125-1F-B-011	GBT6187M801	六角法兰面锁紧螺母	Nut, flanged locking	1
⑫	PAD125-1F-B-012	GBT5782M62301	六角头螺栓	Bolt	1
⑬	PAD125-1F-B-013	GBT6177M601	六角法兰面自锁螺母	Nut, flanged locking	2



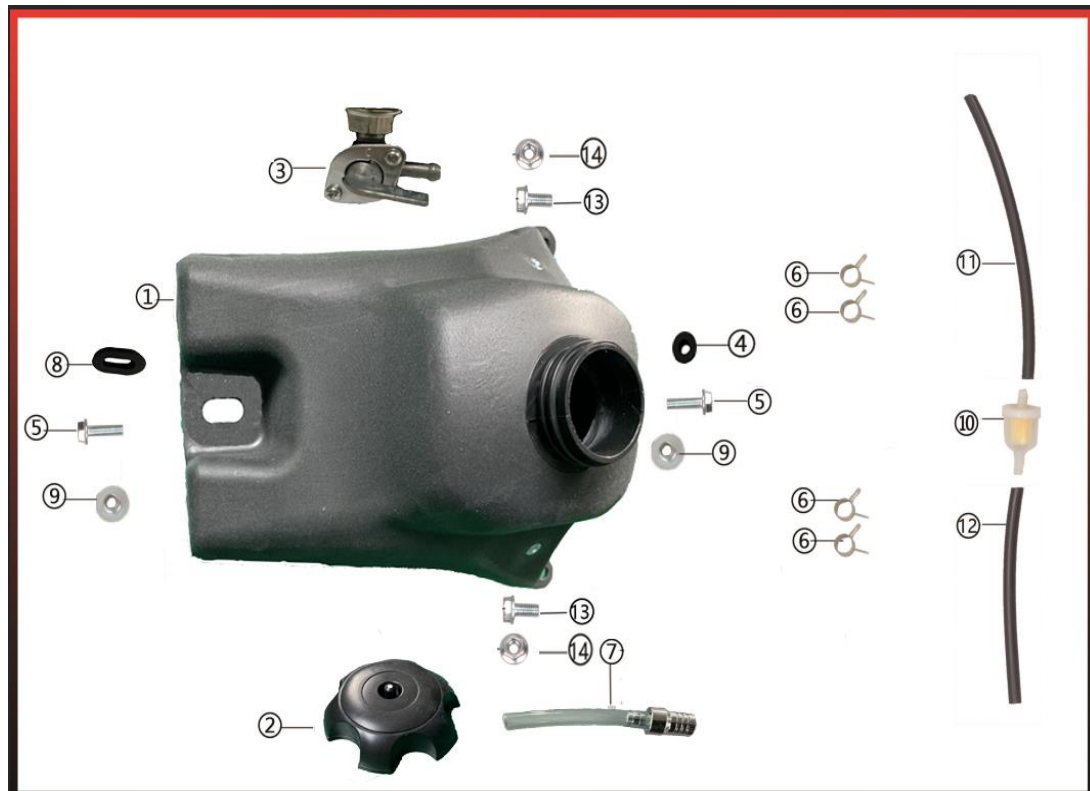
### 3、Transmission System

NO.	ICEBEAR PART NO.	FACTORY PART NO.	CHINESE NAME	English Name	QTY
①	PAD125-1F-C-001	15603070000	链条总成	Chain assembly	1
①-2	PAD125-1F-C-002	15603070200	连接片, 卡扣, 连接座	Connctor	1
②	PAD125-1F-C-003	15603010000	后链轮	Rear sprocket	1
③	PAD125-1F-C-004	15603030000	小链轮组件	Minor spocket assembly	1
④	PAD125-1F-C-005	15603040000	导链轮, 轴承	Chain roller assy	1
⑤	PAD125-1F-C-006	15603040001	导链套 (带挡板)	chain plate guide	1
⑥	PAD125-1F-C-007	15603010100	链轮锁片	Spocket lock plates	2
⑦	PAD125-1F-C-008	GBT5782M82501	六角头螺栓	Bolt	4
⑧	PAD125-1F-C-009	GBT97. 1801	平垫圈	Flat washer	2
⑨	PAD125-1F-C-010	GBT93801	弹垫圈	Lock washer	3
⑩	PAD125-1F-C-011	GBT70. 1M82001	内六角螺栓	Bolt	2
⑪	PAD125-1F-C-012	15603060000	挡链器	Chain guide	1
⑫	PAD125-1F-C-013	15603080000	隔套	Spacer	1
⑬	PAD125-1F-C-014	15603090000	球头螺母	Nut	1
⑭	PAD125-1F-C-015	15603040100	导链轮衬套	Chain roller spacer	1
⑮	PAD125-1F-C-016	GB5787M85501	六角法兰面螺栓	Bolt flanged	1
⑯	PAD125-1F-C-017	GB823-85	十字平头		2
⑰	PAD125-1F-C-018	GBT97. 1801	平垫圈	Flat washer	2



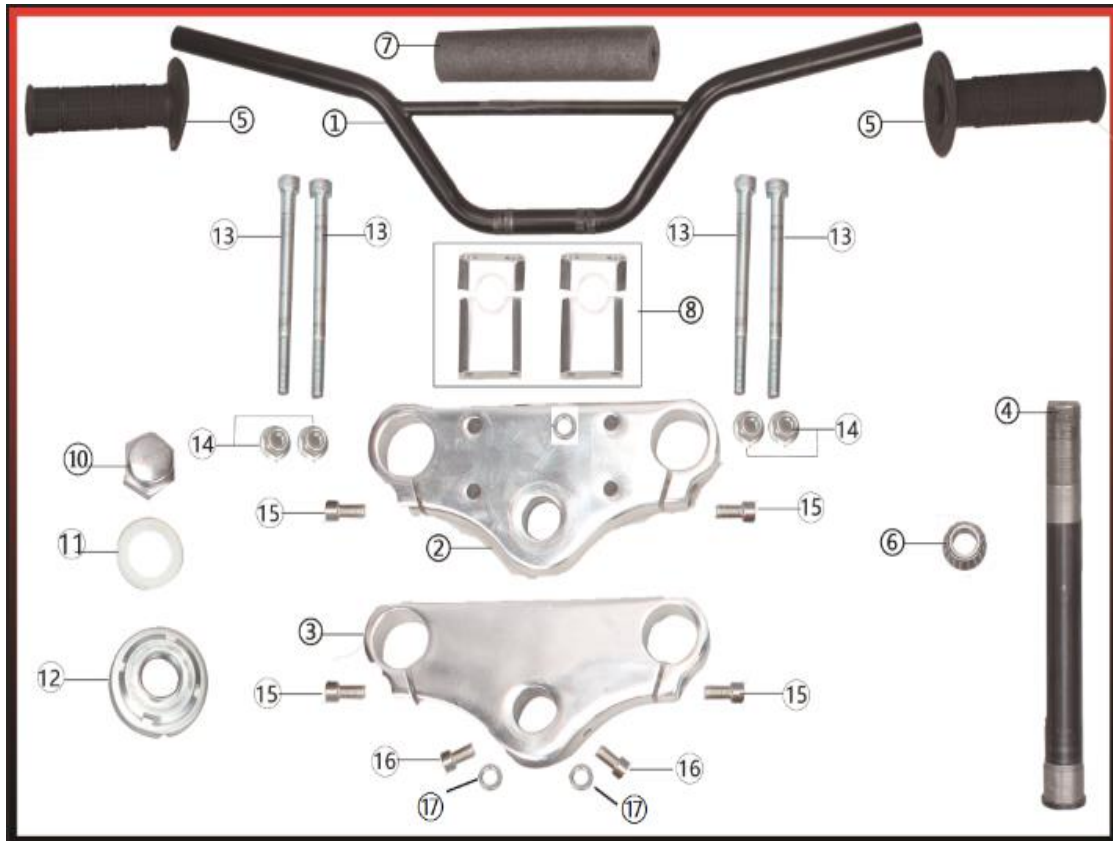
### 3-1、Transmission System Assembly

NO.	ICEBEAR PART NO.	FACTORY PART NO.	CHINESE NAME	English Name	QTY
①	PAD125-1F-D-001	15603080000	前轮辋总成	Rim assy front	1
①-1	PAD125-1F-D-002	15603080100	前轮外胎	Front tire	1
①-2	PAD125-1F-D-003	15603080200	前轮辋	Front rim	1
①-3	PAD125-1F-D-004	15603080300	前轮内胎	Front inner tube	1
①-4	PAD125-1F-D-005	15603080400	衬带	Protector band	1
②	PAD125-1F-D-006	15603090000	后轮辋总成	Rim assy. rear	1
②-1	PAD125-1F-D-007	15603090100	后轮外胎	Rear tire	1
②-2	PAD125-1F-D-008	15603090200	后轮辋	Rear rim	1
②-3	PAD125-1F-D-009	15603090300	后轮内胎	Front inner tube	1
②-4	PAD125-1F-D-010	15603090400	衬带	Protector band	1
③	PAD125-1F-D-011	15603100000	前轮轴	Front axle	1
④	PAD125-1F-D-012	15603110000	后轮轴	Rear axle	1
⑤	PAD125-1F-D-013	GBT6187M1201	六角法兰面锁紧螺母	Nut flanged locking	1
⑥	PAD125-1F-D-014	15603130000	前轮左轴套	Front axle spacer LH	1
⑦	PAD125-1F-D-015	15603140000	前轮右轴套	Front axle spacer RH	1
⑧	PAD125-1F-D-016	15603150000	后轮左轴套	Rear axle spacer LH	1
⑨	PAD125-1F-D-017	15603160000	后轮右轴套	Rear axle spacer RH	1
⑩	PAD125-1F-D-018	15603120000	调链片	Chain adjuster	2



#### 4、 Fuel Supply System

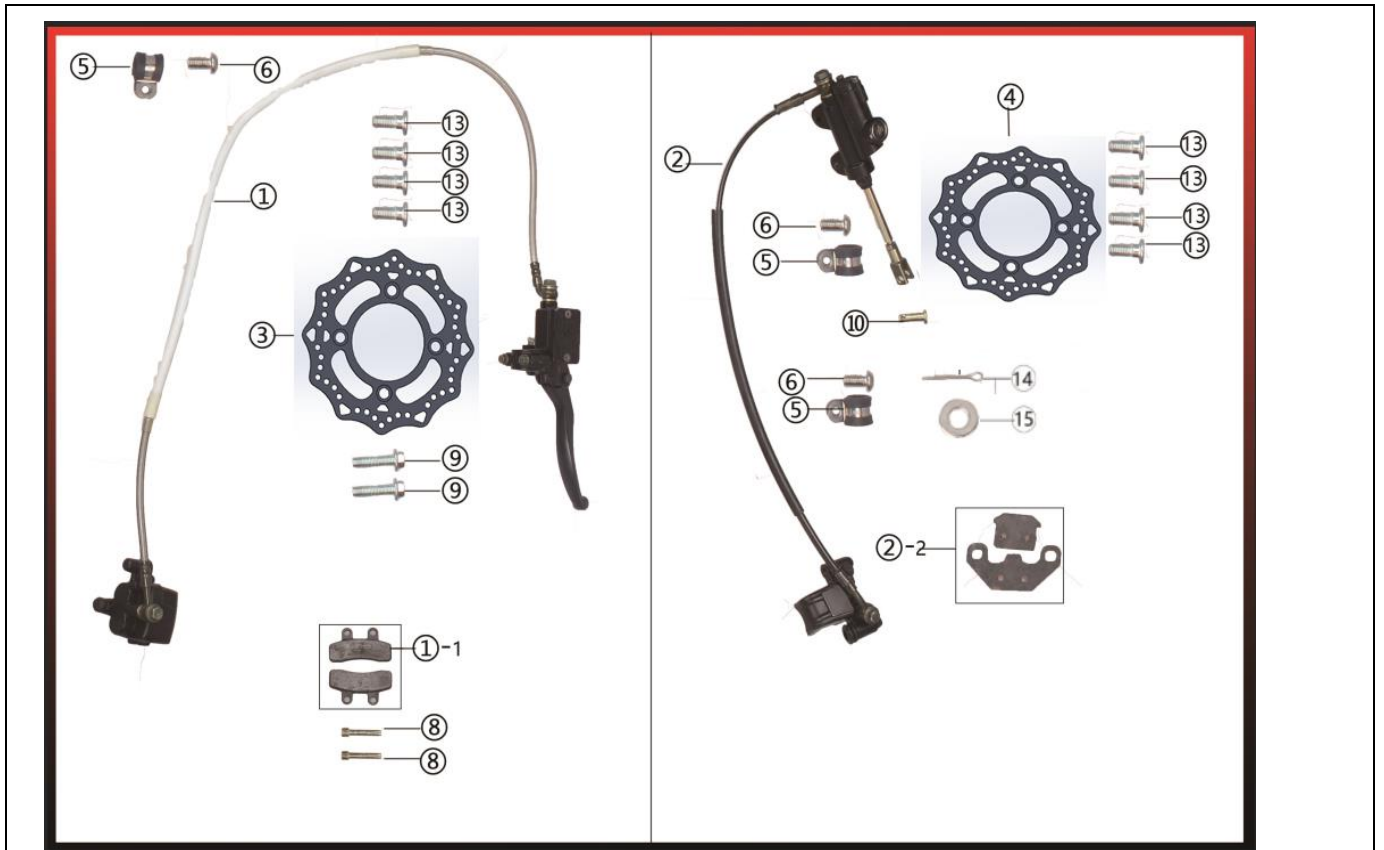
NO.	ICEBEAR PART NO.	FACTORY PART NO.	CHINESE NAME	English Name	QTY
①	PAD125-1F-E-001	15604010000-1	油箱	Fuel tank, Iron	1
②	PAD125-1F-E-002	15604020000-1	油箱盖	Fuel tank cap	1
③	PAD125-1F-E-003	15604030000-1	油箱开关	Pet-cock fuel	1
④	PAD125-1F-E-004	15604010100	橡胶圈	Rubber washer	2
⑤	PAD125-1F-E-005	GB5787M62001	六角法兰面螺栓	Bolt flanged	2
⑥	PAD125-1F-E-006	15604040200	油管卡箍	Fuel hose clamp	4
⑦	PAD125-1F-E-007	15604040100-1	空气阀		1
⑧	PAD125-1F-E-008	15604010100	橡胶圈	Rubber washer	2
⑨	PAD125-1F-E-009	15604010200	T型套	T-flanged spacer	2
⑩	PAD125-1F-E-010	15604060000	汽油过滤器	Fuel filter	2
⑪	PAD125-1F-E-011	15604040300	上油管	Upper fuel hose	1
⑫	PAD125-1F-E-012	15604040400	下油管	lower fuel hose	1
⑬	PAD125-1F-E-013	GB5787M62001	六角法兰面螺栓	Bolt flanged	2
⑭	PAD125-1F-E-014	GBT6177M601	六角法兰面自锁螺母	Nut, flanged locking	2



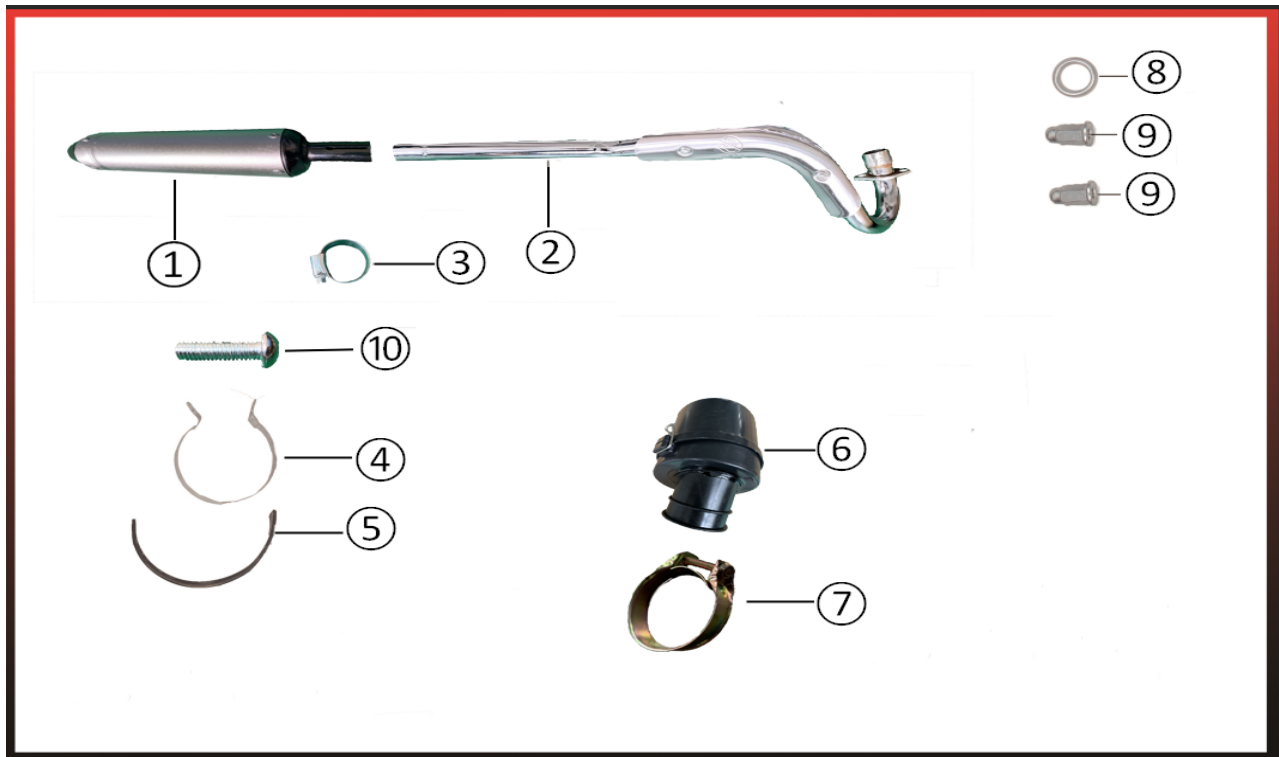
## 5、Steering System

NO.	ICEBEAR PART NO.	FACTORY PART NO.	CHINESE NAME	English Name	QTY
①	PAD125-1F-F-001	15605080000	方向把	Handle bar	1
②	PAD125-1F-F-002	15605010100	上连板	Top triple clamp	1
③	PAD125-1F-F-003	15605010200	下联板	Bottom triple clamp	1
④	PAD125-1F-F-004	15605050000	方向柱	Steering stem	1
⑤	PAD125-1F-F-005	156051300L0	左右把套	left & right hand grip	1
⑥	PAD125-1F-F-006	15605210100	滚针轴承总成	Top needle bearing assy	1
⑦	PAD125-1F-F-007	15605020000	方向把护胸	Foam padding	1
⑧	PAD125-1F-F-008	15605170100	联板上下压块	Top & Bottom handle bar riser	2
⑩	PAD125-1F-F-009	15605180000	盖母	Steering stem top nut	1
⑪	PAD125-1F-F-010	15605190000	大平垫	Flat washer	1
⑫	PAD125-1F-F-011	15905200000	锁母	lock nut	1
⑬	PAD125-1F-F-012	GBT70. 1M810401	内六角螺栓	Bolt	4
⑭	PAD125-1F-F-013	GBT6187M801	六角法兰面锁紧螺母	Nut flanged locking	4
⑮	PAD125-1F-F-014	GBT70. 1M81701	内六角螺栓	Bolt	4
⑯	PAD125-1F-F-015	GBT70. 1M81501	内六角螺栓	Bolt	2
⑰	PAD125-1F-F-016	GBT93801	弹垫圈	Lock washer	2



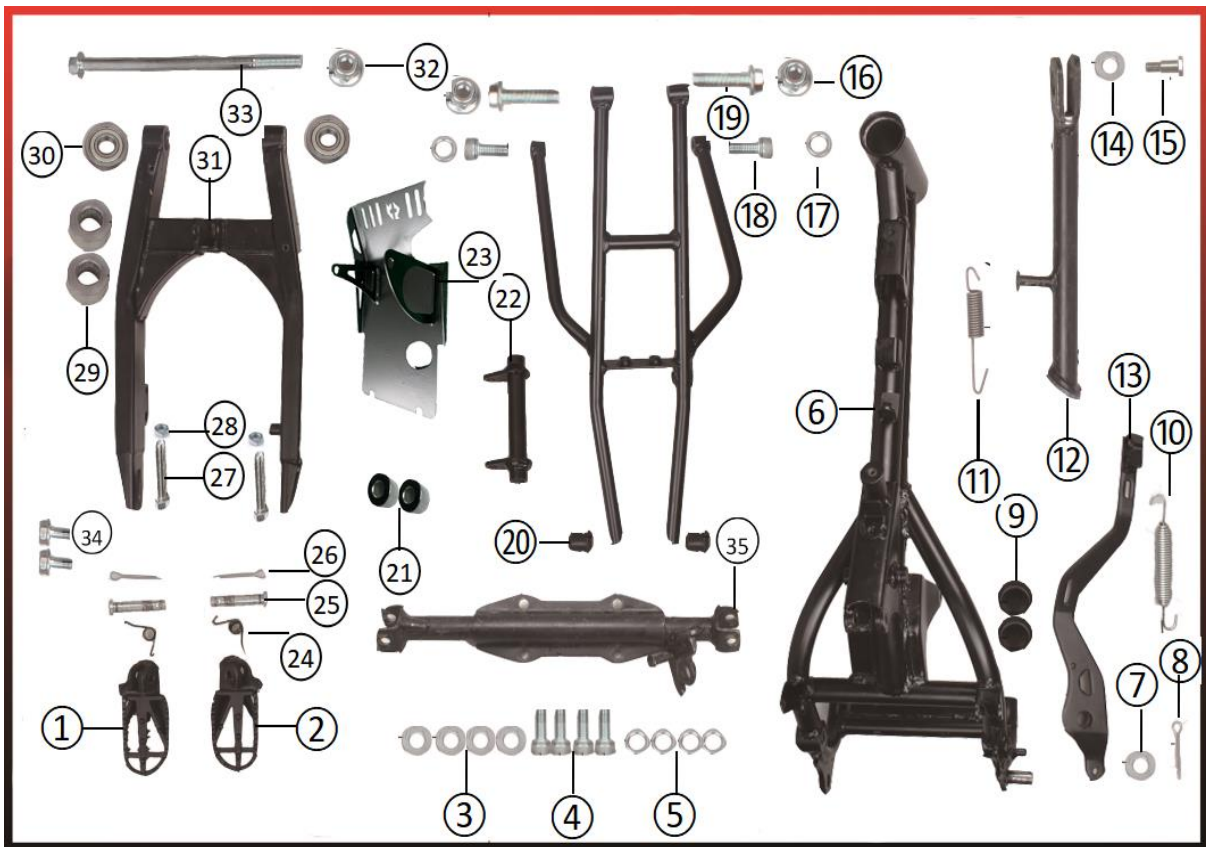


NO.	ICEBEAR PART NO.	FACTORY PART NO.	CHINESE NAME	English Name	QTY
6、Braking System					
①	PAD125-1F-G-001	15606010500-1	前碟刹总成	Brake assy with brake front	1
①-1	PAD125-1F-G-002	15606010500	前碟刹蹄块总成	Brake pad assy front	1
②	PAD125-1F-G-003	15606020500-1	后碟刹总成	Brake assy with brake rear	1
②-2	PAD125-1F-G-004	15606020500	后碟刹蹄块总成	Brake pad assy rear	1
③	PAD125-1F-G-005	15606010200	前碟刹盘	Front brake disc	1
④	PAD125-1F-G-006	15606010300	后碟刹盘	Rear brake disc	1
⑤	PAD125-1F-G-007	15606012700	油管卡	Clamp hose	3
⑥	PAD125-1F-G-008	GBT70. 1M61201	内六角盘头螺栓	Bolt	3
⑩	PAD125-1F-G-009	15606040000	销轴	Pin rod	1
⑬	PAD125-1F-G-010	15606070000	碟刹盘固定螺栓	Bolt	4
⑭	PAD125-1F-G-011	15608160000	开口销	Cotter pin	1
⑮	PAD125-1F-G-012	GBT97. 1801M14	平垫圈	Flat Washers	1



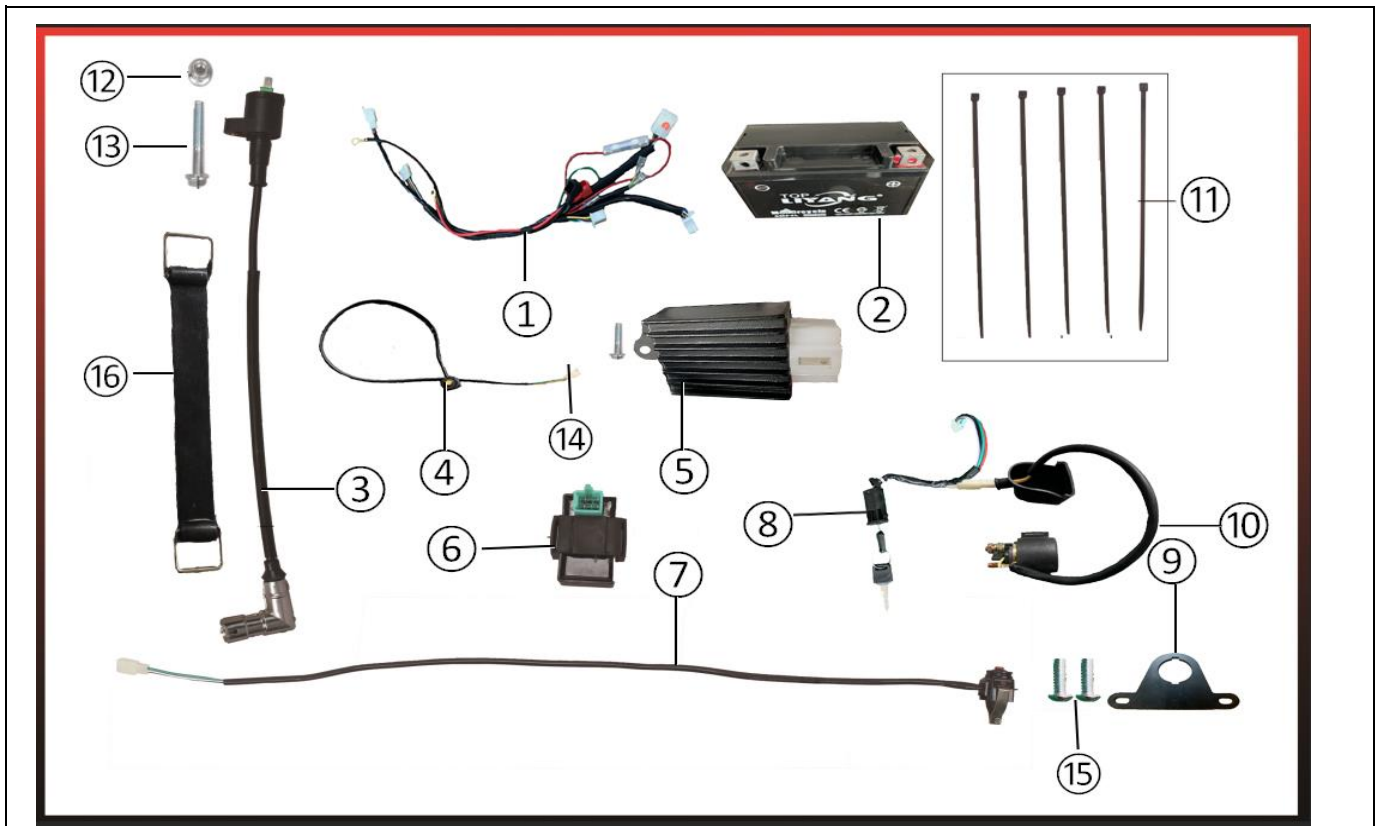
7、Intake & Exhaust System					
NO.	ICEBEAR PART NO.	FACTORY PART NO.	CHINESE NAME	English Name	QTY
①	PAD125-1F-H-001	21290000	消音器筒	Alloy muffler	1
②	PAD125-1F-H-002	21380000	消音器管带防烫片	Exhaust pipe with anti-iron cover	1
③	PAD125-1F-H-003	21380000-1	消音器筒管连接卡箍	Connection clamp	1
④	PAD125-1F-H-004	21380000-2	消音器卡箍	Muffler Clamp	1
⑤	PAD125-1F-H-005		缓冲胶片		1
⑥	PAD125-1F-H-006	17002100	空滤器	Air filter	1
⑦	PAD125-1F-H-007		空滤器卡箍	Air filter Clamp	1
⑧	PAD125-1F-H-008	15607011400	密封垫	Seal exhaust	1
⑨	PAD125-1F-H-009	GBT923M601	高帽螺母	Muffler screws	2
⑩	PAD125-1F-H-010	GBT70. 1M61201	内六角盘头螺栓	Bolt flanged	1
④	PAD125-1F-H-011	15607100000	扎带	Strapping tape	2



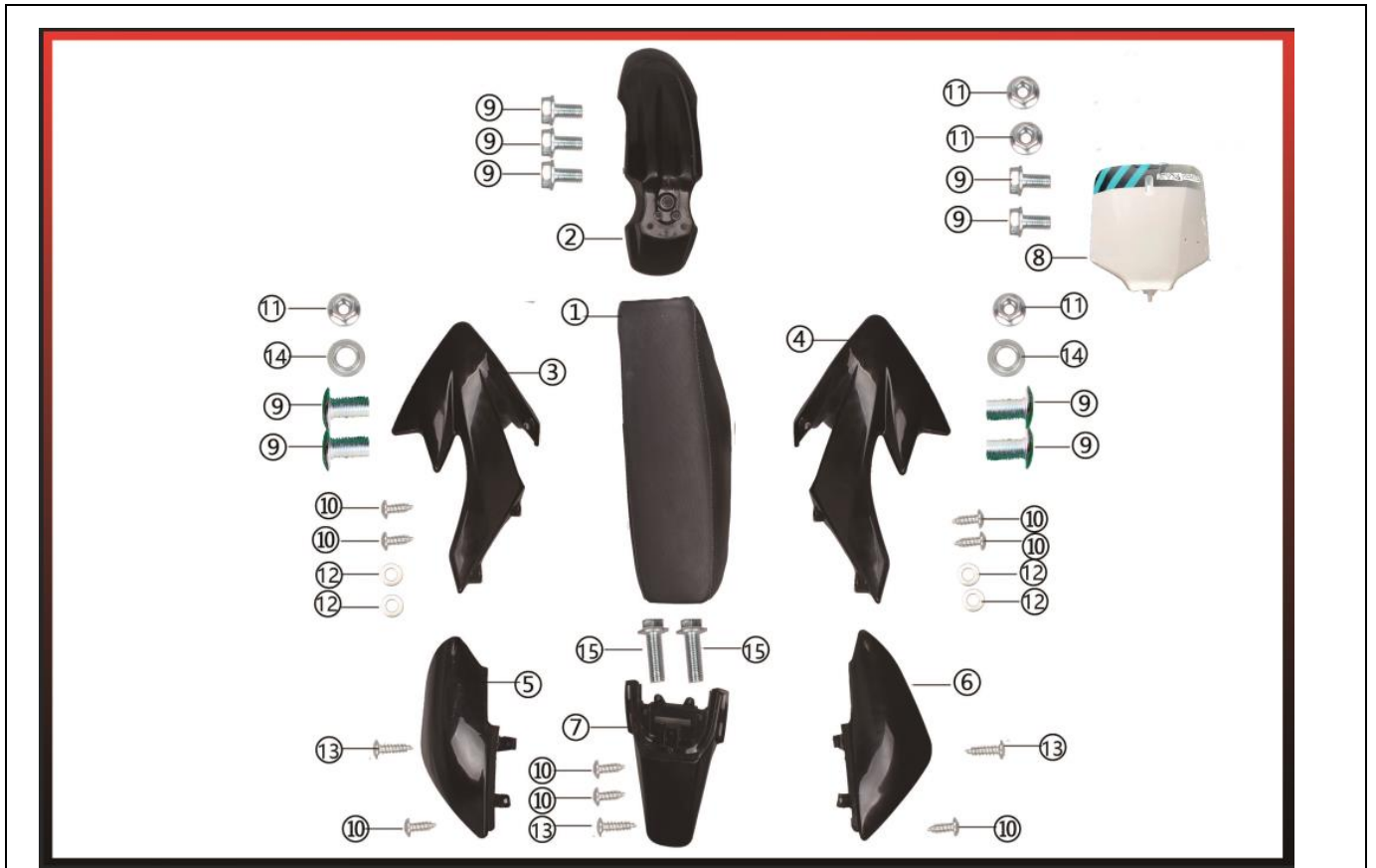


## 8、Frame & Accessories

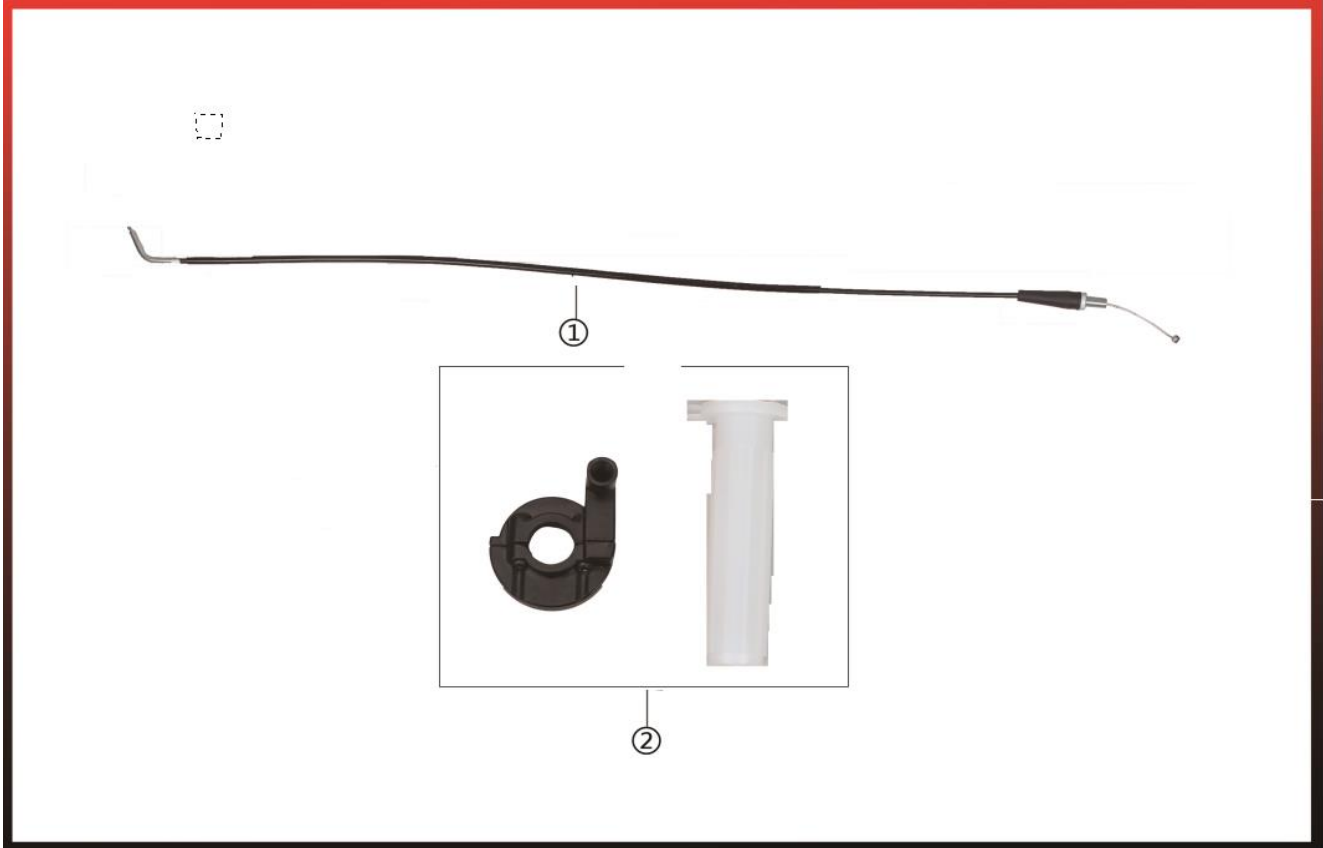
NO.	ICEBEAR PART NO.	FACTORY PART NO.	CHINESE NAME	English Name	QTY
①	PAD125-1F-I-001	156080300L0	左脚踏	Foot peg left	1
②	PAD125-1F-I-002	156080300R0	右脚踏	Foot peg right	1
③	PAD125-1F-I-003	GBT97. 1M801	平垫圈	Flat washer	4
④	PAD125-1F-I-004	GBT70. 1M82001	内六角螺栓圆柱头	Bolt	4
⑤	PAD125-1F-I-005	GBT93M801	弹垫圈	Lock washer	4
⑥	PAD125-1F-I-006	15608010000	主车架	Frame	1
⑦	PAD125-1F-I-007	GBT97. 1M1401	平垫圈	Flat washer	1
⑧	PAD125-1F-I-008	15608160000	开口销	Cotter pin	1
⑨	PAD125-1F-I-009	15608100100	平叉防尘盖	Swingarm dustproof	2
⑩	PAD125-1F-I-010	15608140000	刹车踏板回位簧	Main kick stand spring	1
⑪	PAD125-1F-I-011	15608170000-1	单撑回位簧		1
⑫	PAD125-1F-I-012	15608170000	单撑	Single Stand	1
⑬	PAD125-1F-I-013	15608150000	刹车踏板	Brake pedal	1
⑭	PAD125-1F-I-014	GBT97. 1M1401	平垫圈	Flat washer	1
⑮	PAD125-1F-I-015	15608170000-1	单撑轴位螺栓		1
⑯	PAD125-1F-I-016	GBT6187M801	六角法兰面锁紧螺母	Nut flanged locking	2
⑰	PAD125-1F-I-017	GBT93M801	弹垫圈	Lock washer	2
⑱	PAD125-1F-I-018	GBT70. 1M82001	内六角螺栓圆柱头	Bolt	2
⑲	PAD125-1F-I-019	GB578701	六角法兰面螺栓	Bolt flanged	2
⑳	PAD125-1F-I-020	15608050100	后浮梁胶塞	Tail bracket rubber plug	2
㉑	PAD125-1F-I-021	15608090000	隔套	Spacer	2
㉒	PAD125-1F-I-022	15608040000	发动机吊架	Engine mount bracket	1
23	PAD125-1F-I-023	15608110000	发动机护板	Engine plate cover	1
24	PAD125-1F-I-024	15608110000	脚踏板扭簧		2
㉕	PAD125-1F-I-025	15608110000-1	脚踏板销轴		2
㉖	PAD125-1F-I-026	15608110000-2	开口销		2
㉗	PAD125-1F-I-027	15608110000-3	外六角不锈钢螺栓		2
㉘	PAD125-1F-I-028	15608110000-4	外六角不锈钢螺母		2
29	PAD125-1F-I-029	15608090000	隔套	Spacer	2
30	PAD125-1F-I-030	15608080000	轴承	Bearing	2
31	PAD125-1F-I-031	15608020000	后平叉	Swing arm	1
32	PAD125-1F-I-032	GBT6187M1201	六角法兰面锁紧螺母	Nut flanged locking	1
33	PAD125-1F-I-033	15608100000	平叉轴	Swingarm axle	1
35	PAD125-1F-I-034	15608050000	搁脚架	Footrest support	1



9、Electric System					
NO.	ICEBEAR PART NO.	FACTORY PART NO.	CHINESE NAME	English Name	QTY
①	PAD125-1F-J-001	15609010000	主电缆	Wiring harness	1
②	PAD125-1F-J-002	15609010000-1	电池	Battery	1
③	PAD125-1F-J-003	15609010000-2	高压包	Ignition coil plug	1
④	PAD125-1F-J-004	15609040000	熄火开关总成	Kill switch assembly	1
⑤	PAD125-1F-J-005	15609010000-3	整流器	Rectifier	1
⑥	PAD125-1F-J-006	15609030000	点火线圈	Ignition coil assembly	1
⑦	PAD125-1F-J-007	15609010000-4	启动开关总成	Start switch	1
⑧	PAD125-1F-J-008	15609010000-5	电门锁	Electric lock	1
⑨	PAD125-1F-J-009	15609010000-6	电门锁支架	Electric lock Bracket	1
⑩	PAD125-1F-J-010	15609010000-7	继电器	Relay	1
⑪	PAD125-1F-J-011	15609050000	扎带	Strapping tape	5
⑫	PAD125-1F-J-012	GBT6187M601	六角法兰防松螺母	Hexagon flange locknut	1
⑬	PAD125-1F-J-013	GBT6187M601W	外六角法兰防螺栓	Hexagon flange anti-bolt	1
⑭	PAD125-1F-J-014	GBT6187M601W	外六角法兰防螺栓	Hexagon flange anti-bolt	1
⑮	PAD125-1F-J-015	GBT6187NM601	内六角小盘头螺栓	Hexagon socket head bolt	1
⑯	PAD125-1F-J-016	15609010000-2	电瓶拉带	Battery strap	1

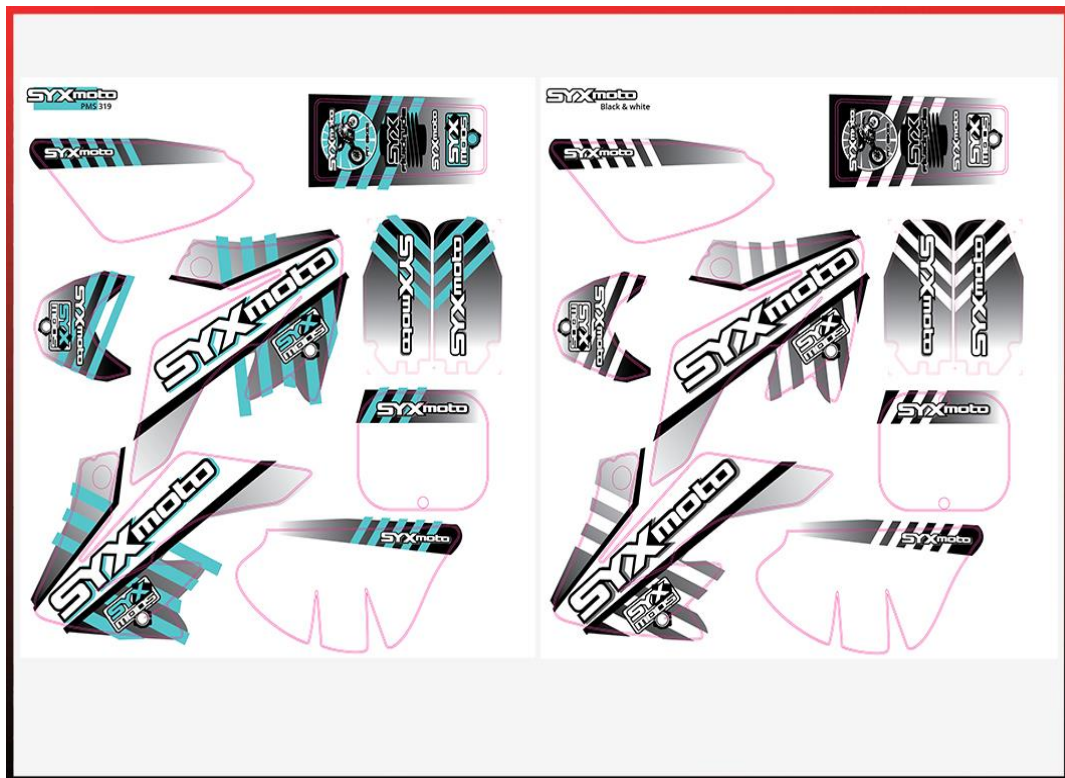


10、Covering Parts					
NO.	ICEBEAR PART NO.	FACTORY PART NO.	CHINESE NAME	English Name	QTY
①	PAD125-1F-K-001	15610010000	坐垫	Seat	1
②	PAD125-1F-K-002	15610020000	前泥板	Front fender	1
③	PAD125-1F-K-003	15610030000	左前护板	Fairing fuel tank LH	1
④	PAD125-1F-K-004	15610040000	右前护板	Fairing fuel tank RH	1
⑤	PAD125-1F-K-005	15610050000	左后护板	Fairing fuel tank LH	1
⑥	PAD125-1F-K-006	15610060000	右后护板	Fairing fuel tank RH	1
⑦	PAD125-1F-K-007	15610070000	后护板	Rear fender	1
⑧	PAD125-1F-K-008	15610080000	前面板	Number plate	1
⑨	PAD125-1F-K-009	GB5787M61201	六角法兰面螺栓	Bolt flanged	9
⑩	PAD125-1F-K-010	GBT845-19853801	十字盘头自攻螺钉	Bolt	8
⑪	PAD125-1F-K-011	GBT6187M601	六角法兰面锁紧螺母	Nut flanged locking	4
⑬	PAD125-1F-K-012	GBT845-19853120	十字盘头自攻螺钉	Bolt	2
⑭	PAD125-1F-K-013	15610100000	T型套	T-flanged spacer	2



### 11、Operation System

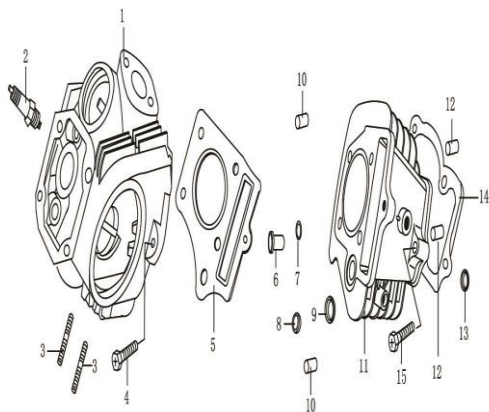
NO.	ICEBEAR PART NO.	FACTORY PART NO.	CHINESE NAME	English Name	QTY
①		15611010000	油门线	Throttle cable	1
②		15611010100	油门转把	Throttle base	1



### 12、Decals Kits

NO.	ICEBEAR PART NO.	FACTORY PART NO.	CHINESE NAME	English Name	QTY
①	PAD125-1F-L-001	15611030100	PAD125-1 蓝色全套贴花	PAD125-1 Blue decals kits	1
②	PAD125-1F-L-002	15611030101	PAD125-1 黑色全套贴花	PAD125-1 Black Green decals kits	1

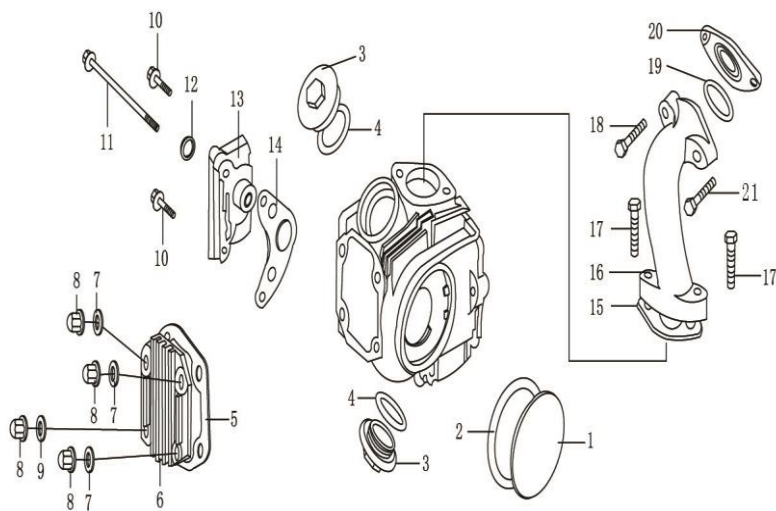
E-1 气缸头组件 & 气缸体 Cylinder Head & Cylinder Body



NO.	ICEBEAR PART NO.	FACTORY PART NO.	CHINESE NAME	English Name	QTY
1	PAD125-1F-E-A-001		气缸头部件	Cylinder head assy	1
2	PAD125-1F-E-A-002		火花塞 (A7RTC)	Spark plug	1
3	PAD125-1F-E-A-003		消声器双头螺栓M6×25	Double-headed bolt M6×35	2
4	PAD125-1F-E-A-004		螺栓M6×23	Bolt M6×23	1
5	PAD125-1F-E-A-005		气缸头密封垫组合	Gasket	1
6	PAD125-1F-E-A-006		翻边衬套	Bushing	1
7	PAD125-1F-E-A-007		小矩形密封圈 φ9×φ11.7×1.5	Ring φ9×φ11.7×1.5	1
8	PAD125-1F-E-A-008		垫圈 (回油道矩形圈衬套)	Washer	1
9	PAD125-1F-E-A-009		大矩形密封圈 φ14.5×φ18.5×2.4	Ring φ14.5×φ18.5×2.4	1
10	PAD125-1F-E-A-010		定位销 φ8×φ7.2×14	Locating Pin φ8×φ7.2×14	2
11	PAD125-1F-E-A-011		气缸体	Cylinder body	1
12	PAD125-1F-E-A-012		定位销 φ8×φ7.2×12	Locating Pin φ8×φ7.2×12	2
13	PAD125-1F-E-A-013		中矩形密封圈 φ11.5×φ15.7×2.4	Ring φ11.5×φ15.7×2.4	1
14	PAD125-1F-E-A-014		气缸体密封垫	Gasket	1
15	PAD125-1F-E-A-015		螺栓M6×30	Bolt M6×30	1

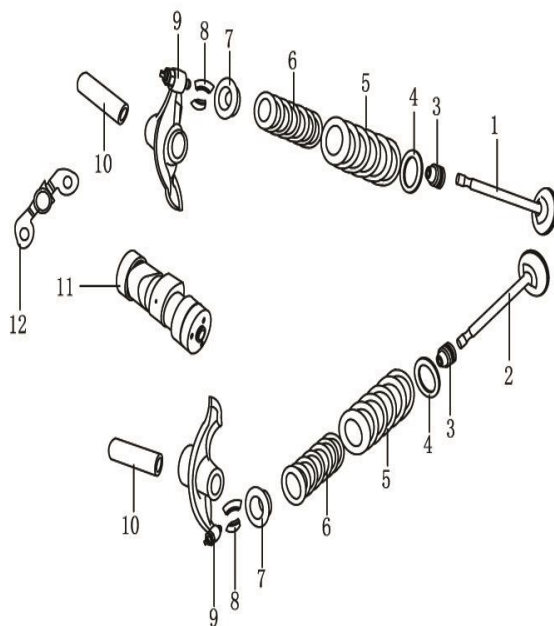


E-2 气缸头盖 & 进气管 Cylinder Head Cover & Intake Pipe



NO.	ICEBEAR PART NO.	FACTORY PART NO.	CHINESE NAME	English Name	QTY
1	PAD125-1F-E-B-001		气缸头左侧盖	Left cylinder head cover	1
2	PAD125-1F-E-B-002		气缸头左侧盖密封垫	Gasket	1
3	PAD125-1F-E-B-003		气门盖	Valve cover	2
4	PAD125-1F-E-B-004		气门盖O形圈 $\Phi 30.8 \times 3.2$	O-ring $\Phi 30.8 \times 3.2$	2
5	PAD125-1F-E-B-005		气缸头顶盖密封垫	Gasket	1
6	PAD125-1F-E-B-006		气缸头顶盖	Cylinder head cover	1
7	PAD125-1F-E-B-007		垫圈 $\Phi 7$	Washet $\Phi 7$	3
8	PAD125-1F-E-B-008		盖形螺母M7	Nut M7	4
9	PAD125-1F-E-B-009		铜垫圈 $\Phi 7$	Washer $\Phi 7$	1
10	PAD125-1F-E-B-010		螺栓M6 $\times 20$	Blot M6 $\times 20$	2
11	PAD125-1F-E-B-011		螺栓M6 $\times 110$	Blot M6 $\times 110$	1
12	PAD125-1F-E-B-012		铝垫圈 $\Phi 6.2$	Washer $\Phi 6.2$	1
13	PAD125-1F-E-B-013		气缸头右侧盖组合	Right cylinder head cover	1
14	PAD125-1F-E-B-014		气缸头右侧盖密封垫	Gasket	1
15	PAD125-1F-E-B-015		进气管密封垫	Gasket	1
16	PAD125-1F-E-B-016		进气管	Inlet piece	1
17	PAD125-1F-E-B-017		螺栓M6 $\times 25$	Blot M6 $\times 25$	2
18	PAD125-1F-E-B-018		螺栓M6 $\times 45$	Blot M6 $\times 45$	1
19	PAD125-1F-E-B-019		进气管O形圈 $\Phi 25.4 \times 2.5$	O-riring $\Phi \Phi 25.4 \times 2.5$	1
20	PAD125-1F-E-B-020		化油器胶木垫	Gasket	1
21	PAD125-1F-E-B-021		螺栓M6 $\times 22$	Blot M6 $\times 22$	1

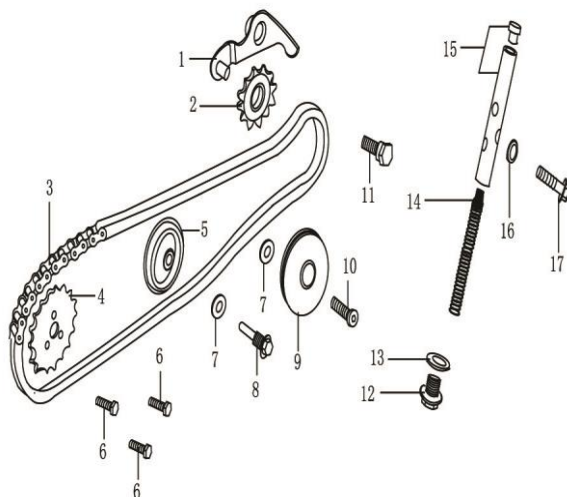
E-3 凸轮轴 & 气门 Camshaft & Valve



NO.	ICEBEAR PART NO.	FACTORY PART NO.	CHINESE NAME	English Name	QTY
1	PAD125-1F-E-C-001		排气门	Exhaust valve	1
2	PAD125-1F-E-C-002		进气门	Inlet valve	1
3	PAD125-1F-E-C-003		挡油罩组合	Oil guard comp	2
4	PAD125-1F-E-C-004		气门弹簧座圈	Outer spring valve seat	2
5	PAD125-1F-E-C-005	内外弹簧成套购买	气门外弹簧	Outer spring	2
6	PAD125-1F-E-C-006		气门内弹簧	Inner spring	2
7	PAD125-1F-E-C-007		气门弹簧座	Spring seat valve	2
8	PAD125-1F-E-C-008		气门锁夹	Lock plaes	4
9	PAD125-1F-E-C-009		气门摇臂组合	Rocker arm	2
10	PAD125-1F-E-C-010		气门摇臂轴	Rocker shaft	2
11	PAD125-1F-E-C-011		凸轮轴组合	Camshaft	1
12	PAD125-1F-E-C-012		减压阀组合	Decompression valve	1

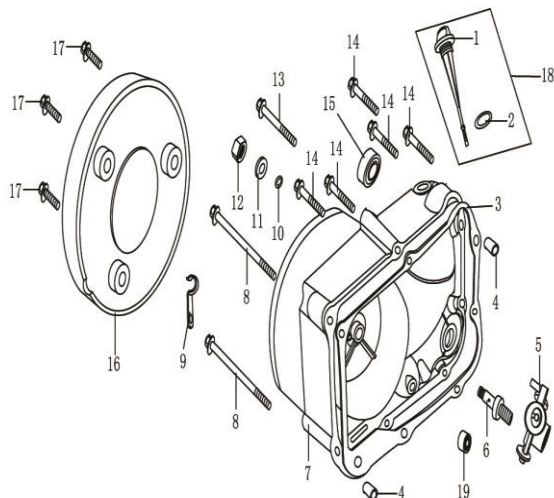


E-4 正时链条 & 张紧器部件 Timing Chain & Tensioner



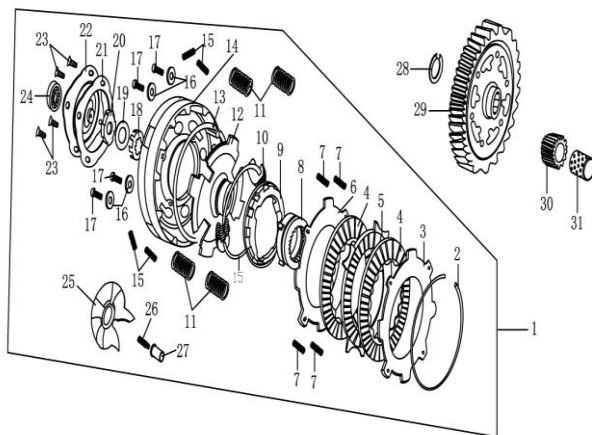
NO.	ICEBEAR PART NO.	FACTORY PART NO.	CHINESE NAME	English Name	QTY
1	PAD125-1F-E-D-001	104221	链条张紧臂	Tension arm	1
2	PAD125-1F-E-D-002	104204	链条张紧滚轮	Tension wheel	1
3	PAD125-1F-E-D-003	104150	正时链条组合	Timing chain	1
4	PAD125-1F-E-D-004	104101	正时从动链轮	Timing Driven Sprocket	1
5	PAD125-1F-E-D-005	104205	链条导向滚轮	Rolling wheel	1
6	PAD125-1F-E-D-006	GB/T5783	正时螺栓M5×12	Bolt M5×12	3
7	PAD125-1F-E-D-007	116109-050	链条导向滚轮芯轴垫片φ8	Washer φ8	2
8	PAD125-1F-E-D-008	104206	链条导向滚轮芯轴	Pin shaft	1
9	PAD125-1F-E-D-009		链条支撑滚轮	Chain Wheel Support	1
10	PAD125-1F-E-D-010		内六角螺栓M6×28	Bolt M6×28	1
11	PAD125-1F-E-D-011		链条张紧臂芯轴	Bolt	1
12	PAD125-1F-E-D-012		密封螺栓	Bolt	1
13	PAD125-1F-E-D-013		密封螺栓垫圈 φ 14	Washer φ 14	1
14	PAD125-1F-E-D-014		链条张紧杆弹簧	Spring	1
15	PAD125-1F-E-D-015		链条张紧杆组合	Tensioner comp	1
16	PAD125-1F-E-D-016		垫圈 φ 6.2	Washer φ 6.2	1
17	PAD125-1F-E-D-017		螺栓M6×16	Bolt M6×16	1

E-5 右曲轴箱盖 Right Crankcase Cover



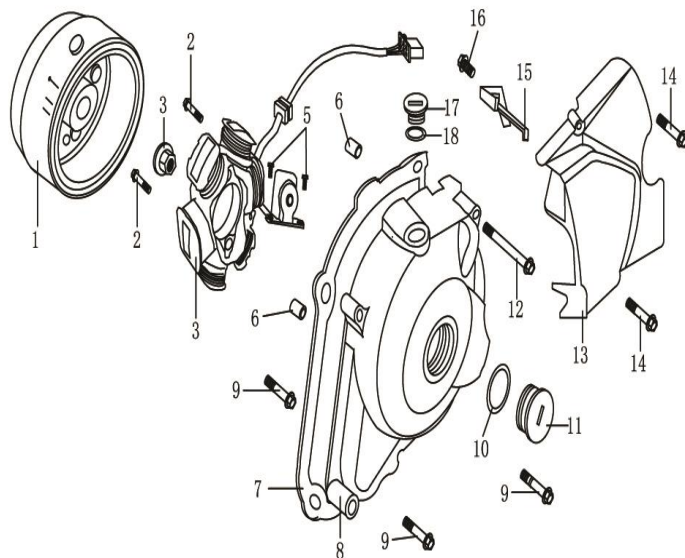
NO.	ICEBEAR PART NO.	FACTORY PART NO.	CHINESE NAME	English Name	QTY
1	PAD125-1F-E-E-001		机油尺	Oil ruler	1
2	PAD125-1F-E-E-002		机油尺O形圈 $\phi 18 \times 2.5$	O-ring $\phi 18 \times 3.5$	1
3	PAD125-1F-E-E-003		右曲轴箱盖密封垫	Gasket	1
4	PAD125-1F-E-E-004		定位销 $\phi 8 \times 12$	Locating pin $\phi 8 \times 12$	2
5	PAD125-1F-E-E-005		离合器挺杆	Clutch lifter	1
6	PAD125-1F-E-E-006		调整螺栓M8	Regulation bolt M8	1
7	PAD125-1F-E-E-007		右曲轴箱盖	Right crankcase cover	1
8	PAD125-1F-E-E-008		螺栓M8×80	Bolt M8×80	2
9	PAD125-1F-E-E-009		高压线夹	Clamp	1
10	PAD125-1F-E-E-010		调节螺栓O形圈 $\phi 7 \times 2$	O-ring O形圈 $\phi 7 \times 2$	1
11	PAD125-1F-E-E-011		调节螺栓平垫圈	Washer	1
12	PAD125-1F-E-E-012		调节螺母M8	Nut M8	1
13	PAD125-1F-E-E-013		螺栓M6×65	Bolt M6×65	1
14	PAD125-1F-E-E-014		螺栓M6×40	Bolt M6×40	5
15	PAD125-1F-E-E-015		起动轴油封 $\phi 13.7 \times \phi 24 \times 5$	Oil seal $\phi 13.7 \times \phi 24 \times 5$	1
16	PAD125-1F-E-E-016		右装饰盖	Right decorative cover	1
17	PAD125-1F-E-E-017		螺栓M6×16	Bolt M6×16	3
18	PAD125-1F-E-E-018		机油尺组合	Oil ruler comp	1
19	PAD125-1F-E-E-019		滚针轴承HK101410	Needle roller bearing (HK101410)	1

## E-6 离合器 Clutch



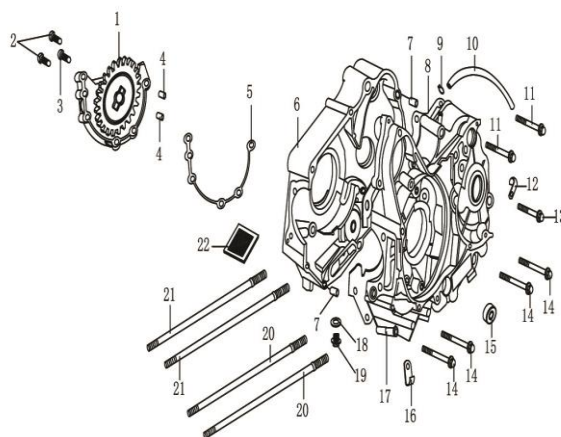
NO.	ICEBEAR PART NO.	FACTORY PART NO.	CHINESE NAME	English Name	QTY
1	PAD125-1F-E-F-001		离合器组件	Clutch assy	1
2	PAD125-1F-E-F-002		弹性挡圈	Circlip	1
3	PAD125-1F-E-F-003		上板	Clutch plank	1
4	PAD125-1F-E-F-004		主动摩擦片	Rub slice	2
5	PAD125-1F-E-F-005		从动摩擦片	Steel slice	1
6	PAD125-1F-E-F-006		下板	Clutch plank	1
7	PAD125-1F-E-F-007		分离弹簧	Spring	4
8	PAD125-1F-E-F-008		定心滑套	Centering sleeve	1
9	PAD125-1F-E-F-009		齿外套组合	Gear sets	1
10	PAD125-1F-E-F-010		离合器平重组合	Clutch balance	1
11	PAD125-1F-E-F-011		离合器弹簧	Spring	4
12	PAD125-1F-E-F-012		主动盘组合	Clutch driving disk	1
13	PAD125-1F-E-F-013		离合平重固定环	Fixed ring	1
14	PAD125-1F-E-F-014		离合器外罩组合	Clutch outside cover	1
15	PAD125-1F-E-F-015		减震弹簧	Spring	4
16	PAD125-1F-E-F-016		垫圈	Washer	4
17	PAD125-1F-E-F-017		螺钉M6×16	Screw M6×16	4
18	PAD125-1F-E-F-018		止退垫圈	Lock washer	1
19	PAD125-1F-E-F-019		碟形垫圈	Washer	1
20	PAD125-1F-E-F-020		圆螺母	Nut	1
21	PAD125-1F-E-F-021		端盖密封垫	Gasket	1
22	PAD125-1F-E-F-022		离合器端盖	Clutch cover	1
23	PAD125-1F-E-F-023		螺钉M5×10	Screw M5×10	4
24	PAD125-1F-E-F-024		轴承6000	Bearing (6000)	1
25	PAD125-1F-E-F-025		凸轮盘组合	Cam disk	1
26	PAD125-1F-E-F-026		通油导管弹簧	Spring	1
27	PAD125-1F-E-F-027		通油导管	Oil guide pipe	1
28	PAD125-1F-E-F-028		挡圈φ17	Circip φ17	1
29	PAD125-1F-E-F-029		从动齿轮组合	Driven gear	1
30	PAD125-1F-E-F-030		主动齿轮	Primary driving gear	1
31	PAD125-1F-E-F-031		主动齿轮内套	Gear sets	1

E-7 左曲轴箱盖 & 磁电机 Left Crankcase Cover & Magneto



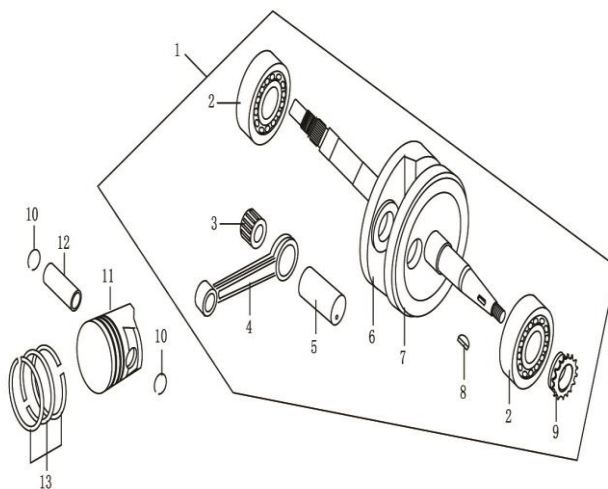
NO.	ICEBEAR PART NO.	FACTORY PART NO.	CHINESE NAME	English Name	QTY
1	PAD125-1F-E-G-001		磁电机转子部件	Rotor assy, magneto	1
2	PAD125-1F-E-G-002		螺栓M6×16	Bolt M6×16	2
3	PAD125-1F-E-G-003		磁电机螺母M10×1.25	Nut M10×1.25	1
4	PAD125-1F-E-G-004		磁电机定子部件	Stator assy, magneto	1
5	PAD125-1F-E-G-005		螺栓M5×16	Bolt M5×16	2
6	PAD125-1F-E-G-006		定位销φ8×12	Locating pin φ8×12	2
7	PAD125-1F-E-G-007		左曲轴箱前盖密封垫	Gasket	1
8	PAD125-1F-E-G-008		左曲轴箱前盖	Left crankcase front cover	1
9	PAD125-1F-E-G-009		螺栓M6×32	Bolt M6×32	2
10	PAD125-1F-E-G-010		大视孔O形圈φ27.4×2.4	O-ring φ27.4×2.4	1
11	PAD125-1F-E-G-011		大视孔盖	Checking cover (big)	1
12	PAD125-1F-E-G-012		螺栓M6×50	Bolt M6×50	2
13	PAD125-1F-E-G-013		左曲轴箱后盖	Left crankcase rear cover	1
14	PAD125-1F-E-G-014		螺栓M6×28	Blot M6×28	2
15	PAD125-1F-E-G-015		压线板	Press plank	1
16	PAD125-1F-E-G-016		螺栓M6×16	Blot M6×16	1
17	PAD125-1F-E-G-017		小视孔盖	Checking cover (small)	1
18	PAD125-1F-E-G-018		小视孔O形圈φ13.8×2.5	O-ring φ13.8×2.5	1

## E-8 曲轴箱 & 机油泵 Crankcase & Oil Pump



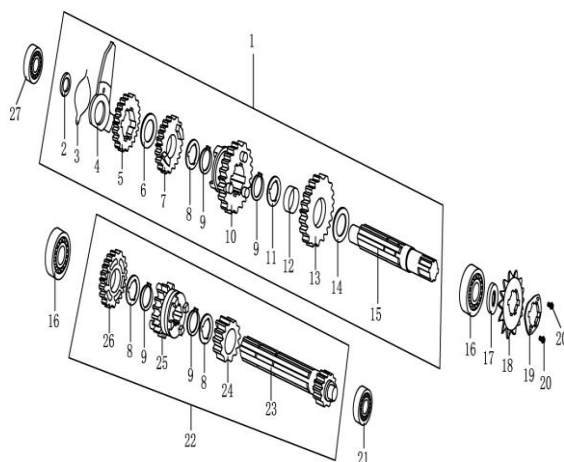
NO.	ICEBEAR PART NO.	FACTORY PART NO.	CHINESE NAME	English Name	QTY
1	PAD125-1F-E-H-001		机油泵组合	Oil pump	1
2	PAD125-1F-E-H-002		螺栓M6×40	Bolt M6×40	2
3	PAD125-1F-E-H-003		螺栓M6×35	Bolt M6×35	1
4	PAD125-1F-E-H-004		定位销Φ8×12	Locating pin Φ8×12	2
5	PAD125-1F-E-H-005		机油泵密封垫	Gasket	1
6	PAD125-1F-E-H-006		右曲轴箱体组合	Right creakcase comp	1
7	PAD125-1F-E-H-007		定位销Φ10×14	Locating pinΦ10×14	2
8	PAD125-1F-E-H-008		曲轴箱密封垫	Gasket	1
9	PAD125-1F-E-H-009		通气管夹簧	Spring card	1
10	PAD125-1F-E-H-010		通气管胶管	Tube, over flow	1
11	PAD125-1F-E-H-011		螺栓M6×60	Bolt M6×60	2
12	PAD125-1F-E-H-012		通气管夹	Clamp	1
13	PAD125-1F-E-H-013		螺栓M6×50	Bolt M6×50	1
14	PAD125-1F-E-H-014		螺栓M6×65	Bolt M6×65	4
15	PAD125-1F-E-H-015		换挡轴油封Φ11.6× Φ24×10	Oil sealΦ11.6×Φ24×10	1
16	PAD125-1F-E-H-016		溢流管夹	Clamp	1
17	PAD125-1F-E-H-017		左曲轴箱体组合	Left crankcase comp	1
18	PAD125-1F-E-H-018		放油螺栓垫片Φ12	Washet Φ12	1
19	PAD125-1F-E-H-019		放油螺栓	Put oil bolt	1
20	PAD125-1F-E-H-020		双头螺栓A	Double-headed bolt-A	2
21	PAD125-1F-E-H-021		双头螺栓B	Double-headed bolt-B	2
22	PAD125-1F-E-H-022		机油过滤网组合	Oil mesh screen comp	1

E-9 曲柄连杆组件 & 活塞 Crankshaft & Piston



NO.	ICEBEAR PART NO.	FACTORY PART NO.	CHINESE NAME	English Name	QTY
1	PAD125-1F-E-I-001		曲柄连杆部件	Crankshaft and connecting rod	1
2	PAD125-1F-E-I-002		轴承6304	Bearing (6304)	2
3	PAD125-1F-E-I-003		滚针轴承	Needle roller bearing	1
4	PAD125-1F-E-I-004		连杆	Connecting rod	1
5	PAD125-1F-E-I-005		曲柄销组合	Crank pin	1
6	PAD125-1F-E-I-006		右曲柄	Right crankshaft	1
7	PAD125-1F-E-I-007		左曲柄	Left crankshaft	1
8	PAD125-1F-E-I-008		半圆键	Semi-Circular key	1
9	PAD125-1F-E-I-009		正时主动链轮	Timing driving sprocket	1
10	PAD125-1F-E-I-010		活塞销挡圈	Circlip	2
11	PAD125-1F-E-I-011		活塞	Piston	1
12	PAD125-1F-E-I-012		活塞销	Piston pin	1
13	PAD125-1F-E-I-013		活塞环组合	Piston ring comp	1

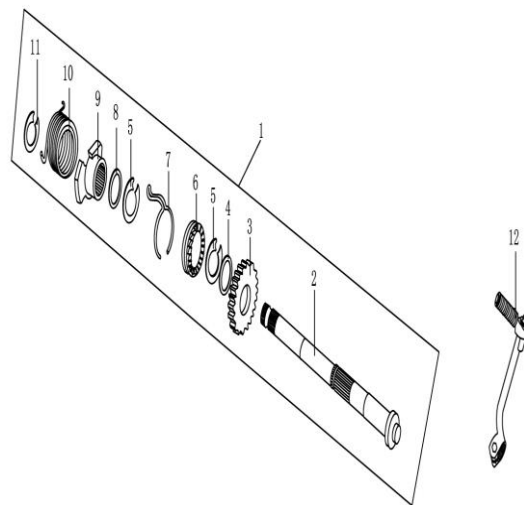
E-10	传动机构	Transmission Organization		
------	------	---------------------------	--	--



NO.	ICEBEAR PART NO.	FACTORY PART NO.	CHINESE NAME	English Name	QTY
1	PAD125-1F-E-J-001		副轴部件	Transmission countershaft	1
2	PAD125-1F-E-J-002		副轴止推垫圈 $\Phi 13.5 \times \Phi 26 \times 0.5$	Washer $\Phi 13.5 \times \Phi 26 \times 0.5$	1
3	PAD125-1F-E-J-003		阻力弹簧	Spring	1
4	PAD125-1F-E-J-004		限位板	Limit plank	1
5	PAD125-1F-E-J-005		副轴四档齿	4ft countershaft	1
6	PAD125-1F-E-J-006		副轴厚垫圈 $\Phi 20.2 \times \Phi 27 \times 1$	Washer $\Phi 20.2 \times \Phi 27 \times 1$	1
7	PAD125-1F-E-J-007		副轴三档齿	3ft countershaft	1
8	PAD125-1F-E-J-008		花键垫圈I	Washer	3
9	PAD125-1F-E-J-009		挡圈 $\Phi 15.5$	Circlip $\Phi 15.5$	4
10	PAD125-1F-E-J-010		副轴二档齿	2ft countershaft	1
11	PAD125-1F-E-J-011		花键垫圈II	Washer	1
12	PAD125-1F-E-J-012		副轴轴套	Sleeve	1
13	PAD125-1F-E-J-013		副轴一档齿	1ft countershaft	1
14	PAD125-1F-E-J-014		垫圈 $\Phi 17 \times \Phi 23 \times 1$	Washer $\Phi 17 \times \Phi 23 \times 1$	1
15	PAD125-1F-E-J-015		传动副轴	Countershaft	1
16	PAD125-1F-E-J-016		轴承6203	Bearing (6203)	2
17	PAD125-1F-E-J-017		副轴油封 $\Phi 17 \times \Phi 29 \times 5$	Oil seal $\Phi 17 \times \Phi 29 \times 5$	1
18	PAD125-1F-E-J-018		主动链轮	Driving sprocket	1
19	PAD125-1F-E-J-019		主动链轮固定板	Locating plate	1
20	PAD125-1F-E-J-020		螺栓M6×8	Bolt M6×8	2
21	PAD125-1F-E-J-021		轴承6001	Bearing (6001)	1
22	PAD125-1F-E-J-022		主轴部件	Transmission mainshaft	1
23	PAD125-1F-E-J-023		传动主轴	Mainshaft	1
24	PAD125-1F-E-J-024		主轴二档齿	2ft mainshaft	1
25	PAD125-1F-E-J-025		主轴三档齿	3ft mainshaft	1
26	PAD125-1F-E-J-026		主轴四档齿	4ft mainshaft	1
27	PAD125-1F-E-J-027		轴承6201	Bearing (6201)	1

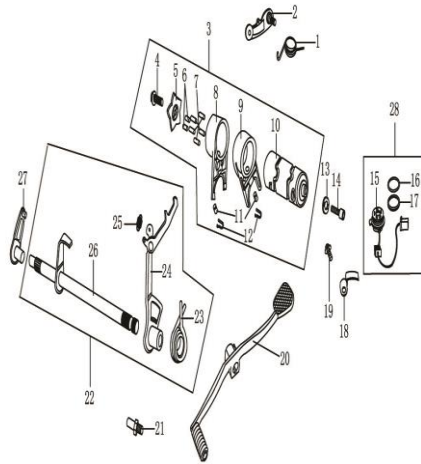


E-11 起动轴 Start Shaft



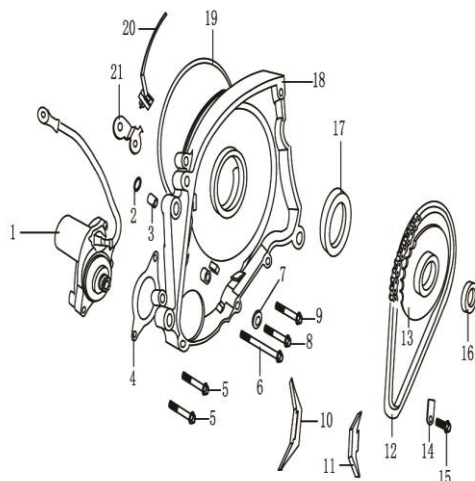
NO.	ICEBEAR PART NO.	FACTORY PART NO.	CHINESE NAME	English Name	QTY
1	PAD125-1F-E-K-001		起动轴部件	Start shaft assy	1
2	PAD125-1F-E-K-002		起动轴	Start shaft	1
3	PAD125-1F-E-K-003		起动齿轮	Starting sproket	1
4	PAD125-1F-E-K-004		大垫圈 $\phi 20.2 \times \phi 27$	Washer $\phi 20.2 \times \phi 27 \times 1$	1
5	PAD125-1F-E-K-005		限位挡圈 $\phi 18.5$	Circlip $\phi 18.5$	2
6	PAD125-1F-E-K-006		起动棘轮	Staring ratchet	1
7	PAD125-1F-E-K-007		摩擦弹簧	Spring	1
8	PAD125-1F-E-K-008		小垫圈 $\phi 17.2 \times \phi 24$	Washer $\phi 17.2 \times \phi 24 \times 1$	1
9	PAD125-1F-E-K-009		起动弹簧座	Spring block	1
10	PAD125-1F-E-K-010		起动扭簧	Start spring	1
11	PAD125-1F-E-K-011		限位挡圈 $\phi 15.5$	Circlip $\phi 15.5$	1
12	PAD125-1F-E-K-012		起动踏杆部件	Start stroke	1

E-12 变速机构 Gearshift Organization



NO.	ICEBEAR PART NO.	FACTORY PART NO.	CHINESE NAME	English Name	QTY
1	PAD125-1F-E-L-001		变档定位板扭簧	Spring	1
2	PAD125-1F-E-L-002		变档定位板组合	Fixing plate comp	1
3	PAD125-1F-E-L-003		变速鼓部件	Gearshif drum comp	1
4	PAD125-1F-E-L-004		螺钉M6×16	Screw M6×16	1
5	PAD125-1F-E-L-005		五星拨板	Shift plate	1
6	PAD125-1F-E-L-006		五星拨板定位销	Pin	2
7	PAD125-1F-E-L-007		五星拨板定位销I	Pin	5
8	PAD125-1F-E-L-008		换档右拨叉	Right shift fork	1
9	PAD125-1F-E-L-009		换档左拨叉	Left shift fork	1
10	PAD125-1F-E-L-010		变速鼓	Gearshif drum	1
11	PAD125-1F-E-L-011		导向销	Guide pin	2
12	PAD125-1F-E-L-012		弹簧夹	Clamp	2
13	PAD125-1F-E-L-013		变速鼓触头	Contact washer	1
14	PAD125-1F-E-L-014		螺栓M6×16	Blot M6×16	1
15	PAD125-1F-E-L-015		档位显示器	Gear indication comp	1
16	PAD125-1F-E-L-016		辅助密封平垫	Washer	1
17	PAD125-1F-E-L-017		O形圈Φ14×1.7	O-ringΦ14×1.7	1
18	PAD125-1F-E-L-018		档显开关压板	Press plate	1
19	PAD125-1F-E-L-019		螺栓M6×12	Blot M6×12	1
20	PAD125-1F-E-L-020		换档踏板部件	Gearshift pedal	1
21	PAD125-1F-E-L-021		换档定位螺栓	Pixing bolt	1
22	PAD125-1F-E-L-022		换档轴部件	Gearshift shaft assy	1
23	PAD125-1F-E-L-023		换档复位簧	Spring	1
24	PAD125-1F-E-L-024		换档臂组合	Shift arm	1
25	PAD125-1F-E-L-025		拉伸弹簧	Spring	1
26	PAD125-1F-E-L-026		换档轴	Gearshift shaft	1
27	PAD125-1F-E-L-027		换档操纵杆组合	Stick shift	1
28	PAD125-1F-E-L-028		档位显示部件	Stalls display comp	1

E-13 起动电机 Starting Motor



NO.	ICEBEAR PART NO.	FACTORY PART NO.	CHINESE NAME	English Name	QTY
1	PAD125-1F-E-M-001		起动电机组件	Starting motor	1
2	PAD125-1F-E-M-002		O形圈 $\phi 8.8 \times 1.9$	O-ring $\phi 5.8 \times 1.9$	2
3	PAD125-1F-E-M-003		定位销 $\phi 8 \times 12$	Locating pin $\phi 8 \times 12$	2
4	PAD125-1F-E-M-004		起动电机支架密封垫	Geaket	1
5	PAD125-1F-E-M-005		螺栓 $M6 \times 32$	Blot $M6 \times 32$	2
6	PAD125-1F-E-M-006		螺栓 $M6 \times 105$	Blot $M6 \times 105$	1
7	PAD125-1F-E-M-007		铝垫圈 $\phi 6.2$	Washer $\phi 6.2$	1
8	PAD125-1F-E-M-008		螺栓 $M6 \times 35$	Blot $M6 \times 35$	1
9	PAD125-1F-E-M-009		螺栓 $M6 \times 30$	Blot $M6 \times 30$	1
10	PAD125-1F-E-M-010		链条导向板	Oriented plate	1
11	PAD125-1F-E-M-011		链条张紧板	Tension plate	1
12	PAD125-1F-E-M-012		起动链条	Starting chain	1
13	PAD125-1F-E-M-013		起动大链轮组合	Starting sprocket comp	1
14	PAD125-1F-E-M-014		链轮压板	Press plank	1
15	PAD125-1F-E-M-015		螺栓 $M6 \times 12$	Blot $M6 \times 12$	1
16	PAD125-1F-E-M-016		链轮油封 $\phi 18.9 \times \phi 30 \times 5$	Oil seal $\phi 18.9 \times \phi 30 \times 5$	1
17	PAD125-1F-E-M-017		封油盘油封 $\phi 30 \times \phi 42 \times 4.5$	Oil seal $\phi 30 \times \phi 42 \times 4.5$	1
18	PAD125-1F-E-M-018		起动电机支架	Startar motor bracket	1
19	PAD125-1F-E-M-019		封油盘O形圈 $\phi 107 \times 2$	O-ring $\phi 107 \times 2$	1
20	PAD125-1F-E-M-020		塑料扎带	Tie	1
21	PAD125-1F-E-M-021		高压线夹	Clamp	1