

PST150-17



Parts No.	Description	Qty per Vehicel
PST150-17-A-001	Front panel	1
PST150-17-A-002	Front trim panel plate	1
PST150-17-A-003	Front panel trim	1
PST150-17-A-004	middle cover, toolbox	1



Parts No.	Description	Qty per Vehicel
PST150-17-B-001	Cover, meter	1
PST150-17-B-002	Front tire fender	1
PST150-17-B-003	Left and right front trim panel	1

PST150-17-B-004	Left and right side plates	1
-----------------	----------------------------	---



Parts No.	Description	Qty per Vehicel
PST150-17-C-001	Left and right decoration	1
PST150-17-C-002	Rear carrier cover	1
PST150-17-C-003	Left toolbox inner lid	1
PST150-17-C-004	Left toolbox lid	1



Parts No.	Description	Qty per Vehicel
PST150-17-D-001	Inner board, Front cover	1
PST150-17-D-002	Left toolbox button	1
PST150-17-D-003	Toolbox	1
PST150-17-D-004	Left toolbox inner lid holder	1
PST150-17-D-005	Cover, Lock	1





Parts No.	Description	Qty per Vehicel
PST150-17-E-001	Fuel tank cap decorative ring	1
PST150-17-E-002	decorative ring, Lock	1
PST150-17-E-003	Fuel tank board	1
PST150-17-E-004	Air fence	1



Parts No.	Description	Qty per Vehicel
PST150-17-F-001	rocker, Fuel tank cover	1
PST150-17-F-002	Frame fender	1
PST150-17-F-003	rocker holder, Fuel tank cover,	1
PST150-17-F-004	Main seat box	1





Parts No.	Description	Qty per Vehicel
PST150-17-G-001	footplate	2
PST150-17-G-002	Little cover, seat box	1
PST150-17-G-003	Little board, Left footplate	1
PST150-17-G-004	Cover, Battery box	1



Parts No.	Description	Qty per Vehicel
PST150-17-H-001	Rear fender	1
PST150-17-H-002	Small intake pipe lid	1



Parts No.	Description	Qty per Vehicel
PST150-17-I-001	Plastic fastener	4
PST150-17-I-002	Chrome	4
PST150-17-I-003	Expansion screws	2
PST150-17-I-004	Rear reflector	1



Parts No.	Description	Qty per Vehicel
PST150-17-J-001	Upper clamping seat ring decoration	1
PST150-17-J-002	Headlight	1
PST150-17-J-003	Lower clamping seat ring decoration	1
PST150-17-J-004	After the left and right turn signal	2
PST150-17-J-005	Taillights	1



Parts No.	Description	Qty per Vehicel
PST150-17-K-001	Headlight bracket	1

PST150-17-K-002	Rear registration plate lamps	1
PST150-17-K-003	Left and right pedal bracket	2
PST150-17-K-004	Cushion	1



Parts No.	Description	Qty per Vehicel
PST150-17-L-001	Front bracket of fuel tank cap	1
PST150-17-L-002	Frame	1
PST150-17-L-003	Front bracket of main seat barrel	1
PST150-17-L-004	Direction handle	1
PST150-17-L-005	Upper Lower handle clamping seat	2



Parts No.	Description	Qty per Vehicel
PST150-17-M-001	Second line board	1
PST150-17-M-002	Steel bowl	1
PST150-17-M-003	Front disc brakes	1

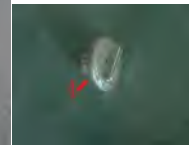
PST150-17-M-004	Master cylinder	1
PST150-17-M-005	brake lever	1
PST150-17-M-006	Brake Line	1
PST150-17-M-007	Brake Caliper	1
PST150-17-M-008	Brake Pad	2
PST150-17-M-009	Front left and right shock absorber	2
PST150-17-M-010	Front disc tray	1



Parts No.	Description	Qty per Vehicle
PST150-17-N-001	Left and right foot support	2
PST150-17-N-002	Fuel tank cover spring	1
PST150-17-N-003	Rear rack	1
PST150-17-N-004	LCD dashboard	1



Parts No.	Description	Qty per Vehicel
PST150-17-O-001	Set of locks	1
PST150-17-O-002	Front wheel rim	1
PST150-17-O-003	Tachometer	1
PST150-17-O-004	Front tire	1



Parts No.	Description	Qty per Vehicel
PST150-17-P-001	Left and right handle switch	1
PST150-17-P-002	Fuel tank	1
PST150-17-P-003	Oil level sensor	1
PST150-17-P-004	Fuel tank cap	1
PST150-17-P-005	Vacuum pump	1

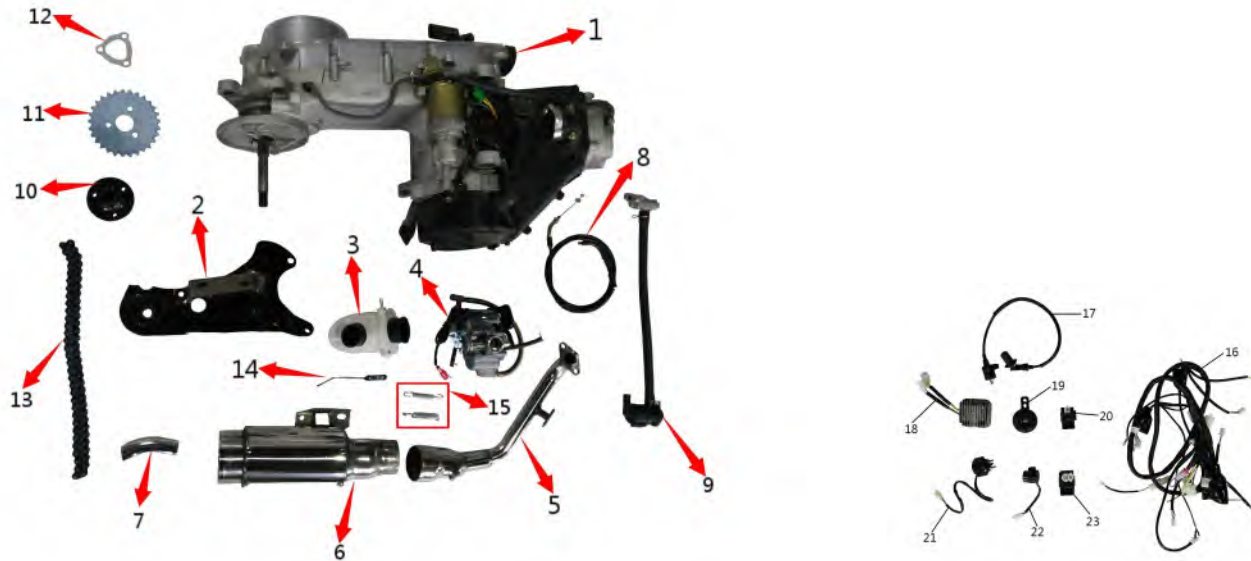




Parts No.	Description	Qty per Vehicel
PST150-17-Q-001	Throttle cable	1
PST150-17-Q-002	Seat lock cable	1
PST150-17-Q-003	Rearview mirror	2
PST150-17-Q-004	Left and right handle cap	2
PST150-17-Q-005	Wavy cotter pin	1
PST150-17-Q-006	Fuel tank cap pin	1



Parts No.	Description	Qty per Vehicel
PST150-17-R-001	Left and right pedal cover	2
PST150-17-R-002	Headlight bracket rubber ring	1
PST150-17-R-003	Fuel tank rubber ring	1
PST150-17-R-004	Panel rubber ring	1
PST150-17-R-005	Fuel tank bushing	1



Parts No.	Description	Qty per Vehicel
PST150-17-S-001	engine	1
PST150-17-S-002	engine connect plate	1
PST150-17-S-003	air filter	1
PST150-17-S-004	carburetor	1
PST150-17-S-005	Exhaust	1
PST150-17-S-006	Muffler	1
PST150-17-S-007	Muffler tail pipe	1
PST150-17-S-008	throttle cable	1
PST150-17-S-009	Secondary intake pipe	1
PST150-17-S-010	sprocket holder	1
PST150-17-S-011	sprocket	1
PST150-17-S-012	sprocket locker	1
PST150-17-S-013	chain	1

PST150-17-S-014	air filter holder	1
PST150-17-S-015	Muffler spring	2
PST150-17-S-016	harness	1
PST150-17-S-017	ignition coil	1
PST150-17-S-018	regulater	1
PST150-17-S-019	horn	1
PST150-17-S-020	switch	1
PST150-17-S-021	Starter relay	1
PST150-17-S-022	flasher	1
PST150-17-S-023	ignition	1



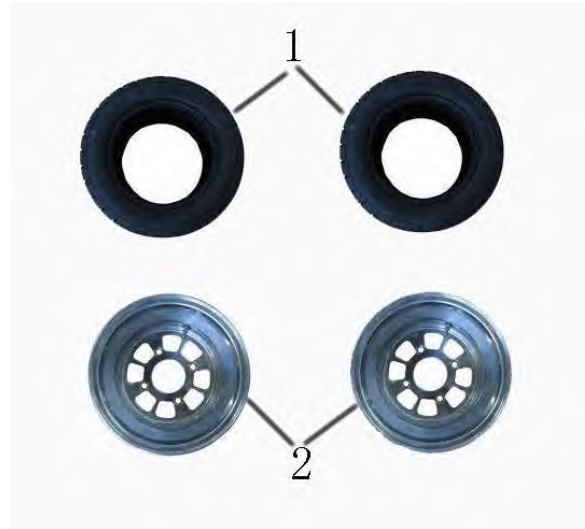
Parts No.	Description	Qty per Vehicel
PST150-17-T-001	rear swing	1
PST150-17-T-002	rear shock	2
PST150-17-T-003	Engine axle	1

PST150-17-T-004	Engine supporting pipe	1
PST150-17-T-005	chain adjuster	2



Parts No.	Description	Qty per Vehicel
PST150-17-U-001	differential gear	1
PST150-17-U-002	rear fender bracket LH	1
PST150-17-U-003	rear fender bracket RH	1
PST150-17-U-004	rear fender bracket upper	2
PST150-17-U-005	rear disc brake	1
PST150-17-U-006	Master cylinder	1
PST150-17-U-007	brake lever	1
PST150-17-U-008	Brake Line	1
PST150-17-U-009	Brake Caliper	1
PST150-17-U-010	Brake Pad	2

PST150-17-U-011	plate	1
-----------------	-------	---



Parts No.	Description	Qty per Vehicel
PST150-17-V-001	rear tire	2
PST150-17-V-002	rear wheel	2





Parts No.	Description	Qty per Vehicel
PST150-17-W-001	battery	1
PST150-17-W-002	electrolyte	1
PST150-17-W-003	parts for istallation	1



Parts No.	Description	Qty per Vehicel
PST150-17-X-001	REAR FENDER	2





Parts No.	Description	Qty per Vehicel
PST150-17-Y-001	WINDSHIELD	1



Parts No.	Description	Qty per Vehicel
PST150-17-Z-001	trunk	1
PST150-17-Z-002	trunk holder	1